

## Grace Core Series



GRC-50B (Self-Propelled)  
GRC-60B (Attendant-Propelled)



## Designed to Fit Smaller Users Grace Core Minimum Module



\* May not be JIS compatible with optional parts installed.

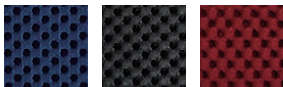


GRC-50B (Self-Propelled)



GRC-60B (Attendant-Propelled)

### Seat Upholstery Colors



M-12 M-13 M-14

Cushion Thickness



### Grace Core a modular wheelchair low-seat Self-Propelled

[Folded]  
(Front Seat Height 370)

Front Seat Height 350 mm / 370 mm / (390 mm)\*2 \* Seat cushion not included.

**GRC-50B** Manufacturer's Suggested Retail Price (Non-Taxable) **¥215,380**



### Grace Core a modular wheelchair low-seat Attendant-Propelled

[Folded]  
(Front Seat Height 370)

Front Seat Height 350 mm / 370 mm / (390 mm)\*2 \* Seat cushion not included.

**GRC-60B** Manufacturer's Suggested Retail Price (Non-Taxable) **¥215,380**



### Grace Core a modular wheelchair low-seat Attendant-Propelled with Duralock Design(Foot Brakes)

Front Seat Height 370 mm / (390 mm)\*2 \* Seat cushion not included.

**GRC-60BD** Manufacturer's Suggested Retail Price (Non-Taxable) **¥239,030**

\* Not applicable for JIS mark affixing.



Duralock Design  
(Foot Brakes)

Unit: mm

Product Number	Caster × Rear Wheel	*1 Front Seat Height	Rear Seat Height	Seat Width	*3 Seat Depth	Armrest Height	*4 Backrest Height	*5 Footrest Length	Total Length	Total Height	Total Width	Weight
<b>GRC-50B</b>	5×20	*2(390) 370 350	*2(375) 355 335	400 420	360(320)	235~295	560	230~290	960	900	565	16.8kg
<b>GRC-60B</b>	5×16	*2(390) 370 350	*2(365) 345 325	400 420	360(320)	235~295	560	230~290	975	890	560	16.2kg
<b>GRC-60BD</b>	5×16	*2(390) 370	*2(365) 345	400 420	360(320)	235~295	560	230~290	975	890	560	16.9kg

\*1 The front seat height is 370mm when shipped. If you wish to change the front seat height before shipment, an additional fee will be charged.

\*2 The front and rear seat height settings in parentheses ( ) are manufacturer options.

\*3 The seat depth can be set to 360mm or 320mm. (The factory setting of the seat depth is 360mm.)

\*4 The JIS standard is 515mm.

\*5 Foot length: distance between the footrests and seat.

\*6 The dimensions are based on the seat width set at 400mm.



# Features of the Grace Core - Minimo, Designed to Fit Comfortably

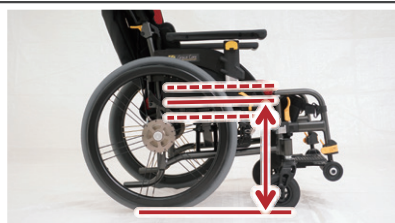
## 1 Recommended for petite users

### Seat Height Adjustment & Seat Depth Adjustment

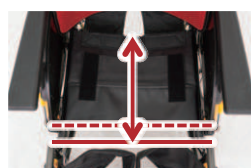
The seat height can be set to 37cm, 35cm, or (39cm\*). This allows for an easier transfer and foot propulsion, as users can adjust the seat height to comfortably reach the floor. The seat depth can be adjusted to 36cm or 32cm, making it easier for smaller users to sit with their pelvis firmly against the back of the seat. This also facilitates easier foot propulsion.

\*The 39cm front seat height is a manufacturer option.

**[Front seat height] 37/35cm(\*39cm)**



**Seat depth  
36cm↔32cm**



**[Grace Core - Multi]**

The seat depth of 38cm may cause the back of the knee to touch the seat.

**Grace Core - Adjust**

**Grace Core - Minimo**



**[Grace Core - Minimo]**

The seat depth of 36cm does not touch the back of the knees, so it is easy to sit with the pelvis in the back of the seat.

## 2 Recommended for users who transfer themselves using their feet

### Original Seat Frame Structure & Caster Structure

The folding frame of the seat is designed to prevent contact with the legs, making it easier to transfer with the feet and to stand up. Additionally, the caster housing is positioned outward, providing more space for the feet during foot propulsion.

**NEXT Core**



**Grace Core**



Position of the Folding Frame

**NEXT Core**



**Grace Core**



## 3 Recommended for Those Who Want to Use Thick Cushions

### Seat Height Adjustment & Armrest Height Adjustment

By setting the seat height so that your feet reach the floor even when using thick cushions, we eliminate anxiety during transfers. Additionally, setting the armrest height to a level that comfortably supports your arms makes it easier to sit in a stable position.

#### Armrest Height Adjustment

#### Seat Height Adjustment



GRC-51B (Self-Propelled)  
GRC-61B (Attendant-Propelled)



**Supporting posture with adjustable armrests and seat functions Grace Core Modular Type**

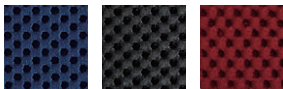


\* May not be JIS compatible with optional parts installed.



GRC-51B (Self-Propelled)

Seat Upholstery Colors



M-12

M-13

M-14

Cushion Thickness



GRC-61B (Attendant-Propelled)

Grace Core a modular wheelchair Self-Propelled

[Folded]  
(Front Seat Height 430)

Front Seat Height 410 mm / **430 mm** / (450 mm)\*2

\* Seat cushion not included.

**GRC-51B**

Manufacturer's Suggested Retail Price  
(Non-Taxable)

**¥209,330**



Grace Core a modular wheelchair Attendant-Propelled

[Folded]  
(Front Seat Height 430)

Front Seat Height 410 mm / **430 mm** / (450 mm)\*2

\* Seat cushion not included.

**GRC-61B**

Manufacturer's Suggested Retail Price  
(Non-Taxable)

**¥209,330**



Grace Core a modular wheelchair Attendant-Propelled with Duralock Design(Foot Brakes)

Front Seat Height 410 mm / **430 mm** / (450 mm)\*2

\* Seat cushion not included.

**GRC-61BD**

Manufacturer's Suggested Retail Price  
(Non-Taxable)

**¥233,530**

\* Not applicable for JIS mark affixing.



Duralock Design  
(Foot Brakes)

Unit: mm

Product Number	Caster x Rear Wheel	*1 Front Seat Height	Seat Width	*3 Seat Depth	Rear Seat Height	Armrest Height	*4 Backrest Height	*5 Footrest Length	Total Length	Total Height	*6 Total Width	Weight
<b>GRC-51B</b>	5x22	*2(450) 430 410	400/420	380(340)	*2(435) 415 395	250~310	560	290~350	950	930	565	17.1kg
<b>GRC-61B</b>	5x16	*2(450) 430 410	400/420	380(340)	*2(435) 415 395	250~310	560	290~350	950	930	560	15.8kg
<b>GRC-61BD</b>	5x16	*2(450) 430 410	400/420	380(340)	*2(435) 415 395	250~310	560	290~350	950	930	560	17.1kg

\*1 The front seat height is set to 430mm and the rear seat height to 415mm when shipped. If you wish to change the front seat height before shipment, an additional fee will be charged.

\*2 The front and rear seat height settings in parentheses ( ) are manufacturer options.

\*3 The seat depth can be set to 380mm or 340mm. (The factory default seat depth is set to 380mm.)

\*4 The JIS standard is 515mm.

\*5 Foot length: distance between the footrests and seat.

\*6 The dimensions are based on the seat width set at 400mm.



# Three New Functions of Grace Core - Adjust

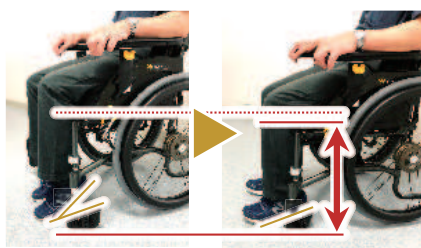
## 1 Adjusting the Seat Height

The seat height can be adjusted to 41, 43, or 45 cm. For taller users, set the seat higher; for shorter users or when using a thicker cushion, set the seat lower. This allows the seat height to be optimized for their specific situation.

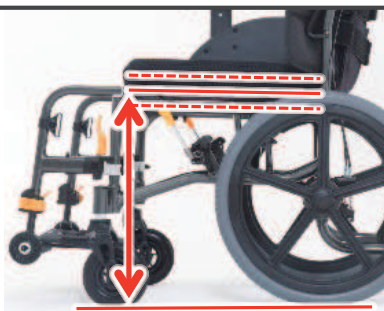
\* A front seat height of 45 cm is a manufacturer option.

### [Front Seat Height 41cm]

Set the seat lower for shorter users or when using a thicker cushion.

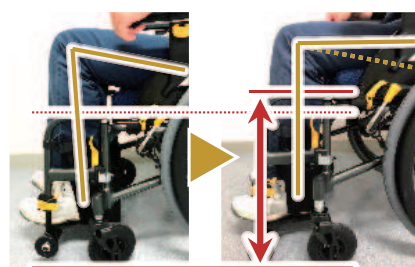


### [Front Seat Height] 41cm / 43cm / (45cm)\*



### [Front Seat Height 45cm]

Set the seat higher for taller users.



\* A manufacturer option

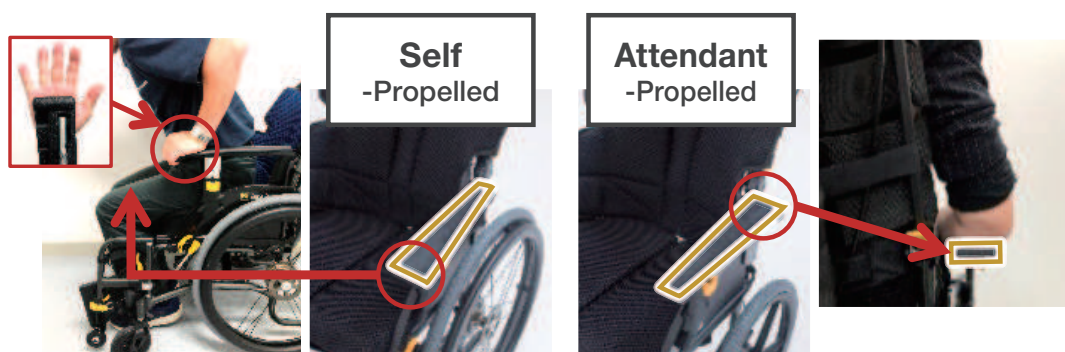
## 2 Adjusting the Armrest Height

The height of the armrests can be set to 25, 27, 29, or 31 cm in four steps. The armrest height, which may change for taller users or when using a thicker cushion, can be adjusted to the optimal height based on their situation.



## 3 2-Way Armrest

For the self-propelled model, the front part of the arm pad is wider, making it easier to support when standing up and preventing interference with arm movement during transfer. For the attendant-propelled model, the rear part of the arm pad is wider, providing better support for the arms. These arm pads are designed for safety and comfort, tailored to the situation.



GRC-31B (Self-Propelled)  
GRC-41B (Attendant-Propelled)



## The Multi-Functional Model of Our Grace Core Series with Flip-Up • Swing-In • Swing-Away Features!



\* May not be JIS compatible with optional parts installed.



GRC-31B (Self-Propelled)

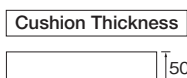


GRC-41B (Attendant-Propelled)

### Seat Upholstery Colors



M-12 M-13 M-14

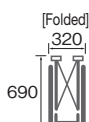


### Grace Core Multi-Functional Model • Self-Propelled

Front Seat Height **430 mm**

\* Seat cushion not included.

**GRC-31B** Manufacturer's Suggested Retail Price (Non-Taxable) **¥179,080**

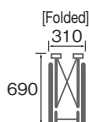


### Grace Core Multi-Functional Model • Attendant-Propelled

Front Seat Height **430 mm**

\* Seat cushion not included.

**GRC-41B** Manufacturer's Suggested Retail Price (Non-Taxable) **¥179,080**



### Grace Core Multi-Functional Model • Attendant-Propelled with Duralocks (Foot Brakes)

Front Seat Height **430 mm**

\* Seat cushion not included.

**GRC-41BD** Manufacturer's Suggested Retail Price (Non-Taxable) **¥203,280**

\* Not applicable for JIS mark affixing.



Duralock Design  
(Foot Brakes)

Unit: mm

Product Number	Caster x Rear Wheel	Front Seat Height	Seat Width	*1 Seat Depth	Rear Seat Height	Armrest Height	*2 Backrest Height	*3 Footrest Length	Total Length	Total Height	Total Width	Weight
<b>GRC-31B</b>	5x22	430	400/420	380	415	250	560	290~350	950	930	565	16.5kg
<b>GRC-41B</b>	5x16	430	400/420	380	415	250	560	290~350	950	930	560	15.1kg
<b>GRC-41BD</b>	5x16	430	400/420	380	415	250	560	290~350	950	930	560	16.1kg

\*1 The seat depth can be adjusted to 380mm or 340mm. (The factory setting of the seat depth is 380mm.)

\*2 The JIS standard is 515mm.

\*3 Foot length: distance between the footrests and seat.

©The dimensions are based on the seat width set at 400mm.



GRC-11B (Self-Propelled)  
GRC-21B (Attendant-Propelled)



The long-awaited high-grade model of our NEXT CORE Series is finally available!



\* May not be JIS compatible with optional parts installed.



GRC-11B (Self-Propelled)



GRC-21B (Attendant-Propelled)

## Seat Upholstery Colors



M-12 M-13 M-14

Cushion Thickness

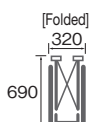


## Grace Core Standard Model • Self-Propelled

Front Seat Height **430 mm**

\* Seat cushion not included.

**GRC-11B** Manufacturer's Suggested Retail Price (Non-Taxable) **¥151,250**

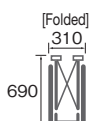


## Grace Core Standard Model • Attendant-Propelled

Front Seat Height **430 mm**

\* Seat cushion not included.

**GRC-21B** Manufacturer's Suggested Retail Price (Non-Taxable) **¥151,250**



## Grace Core Standard Model • Attendant-Propelled with Duralocks (Foot Brakes)

Front Seat Height **430 mm**

\* Seat cushion not included.

**GRC-21BD** Manufacturer's Suggested Retail Price (Non-Taxable) **¥175,450**

\* Not applicable for JIS mark affixing.



Duralock Design  
(Foot Brakes)

Unit: mm

Product Number	Caster x Rear Wheel	Front Seat Height	Seat Width	*1 Seat Depth	Rear Seat Height	Armrest Height	*2 Backrest Height	*3 Footrest Length	Total Length	Total Height	Total Width	Weight
<b>GRC-11B</b>	5x22	430	400/420	380	415	250	560	290~350	950	930	565	14.7kg
<b>GRC-21B</b>	5x16	430	400/420	380	415	250	560	290~350	950	930	560	13.5kg
<b>GRC-21BD</b>	5x16	430	400/420	380	415	250	560	290~350	950	930	560	14.4kg

\*1 The seat depth can be adjusted to 380mm or 340mm. (The factory setting of the seat depth is 380mm.)

\*2 The JIS standard is 515mm.

\*3 Foot length: distance between the footrests and seat.

©The dimensions are based on the seat width set at 400mm.

## Our Airless Hybrid Tires!

Our hybrid tires have inner tubes made of polyurethane foam with excellent shock absorbercy instead of conventional air-filled tubes. This standard feature makes pumping air into the tires unnecessary. Easy to operate, the brakes last longer to ensure user safety.

Shrink-resistant high density polyurethane foam tube



Here's a detailed video of the comprehensive standard features of Grace Core!

[What a Difference! Our Standard Wheelchair Features!](#)

## Our Easy Dry Cushion with Excellent Breathability!

The seat upholstery is made of our mesh fabric specially designed to resist pilling. The cushion is made of foam. Highly breathable and moisture-wicking, the seat is comfortable to sit in.



Specially Designed Mesh Fabric



Foam Cushion



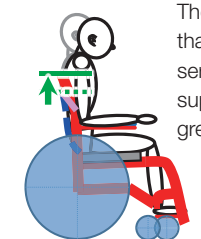
Easy dry cushion  
Weight: 0.5kg

## Our New Backrest Mechanism for Comfort Even After Hours of Sitting!

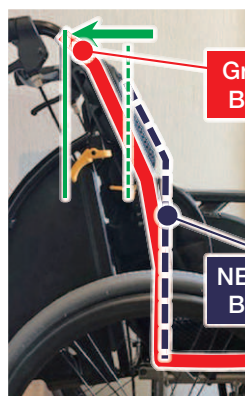
### ◆ Our Standard 56cm Backrest is the Tallest in the Industry!

Grace Core Backrest Height 56cm

NEXT CORE Backrest Height 46cm



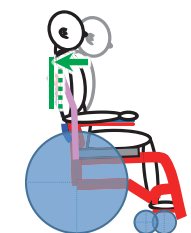
The backrest is 10 cm higher than in our NEXT CORE series. The wider backrest supports the back to offer greater head stability.



Grace Core's Back Frame

NEXT CORE's Back Frame

The backrest frame curves further towards the back than our NEXT CORE series, making it more relaxing to lean back in.

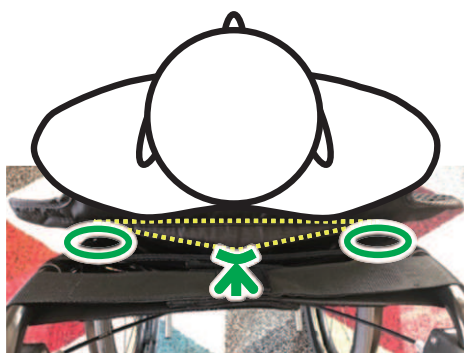


Here's a detailed video of the secrets of Grace Core backrests!

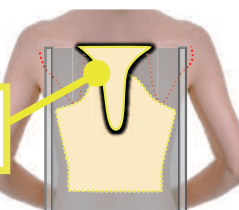
[What a Difference! The Secrets of our Backrests!](#)

### ◆ Our Backrest Upholstery with Triangular Pad for Outstanding Back Support & Maneuverability!

Gaps form around the shoulders when applying pressure to the back frame. The triangular pad attached to the upper section of the backrest cover seat supports the back, particularly the spinal column, to maintain the gap.

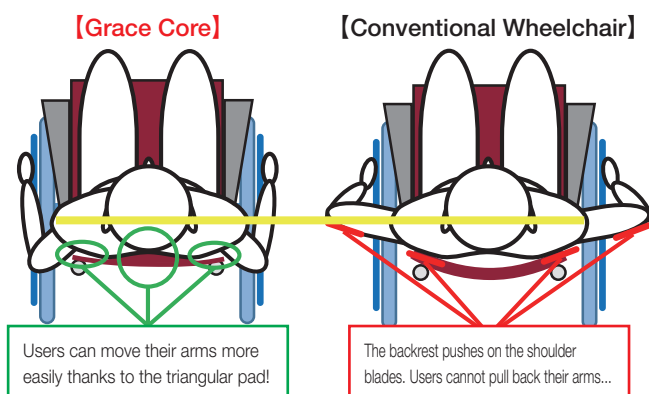


Part with Triangular Pad for Support

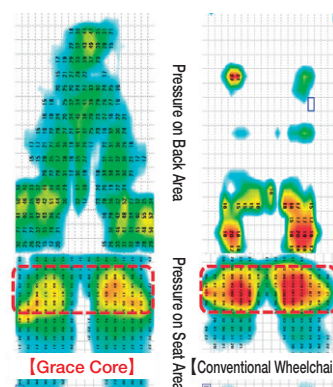


## Comfortable even after hours of sitting!

The high backrest fits the entire back for proper support. This dramatically reduces the pressure on the back and seat areas.



The backrest with triangular padding properly supports the spinal column. The backrest does not push on the shoulder blades, so users can easily move their arms!

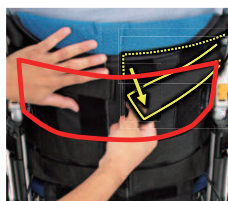




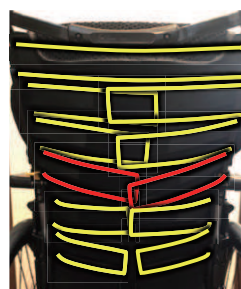
## Further Upgrades to Grace Core's Adjustable Backrest Upholstery!

### ◆ Better backrest adjustment for a better fit

In our NEXT CORE Series, there is a gap between the 2nd and 3rd belts from the top. This requires careful placement of the belts.



Backrest Belts of NEXT CORE



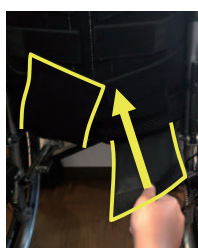
Backrest Belts of Grace Core

Backrest belts with less gaps in between and a frame which better fits the curvature of backs **makes it possible to adjust the backrest like a pro!**

## Comes newly equipped with innovative gluteal support belts!

### ◆ The gluteal support belts prevents gaps from forming

It is possible to minimize pressure on the hipbone by reducing the gap between the posterior pelvis and the seat to support the entire buttocks. This also prevents the pelvis from tilting backwards.



Pelvic support

Gluteal support

Image of gluteal support belts

Just like NEXT Core, Grace Core comes with pelvic support to prop up the pelvis from all directions. Our new feature - the gluteal support belts - similarly provides the lower pelvis further support.

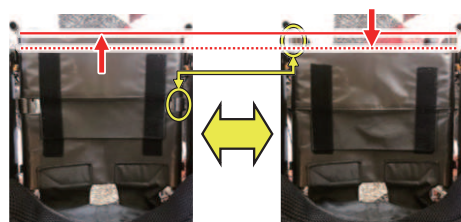


Here's a detailed video of the secrets of Grace Core backrests!

**What a Difference!**  
**Tips on Adjusting Backrests!**

## Easily Adjust the Seat Depth on the Spot!

The seat depth can be easily adjusted to 38cm or 34cm without any tools. Adjust the seat depth to a size according to the user's height and usage right on the spot.



Seat Depth 38cm

Seat Depth 34cm



Here's a detailed video of the secrets of Grace Core seats!

**What a Difference!**  
**The Secret of our Seats!**

## Our 90 Degree Footrests!

It is easy to sit in the wheelchair with the footrests positioned closer in towards the user like in a chair.



[Grace Core]



[Conventional Wheelchair]



Here's a detailed video of the secrets of Grace Core footrests!

**What a Difference!**  
**The Secret of our Footrests!**

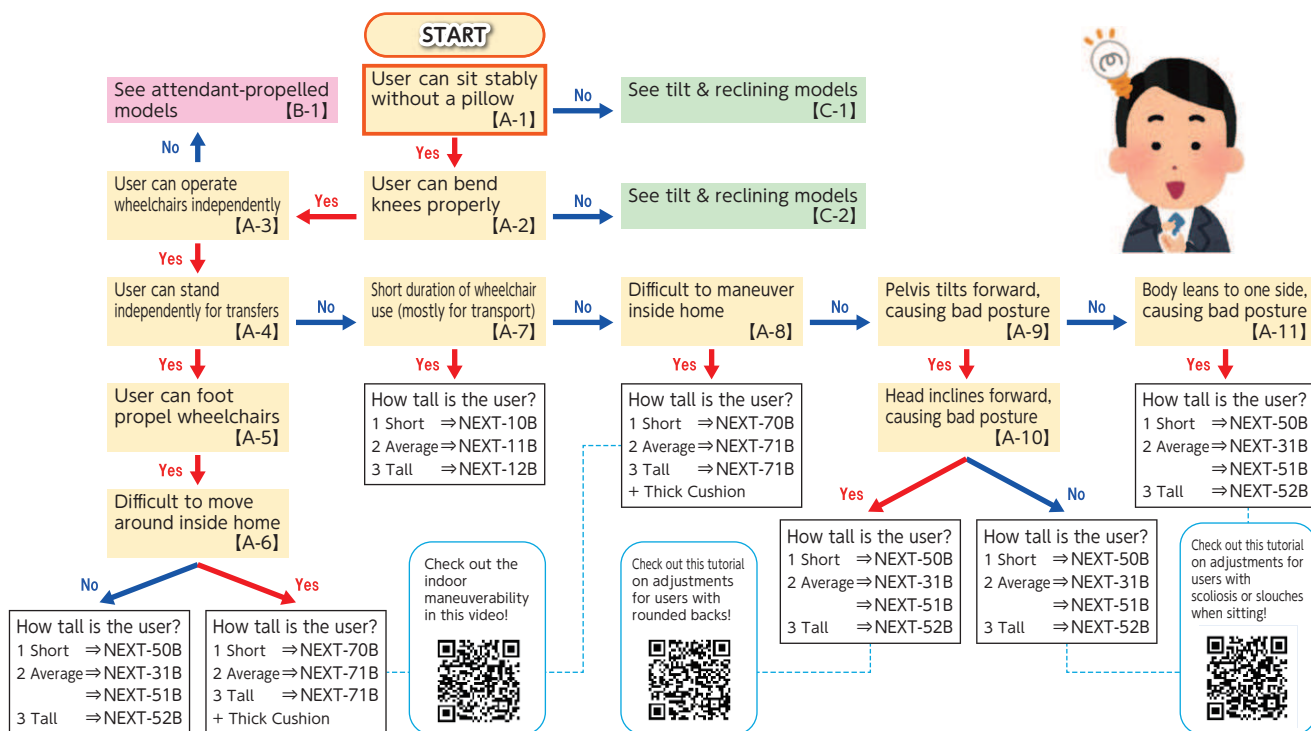
## GRC Option Chart

	Walking Cane Holder (NEXT)	Posterior IV Pole (Standard)	Oxygen Tank Holder (NEXT)	Foldable Oxygen Tank Holder (NEXT)	Anti-tip Bars (Fall Prevention) (NEXT)	Extension Bar (5cm/10cm) (Standard)	Coated Handrim
GRC-11B	●	●	●	●	●	●	●
GRC-21B	●	●	●	●	●	●	×
GRC-31B	●	●	●	●	●	●	●
GRC-41B	●	●	●	●	●	●	×
GRC-50B	●	●	●	●	●	●	●
GRC-51B	●	●	●	●	●	●	●
GRC-60B	●	●	●	●	●	●	×
GRC-61B	●	●	●	●	●	●	×
GRC-21BD	×	×	×	×	×	●	×
GRC-41BD	×	×	×	×	×	●	×
GRC-61BD	×	×	×	×	×	●	×

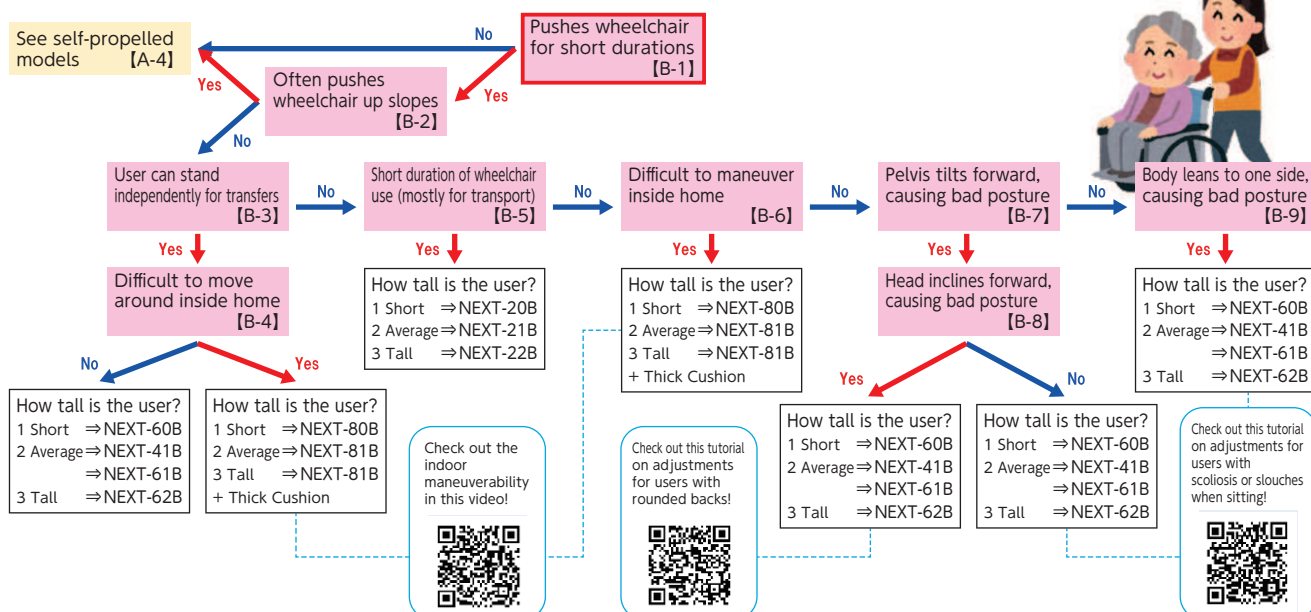
\* Further discussion needed when combining several options

# Matsunaga's Guide to Choosing a Wheelchair

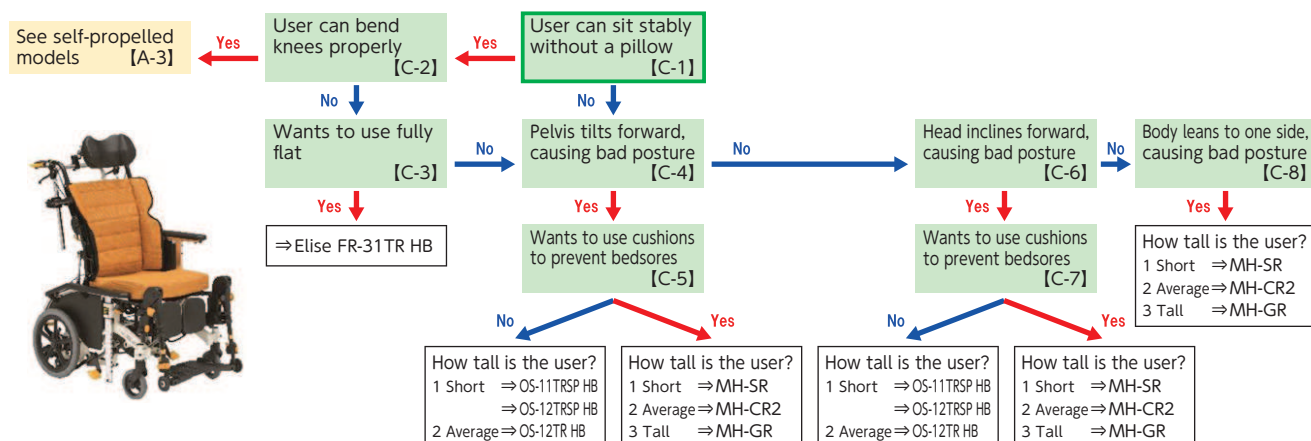
## A — Standard Model! Self-Propelled NEXT CORE Series



## B — Standard Model! Attendant-Propelled NEXT CORE Series



## C — Tilt & Reclining Model! OASIS Series & My Tilt 3D Series





## NEXT CORE Series



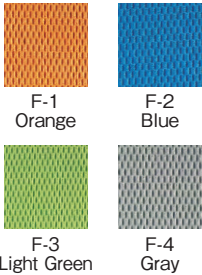
NEXT-51B HB/51B (Self-Propelled)  
NEXT-61B HB/61B (Attendant-Propelled)



## A modular wheelchair supporting good posture with adjustable armrests • seat • footrests

Load  
Capacity  
100kg

### Seat Upholstery Colors



Polyester



NEXT-51B (Self-Propelled)

### Height Adjustable Armrest



Convenient for use with  
commercially sold cushions!  
\* 25cm~31cm

### Position & Angle Adjustable Footrests



Adjust to fit the user's  
height and physical  
condition!

### Hybrid Tire Design (Puncture-Proof Tires)

**Self-Propelled** Front Seat Height 410 mm / 430 mm / 450 mm \* Seat cushion not included. (Folded) (Front Seat Height 430) 280 675 Weight 15.2kg  
Caster x Rear Wheel [Inches] 6 × 22 (22 × 1 1/4)  
NEXT-51B HB Manufacturer's Suggested Retail Price (Non-Taxable) ¥196,020

**Attendant-Propelled** Front Seat Height 410 mm / 430 mm / 450 mm \* Seat cushion not included. (Folded) (Front Seat Height 430) 280 675 Weight 14.2kg  
Caster x Rear Wheel [Inches] 6 × 16 (16 × 1 3/8)  
NEXT-61B HB Manufacturer's Suggested Retail Price (Non-Taxable) ¥196,020

### Duralock Design (Foot Brakes)

**Attendant-Propelled** Front Seat Height 410 mm / 430 mm / 450 mm \* Seat cushion not included. (Folded) (Front Seat Height 430) 280 675 Weight 15.5kg  
Caster x Rear Wheel [Inches] 6 × 16 (16 × 1 3/8)  
NEXT-61B HBD Manufacturer's Suggested Retail Price (Non-Taxable) ¥220,220

### Height Adjustable Seat



Adjust to fit the user!  
\* Front Seat Height  
41cm/43cm/45cm

### Air Tire Design

**Self-Propelled** Front Seat Height 410 mm / 430 mm / 450 mm \* Seat cushion not included. (Folded) (Front Seat Height 430) 280 675 Weight 14.6kg  
Caster x Rear Wheel [Inches] 6 × 22 (22 × 1 1/4)  
NEXT-51 B Manufacturer's Suggested Retail Price (Non-Taxable) ¥188,760

**Attendant-Propelled** Front Seat Height 410 mm / 430 mm / 450 mm \* Seat cushion not included. (Folded) (Front Seat Height 430) 280 675 Weight 13.6kg  
Caster x Rear Wheel [Inches] 6 × 16 (16 × 1 3/8)  
NEXT-61 B Manufacturer's Suggested Retail Price (Non-Taxable) ¥188,760



\* May not be JIS compatible with optional parts installed.

NEXT-61B  
(Attendant-Propelled)



Unit: mm

Product Number	Front Seat Height	Seat Width	Seat Depth	Rear Seat Height	Armrest Height	Backrest Height	Footrest Length	Total Height	Total Length	Total Width
NEXT-51B HB	410/430/450	380/400/420	380	380/400/420	250~310	460	325~415	880/900/920	960	560
NEXT-51B										
NEXT-61B HB	410/430/450	380/400/420	380	380/400/420	250~310	460	325~415	880/900/920	955	550
NEXT-61B HBD										560
NEXT-61B	410/430/450	380/400/420	380	380/400/420	250~310	460	325~415	880/900/920	955	550
NEXT-61B										550

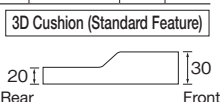
\* Footrest length: distance between the footrests and seat

\* The factory setting of the front seat height is 430mm.

\* Additional fees are required for adjustments to the front seat to floor height before shipping.

© Specifications are subject to change without prior notice for continual product improvement.

© The dimensions are based on the seat width set at 400mm.





NEXT-50B HB/50B (Self-Propelled)  
NEXT-60B HB/60B (Attendant-Propelled)



## An extra-low to low-seat adjustable modular wheelchair for use with cushions and foot propelling

Load Capacity  
100kg

NEXT CORE  
Series  
NEXT CORE - Minimo

### Height Adjustable Armrest



Convenient for use with commercially sold cushions!  
\* 22.5cm~28.5cm

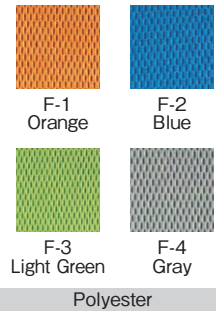
### Height Adjustable Seat



Adjust to fit the user!  
\* Front Seat Height 39cm/37cm/35cm

### NEXT-50B (Self-Propelled)

### Seat Upholstery Colors



Polyester

### Position & Angle Adjustable Footrests



Adjust to fit the user's height and physical condition!

### Hybrid Tire Design (Puncture-Proof Tires)

\* Changed to 5-inch casters.

Self-Propelled

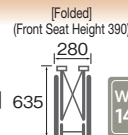
Front Seat Height **390 mm / 370 mm / \*350 mm**

\* Seat cushion not included.

NEXT-50B HB

Manufacturer's Suggested Retail Price (Non-Taxable) **¥202,070**

Caster x Rear Wheel [Inches] **6 × 20 (20 × 11/4)**



Weight **14.9kg**



Attendant-Propelled

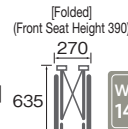
Front Seat Height **390 mm / 370 mm / \*350 mm**

\* Seat cushion not included.

NEXT-60B HB

Manufacturer's Suggested Retail Price (Non-Taxable) **¥202,070**

Caster x Rear Wheel [Inches] **6 × 16 (16 × 13/8)**



Weight **14.2kg**

### Air Tire Design

\* Changed to 5-inch casters.

Self-Propelled

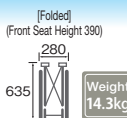
Front Seat Height **390 mm / 370 mm / \*350 mm**

\* Seat cushion not included.

NEXT-50B

Manufacturer's Suggested Retail Price (Non-Taxable) **¥194,810**

Caster x Rear Wheel [Inches] **6 × 20 (20 × 11/4)**



Weight **14.3kg**



\* May not be JIS compatible with optional parts installed.

Attendant-Propelled

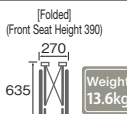
Front Seat Height **390 mm / 370 mm / \*350 mm**

\* Seat cushion not included.

NEXT-60B

Manufacturer's Suggested Retail Price (Non-Taxable) **¥194,810**

Caster x Rear Wheel [Inches] **6 × 16 (16 × 13/8)**



Weight **13.6kg**



NEXT-60B  
(Attendant-Propelled)

### Chart of Wheelchair Sizes (NEXT-50B • 60B (Self-Propelled)(Attendant-Propelled))

	Front Seat Height	Caster Size	Wheel Size
Self-Propelled	390	6-inches	20×11/4
	370	6-inches	20×11/4
	350	5-inches	20×11/4
Attendant-Propelled	390	6-inches	16×13/8
	370	6-inches	16×13/8
	350	5-inches	16×13/8

\* The 5-inch casters are solid cushioned casters.

Unit: mm

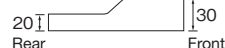
Product Number	Front Seat Height	Seat Width	Seat Depth	Rear Seat Height	Armrest Height	Backrest Height	Footrest Length	Total Height	Total Length	Total Width
NEXT-50B HB	390/370/350	400	360	365 / 345 / 325	225~285	460	285~375	880 / 860 / 840	940	560
NEXT-50B								*Changed to 5-inch casters.		
NEXT-60B HB								880 / 860 / *840		
NEXT-60B	390/370/350	400	360	365 / 345 / 325	225~285	460	285~375	*Changed to 5-inch casters.	940	550

\* Footrest length: distance between the footrests and seat

\* The factory setting of the front seat height is 390mm.

© Specifications are subject to change without prior notice for continual product improvement.

3D Cushion (Standard Feature)



# NEXT CORE - Wide

## NEXT CORE - Wide



## A New Wide Model of Our NEXT CORE Series Available Now for Larger Users!

Load  
Capacity  
130kg



**46cm Seat Width!**  
Comfortable even  
for Larger Users!

### Hybrid Tire Design (Puncture-Proof Tires)



Self-Propelled

Front Seat Height **470 mm / 450 mm**

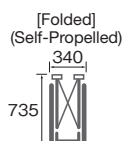
\* Seat cushion not included.

**NEXT-52B HB**

Manufacturer's Suggested  
Retail Price (Non-Taxable)

**¥208,120**

Caster x Rear Wheel [Inches]  
**6 × 24 (24 × 1 1/4)**



Attendant-Propelled

Front Seat Height **470 mm / 450 mm**

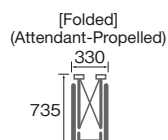
\* Seat cushion not included.

**NEXT-62B HB**

Manufacturer's Suggested  
Retail Price (Non-Taxable)

**¥208,120**

Caster x Rear Wheel [Inches]  
**6 × 16 (16 × 1 3/8)**



### Seat Upholstery Colors



F-1  
Orange



F-2  
Blue



F-3  
Light Green



F-4  
Gray

Unit: mm

Product Number	Seat Width	Seat Depth	Rear Seat Height	Armrest Height	Backrest Height	Footrest Length	Total Height	Total Length	Total Width	Weight
<b>NEXT-52B HB</b>	460	400	420/440	250~310	480	365~455	960	1010	620	16.6kg
<b>NEXT-62B HB</b>	460	400	420/440	250~310	480	365~455	960	985	600	15.6kg

\* The factory setting of the front seat height is 470mm.

\* Additional fees are required for adjustments to the front seat height before shipping.

**3D Cushion**  
(Standard Feature)



### Wonderful Features of NEXT CORE - Wide!

#### Position & Angle Adjustable Footrest Structure



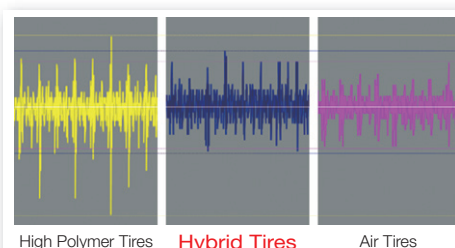
The position and angle of the footrests are adjustable. Users can sit with their feet closer in towards themselves, or adjust the angle to find a position better for their joints.

#### Height Adjustable Armrest Structure



The armrest is adjustable according to the user's physical condition and the thickness of the cushion used. The armrest height is 4-level adjustable: 25 • 27 • 29 • 31 cm.

#### Puncture-Proof Tires with Excellent Shock Absorption



Our tires are more shock absorbant than conventional puncture-proof tires (high polymer tires). Hybrid tires are puncture-proof tires with the comfort level of air tires.



NEXT-31B HB/31B (Self-Propelled)  
NEXT-41B HB/41B (Attendant-Propelled)



## Flip-Up Armrests and Swing In-and-Away Footrests for Safer, Easier Transfers

Load Capacity  
100kg

Curved Back Frame & Adjustable Backrest (Standard Feature in NEXT CORE Series)



The back frame largely curves towards the back to optimize seat comfort and ease of use.



NEXT-31B (Self-Propelled)

### Seat Upholstery Colors



F-1 Orange



F-2 Blue



F-3 Light Green



F-4 Gray

Polyester

### Swing In-and-Away



Can be swung straight up and even detached!

### Hybrid Tire Design (Puncture-Proof Tires)

Self-Propelled

Front Seat Height **430 mm**

\* Seat cushion not included.

NEXT-31B HB

Manufacturer's Suggested Retail Price (Non-Taxable) **¥171,820**

Caster x Rear Wheel [Inches] **6 × 22 (22 × 1 1/4)**



Weight **13.8kg**

Attendant-Propelled

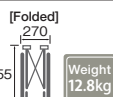
Front Seat Height **430 mm**

\* Seat cushion not included.

NEXT-41B HB

Manufacturer's Suggested Retail Price (Non-Taxable) **¥171,820**

Caster x Rear Wheel [Inches] **6 × 16 (16 × 13/8)**



Weight **12.8kg**

### Duralock Design (Foot Brakes)

Attendant-Propelled

Front Seat Height **430 mm**

\* Seat cushion not included.

NEXT-41B HBD

Manufacturer's Suggested Retail Price (Non-Taxable) **¥196,020**

Caster x Rear Wheel [Inches] **6 × 16 (16 × 13/8)**



Weight **14.1kg**

### Air Tire Design

Self-Propelled

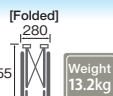
Front Seat Height **430 mm**

\* Seat cushion not included.

NEXT-31B

Manufacturer's Suggested Retail Price (Non-Taxable) **¥164,560**

Caster x Rear Wheel [Inches] **6 × 22 (22 × 1 1/4)**



Weight **13.2kg**

Attendant-Propelled

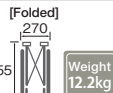
Front Seat Height **430 mm**

\* Seat cushion not included.

NEXT-41B

Manufacturer's Suggested Retail Price (Non-Taxable) **¥164,560**

Caster x Rear Wheel [Inches] **6 × 16 (16 × 13/8)**



Weight **12.2kg**



\* May not be JIS compatible with optional parts installed.



NEXT-41B

(Attendant-Propelled)

Unit: mm

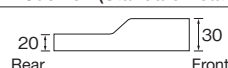
Product Number	Front Seat Height	Seat Width	Seat Depth	Rear Seat Height	Armrest Height	Backrest Height	Footrest Length	Total Height	Total Length	Total Width
NEXT-31B HB	430	380/400/420	380	400	235	440	320~410	880	950	560
NEXT-31B										550
NEXT-41B HB	430	380/400/420	380	400	235	440	320~410	880	945	560
NEXT-41B HBD										550
NEXT-41B										550

\* Footrest length: distance between the footrests and seat

○ Specifications are subject to change without prior notice for continual product improvement.

○ The dimensions are based on the seat width set at 400mm.

### 3D Cushion (Standard Feature)

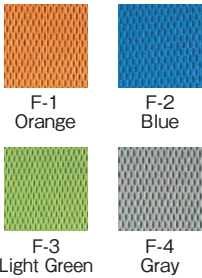


NEXT-11B HB/11B (Self-Propelled)  
NEXT-21B HB/21B (Attendant-Propelled)



## A Standard Model of NEXT CORE Series Both User-Friendly and Functional

### Seat Upholstery Colors



Polyester

### Newly Designed Wheels & Push Rings



The wheels are easier to maintain thanks to the fewer number of spokes. The newly designed hand rim is the result of painstaking effort for a much easier grip.

### Curved Back Frame & Adjustable Backrest (Standard Feature in NEXT CORE Series)



The back frame largely curves towards the back to optimize seat comfort and ease of use.

### Adjustable Footrests

The wheelchair features newly designed footrests adjustable without the use of any tools.



### Hybrid Tire Design (Puncture-Proof Tires)

Self-Propelled	Front Seat Height 430 mm	* Seat cushion not included.
NEXT-11B HB	Manufacturer's Suggested Retail Price (Non-Taxable) ¥140,360	655 [Folded] 290 Caster x Rear Wheel (Inches) 6×22 (22×1 1/4) Weight 12.4kg

Attendant-Propelled	Front Seat Height 430 mm	* Seat cushion not included.
NEXT-21B HB	Manufacturer's Suggested Retail Price (Non-Taxable) ¥140,360	655 [Folded] 280 Caster x Rear Wheel (Inches) 6×16 (16×1 3/8) Weight 11.4kg

### Duralock Design (Foot Brakes)

Attendant-Propelled	Front Seat Height 430 mm	* Seat cushion not included.
NEXT-21B HBD	Manufacturer's Suggested Retail Price (Non-Taxable) ¥164,560	655 [Folded] 280 Caster x Rear Wheel (Inches) 6×16 (16×1 3/8) Weight 12.7kg

### Air Tire Design

Self-Propelled	Front Seat Height 430 mm	* Seat cushion not included.
NEXT-11B	Manufacturer's Suggested Retail Price (Non-Taxable) ¥133,100	655 [Folded] 290 Caster x Rear Wheel (Inches) 6×22 (22×1 1/4) Weight 11.8kg

Attendant-Propelled	Front Seat Height 430 mm	* Seat cushion not included.
NEXT-21B	Manufacturer's Suggested Retail Price (Non-Taxable) ¥133,100	655 [Folded] 280 Caster x Rear Wheel (Inches) 6×16 (16×1 3/8) Weight 10.8kg



\* May not be JIS compatible with optional parts installed.

### Slim & Lightweight

With a total width size of 550 mm, the wheelchair weight only 11.8kg\*.

We upgraded its parts and the shape of its frame to achieve a highly practical wheelchair.

\* For NEXT-11B (Self-Propelled) with a seat width of 400mm

### NEXT-21B (Attendant-Propelled)



Unit: mm

Product Number	Front Seat Height	Seat Width	Seat Depth	Rear Seat Height	Armrest Height	Backrest Height	Footrest Length	Total Height	Total Length	Total Width
NEXT-11B HB	430	380/400/420	380	400	235	440	320~410	880	935	550
NEXT-11B										540
NEXT-21B HB	430	380/400/420	380	400	235	440	320~410	880	935	550
NEXT-21B HBD										540
NEXT-21B										540

\* Footrest length: distance between the footrests and seat

© Specifications are subject to change without prior notice for continual product improvement.

© The dimensions are based on the seat width set at 400mm.



NEXT-12B (Self-Propelled) • NEXT-22B (Attendant-Propelled)



Load Capacity  
100kg



NEXT-12B (Self-Propelled)

**A High-Seat Standard Wheelchair with Quality Seating Comfort for Larger Users**

**Hybrid Tire Design (Puncture-Proof Tires)**

Self-Propelled

Front Seat Height **470 mm**

\* Seat cushion not included.

NEXT-12B HB Manufacturer's Suggested Retail Price (Non-Taxable) **¥165,770**

Caster x Rear Wheel [Inches] **6 × 24 (24 × 11/4)**



Weight **13.4kg**

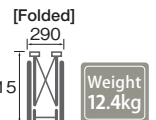
Attendant-Propelled

Front Seat Height **470 mm**

\* Seat cushion not included.

NEXT-22B HB Manufacturer's Suggested Retail Price (Non-Taxable) **¥165,770**

Caster x Rear Wheel [Inches] **6 × 16 (16 × 13/8)**



Weight **12.4kg**

**Air Tire Design**

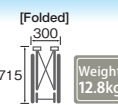
Self-Propelled

Front Seat Height **470 mm**

\* Seat cushion not included.

NEXT-12B Manufacturer's Suggested Retail Price (Non-Taxable) **¥158,510**

Caster x Rear Wheel [Inches] **6 × 24 (24 × 11/4)**



Weight **12.8kg**

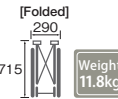
Attendant-Propelled

Front Seat Height **470 mm**

\* Seat cushion not included.

NEXT-22B Manufacturer's Suggested Retail Price (Non-Taxable) **¥158,510**

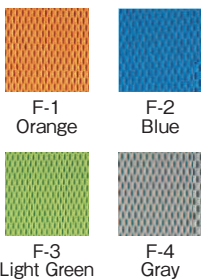
Caster x Rear Wheel [Inches] **6 × 16 (16 × 13/8)**



Weight **11.8kg**



**Seat Upholstery Colors**



NEXT-22B (Attendant-Propelled)

Polyester

**Option**



**Hybrid Tires**

This option makes pumping air into the tires unnecessary. These puncture-proof airless tires are practically as shock absorbent as air tires. The inner tubes are highly durable with a service life of about 5 years (excluding tire wear).

\* The added weight is about 0.6kg.

\* Footrest length: distance between the footrests and seat

© Specifications are subject to change without prior notice for continual product improvement.

Unit: mm

Product Number	Front Seat Height	Seat Width	Seat Depth	Rear Seat Height	Armrest Height	Backrest Height	Footrest Length	Total Height	Total Length	Total Width
NEXT-12B HB	470	420	400	445	250	460	350~440	940	965	570
NEXT-12B										
NEXT-22B HB										
NEXT-22B	470	420	400	445	250	460	350~440	940	940	560

NEXT-10B (Self-Propelled) • NEXT-20B (Attendant-Propelled)



Load Capacity  
100kg



NEXT-10B (Self-Propelled)

**A Low-Seat Standard Wheelchair with Shallow Seat Depth for Shorter Users**

**Hybrid Tire Design (Puncture-Proof Tires)**

Self-Propelled

Front Seat Height **390 mm**

\* Seat cushion not included.

NEXT-10B HB Manufacturer's Suggested Retail Price (Non-Taxable) **¥165,770**

Caster x Rear Wheel [Inches] **6 × 20 (20 × 11/4)**



Weight **12.4kg**

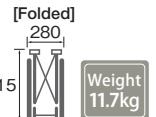
Attendant-Propelled

Front Seat Height **390 mm**

\* Seat cushion not included.

NEXT-20B HB Manufacturer's Suggested Retail Price (Non-Taxable) **¥165,770**

Caster x Rear Wheel [Inches] **6 × 16 (16 × 13/8)**



Weight **11.7kg**

**Air Tire Design**

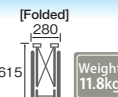
Self-Propelled

Front Seat Height **390 mm**

\* Seat cushion not included.

NEXT-10B Manufacturer's Suggested Retail Price (Non-Taxable) **¥158,510**

Caster x Rear Wheel [Inches] **6 × 20 (20 × 11/4)**



Weight **11.8kg**

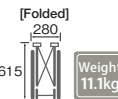
Attendant-Propelled

Front Seat Height **390 mm**

\* Seat cushion not included.

NEXT-20B Manufacturer's Suggested Retail Price (Non-Taxable) **¥158,510**

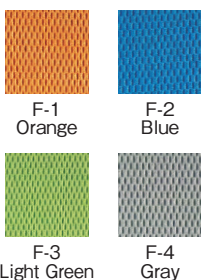
Caster x Rear Wheel [Inches] **6 × 16 (16 × 13/8)**



Weight **11.1kg**



**Seat Upholstery Colors**



NEXT-20B (Attendant-Propelled)

Polyester

**Option**



**Hybrid Tires**

This option makes pumping air into the tires unnecessary. These puncture-proof airless tires are practically as shock absorbent as air tires. The inner tubes are highly durable with a service life of about 5 years (excluding tire wear).

\* The added weight is about 0.6kg.

\* Footrest length: distance between the footrests and seat

© Specifications are subject to change without prior notice for continual product improvement.

Unit: mm

Product Number	Front Seat Height	Seat Width	Seat Depth	Rear Seat Height	Armrest Height	Backrest Height	Footrest Length	Total Height	Total Length	Total Width
NEXT-10B HB	390	400	360	365	235	440	325~370	860	925	550
NEXT-10B										
NEXT-20B HB										
NEXT-20B	390	400	360	365	235	440	325~370	860	925	540

# NEXT CORE - Spin [Mid-Seat][Low-Seat]



NEXT-71B (Self-Propelled)•NEXT-81B (Attendant-Propelled)  
NEXT-70B (Self-Propelled)•NEXT-80B (Attendant-Propelled)



Watch a Video of the Features

## An Incredibly Tight-Turning Wheelchair (Total Length 83cm\*)!! Spins in Place in Hallways Only 90cm Wide!!

\* When in Compact Mode

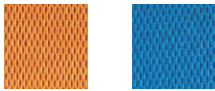
NEXT-70B (Self-Propelled)

Compact Mode

NEXT-80B (Attendant-Propelled)

Wheelie Mode

Seat Upholstery Colors



F-1 Orange

F-2 Blue



F-3 Light Green

F-4 Gray

Polyester

3D Cushion (Standard Feature)



NEXT-81B (Attendant-Propelled)

NEXT-71B (Self-Propelled)

Disk-Shaped Bumper  
2-Way Storage Footrests

### Hybrid Tire Design (Puncture-Proof Tires)

[Mid-Seat]

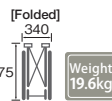
Self-Propelled

Front Seat Height 430 mm

\* Seat cushion not included.

NEXT-71B HB Manufacturer's Suggested Retail Price (Non-Taxable) ¥205,700

Caster x Rear Wheel [Inches] 4 × 22 (22 × 1 1/4) × 4



[Low-Seat]

Self-Propelled

Front Seat Height 405 mm

\* Seat cushion not included.

NEXT-70B HB Manufacturer's Suggested Retail Price (Non-Taxable) ¥205,700

Caster x Rear Wheel [Inches] 4 × 20 (20 × 1 1/4) × 4



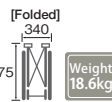
Attendant-Propelled

Front Seat Height 430 mm

\* Seat cushion not included.

NEXT-81B HB Manufacturer's Suggested Retail Price (Non-Taxable) ¥205,700

Caster x Rear Wheel [Inches] 4 × 16 (16 × 1 3/8) × 4



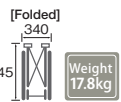
Attendant-Propelled

Front Seat Height 400 mm

\* Seat cushion not included.

NEXT-80B HB Manufacturer's Suggested Retail Price (Non-Taxable) ¥205,700

Caster x Rear Wheel [Inches] 4 × 12 (12 × 1 3/8) × 4



### Air Tire Design

[Mid-Seat]

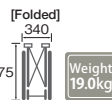
Self-Propelled

Front Seat Height 430 mm

\* Seat cushion not included.

NEXT-71B Manufacturer's Suggested Retail Price (Non-Taxable) ¥198,440

Caster x Rear Wheel [Inches] 4 × 22 (22 × 1 1/4) × 4



[Low-Seat]

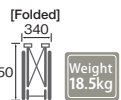
Self-Propelled

Front Seat Height 405 mm

\* Seat cushion not included.

NEXT-70B Manufacturer's Suggested Retail Price (Non-Taxable) ¥198,440

Caster x Rear Wheel [Inches] 4 × 20 (20 × 1 1/4) × 4



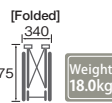
Attendant-Propelled

Front Seat Height 430 mm

\* Seat cushion not included.

NEXT-81B Manufacturer's Suggested Retail Price (Non-Taxable) ¥198,440

Caster x Rear Wheel [Inches] 4 × 16 (16 × 1 3/8) × 4



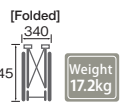
Attendant-Propelled

Front Seat Height 400 mm

\* Seat cushion not included.

NEXT-80B Manufacturer's Suggested Retail Price (Non-Taxable) ¥198,440

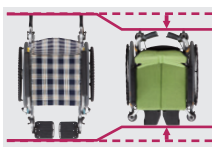
Caster x Rear Wheel [Inches] 4 × 12 (12 × 1 3/8) × 4



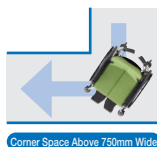
Product Number	Front Seat Height	Seat Width	Seat Depth	Rear Seat Height	Armrest Height	Backrest Height	Footrest Length	Total Height	Total Length	Total Width
NEXT-71B HB	430	400	360	405	225~285	460	295~370	975	860	580
NEXT-71B										
NEXT-81B HB	430	400	360	405	225~285	460	295~370	975	860	580
NEXT-81B										
NEXT-70B HB	405	400	360	380	225~285	460	295~340	950	860	580
NEXT-70B										
NEXT-80B HB	400	400	360	375	225~285	460	295~340	945	860	580
NEXT-80B										

© Specifications are subject to change without prior notice for continual product improvement.  
© Alterations or custom orders are unavailable for this model.

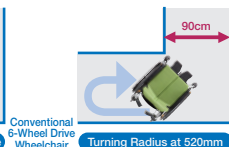
Lead a More Active Life with NEXT CORE - Spin



Up to 15cm More Compact!



Corner Space Above 650mm Wide!



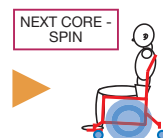
Turning Radius at 450mm!



The footrests are about 12cm closer in towards the user than a conventional wheelchair to prevent the risk of buttocks sliding forward when putting the user's feet up onto the footrests. It is easier to keep the pelvis untitled, and to find a good position for eating or being active.



Conventional Wheelchair



NEXT CORE - SPIN



## Choosing NEXT CORE Based on Height

### Users About 150cm Tall

Low-Seat Standard Wheelchair

**NEXT CORE - Petit**



**NEXT-10B NEXT-20B**

Manufacturer's Suggested Retail Price

**¥158,510** (Non-Taxable)

Front Seat Height[mm]	Front Seat Height[mm]
390	390
Seat Depth[mm]	Seat Depth[mm]
360	360
Total Width[mm]	Total Width[mm]
550	540
Weight[kg]	Weight[kg]
11.8	11.1

### Users About 160cm Tall

Standard Wheelchair

**NEXT CORE**



**NEXT-11B NEXT-21B**

Manufacturer's Suggested Retail Price

**¥133,100** (Non-Taxable)

Front Seat Height[mm]	Front Seat Height[mm]
430	430
Seat Depth[mm]	Seat Depth[mm]
380	380
Total Width[mm]	Total Width[mm]
550	540
Weight[kg]	Weight[kg]
11.8	10.8

### Users About 170cm Tall

High-Seat Standard Wheelchair

**NEXT CORE - Grand**



**NEXT-12B NEXT-22B**

Manufacturer's Suggested Retail Price

**¥158,510** (Non-Taxable)

Front Seat Height[mm]	Front Seat Height[mm]
470	470
Seat Depth[mm]	Seat Depth[mm]
400	400
Total Width[mm]	Total Width[mm]
570	560
Weight[kg]	Weight[kg]
12.8	11.8

## Choosing NEXT CORE Based on Height (Rough Estimate) & Features

	Low	LOW	Functionality	HIGH	High
Height	High	<b>NEXT CORE - Grand</b>  About 170cm Tall		<b>NEXT CORE - Wide</b>  170cm~	
	MID	<b>NEXT CORE</b>  About 160cm Tall <small>GOOD DESIGN AWARD 2013</small>	<b>NEXT CORE - Multi-Functional</b>  About 160cm Tall <small>GOOD DESIGN AWARD 2014</small>	<b>NEXT CORE - Adjust</b>  About 165cm Tall <small>GOOD DESIGN AWARD 2014</small>	
	Low	<b>NEXT CORE - Petit</b>  About 150cm Tall		<b>NEXT CORE - Minimo</b>  140~150cm	

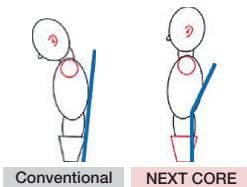
# 3 Tips for Sitting Stability on NEXT CORE

Independence Begins with a Stable Posture.



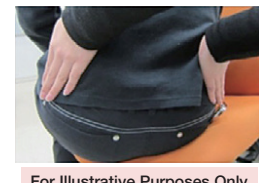
## A Frame That Doesn't Touch the Shoulders! Our Backward Curving Backrest Frame

The backrest frame curves largely backwards to prevent the frame from coming into contact with the user's shoulders. Combining this with backrest adjustment features allows even those with rounded backs to sit as far back into their seats as possible while keeping their backs straight.



## Supported from Both Sides! Pelvic & Core Stability

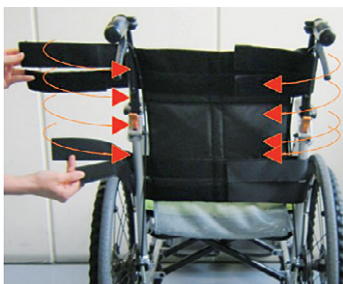
The gap between the user and the wheelchair is considerably reduced by the frame and seat. The added lateral support along with the backrest and seat stabilizes the posture of users who tend to lean towards one side.



For Illustrative Purposes Only

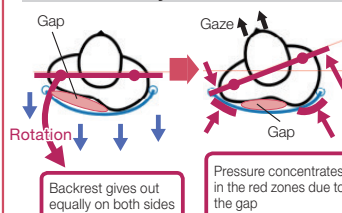
## Independent Left-Right Backrest Adjustment! Supports Good Posture from 3 Directions with Our 3D Sling Seat

Straight on, from the side and the top. Each NEXT CORE wheelchair is equipped with a 3D Sling Seat backrest. The left and right sides of the backrest are independently adjustable. The backrest stabilizes the posture of users with rounded backs or scoliosis.



A Woman with Scoliosis

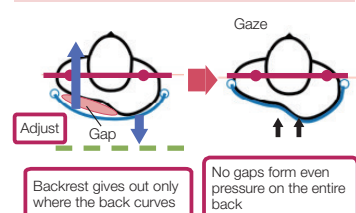
### Conventional Backrest Adjustment



Backrest gives out equally on both sides

Pressure concentrates in the red zones due to the gap

### Back Adjustment of NEXT CORE



Backrest gives out only where the back curves

No gaps form even pressure on the entire back



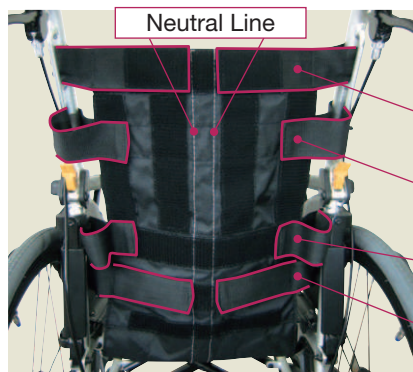


# How to Adjust the Backrest Upholstery (Recommendation)

\* The method explained below is just one example.

We recommend adjusting the backrest with the cooperation of a medical care professional.

## 1. Set Up Before Adjusting the Backrest Upholstery



**Belt①:** Adjust along the neutral line

\* Set slightly loose for users with curved backs.

**Belt②:** Fasten the belt on both sides of the seat.

**Belt③:** Fasten the belt on both sides of the seat.

**Belt④:** Adjust along the neutral line.



Tutorial videos on adjusting the backrest available on YouTube.

**2.** Sit straight back in the seat. The buttocks should be as far back in the seat as possible. Adjust the footrest length.

(Unfastening the belts during the initial settings provides enough give for any back curvatures.)

**3.** Fasten belt ①.

Decide on the approximate position of the user's head.

**7.** Readjust belts ③ and ④.

Readjust belt ① if necessary.

**BEFORE**



**AFTER!!**



**6.** Lightly support the lower part of the rib cage with both hands. Fasten belt ② diagonally downward to replace the support from each hand.



**4.** To prevent the pelvis from tilting backwards, fasten belt ③ in the direction of the pelvis (posterior superior iliac spine).



**5.** Fasten belt ④ diagonally downward to ensure the seat is a good fit for the buttocks.



## NEXT CORE Series Option Chart

	Hybrid Tires (Puncture-Proof)	Walking Cane Holder	Rear IV Pole Set	Oxygen Tank Holder	Anti-Tip Bars (Fall Prevention) with Casters	Brake Extension Bar (5cm • 10cm)	Mudguards (Made of Resin)	Coated Handrim
NEXT-10B	●	●	●	●	●	●	●	●
NEXT-11B	●	●	●	●	●	●	●	●
NEXT-12B	●	●	●	●	●	●	●	●
NEXT-20B	●	●	●	●	●	●	●	×
NEXT-21B	●	●	●	●	●	●	●	×
NEXT-22B	●	●	●	●	●	●	●	×
NEXT-31B	●	●	●	●	●	●	×	●
NEXT-41B	●	●	●	●	●	●	×	×
NEXT-50B	●	●	●	●	●	●	×	●
NEXT-51B	●	●	●	●	●	●	×	●
NEXT-52B HB	Standard Issue	●	●	●	●	●	×	●
NEXT-60B	●	●	●	●	●	●	×	×
NEXT-61B	●	●	●	●	●	●	×	×
NEXT-62B HB	Standard Issue	●	●	●	●	●	×	×
NEXT-70B	●	×	×	×	×	×	×	●
NEXT-71B	●	×	×	×	×	×	×	●
NEXT-80B	●	×	×	×	×	×	×	×
NEXT-81B	●	×	×	×	×	×	×	×

© Specifications are subject to change without prior notice for continual product improvement.

\* We recommend installing anti-tip bars (fall prevention) with the oxygen tank holder. Please be careful of the wheelchair toppling backwards.

### Hybrid Tires (Puncture-Proof)



This option makes pumping air into the tires unnecessary. These puncture-proof airless tires are practically as shock absorbent as air tires. The inner tubes are highly durable with a service life of about 5 years (excluding tire wear).

\* The tire in the photo is different from that of NEXT CORE wheelchairs.

### NEXT CORE Walking Cane Holder (Large)



### Rear IV Pole Set



### For NEXT CORE Oxygen Tank Holder



\* We recommend installing anti-tip bars (fall prevention) with the oxygen tank holder. Please be careful of the wheelchair toppling backwards.

\* Foldable oxygen tank holders are also available.

### For NEXT CORE Anti-tip Bars (Fall Prevention) with Casters



### Brake Extension Bar (5cm • 10cm)



### Seat Belts for 3D Sling Seats



Image of Installation on Chest (For Illustrative Purposes Only)

\* Please avoid using the seat belt for restraining purposes.

### For NEXT CORE Mudguards Self-Propelled • Attendant-Propelled (Made of Resin)



### Coated Handrim



\* Made to order.

\* If you wish to install it after purchasing the wheelchair, the wheels will need to be replaced entirely.



## Standard • Multi-Functional



# Steel Standard Wheelchair **DM Series**

## Steel Standard Model

Self-Propelled



\* May not be JIS compatible with optional parts installed.

Load Capacity  
**100kg**



**DM-81**

Front Seat Height **470 mm**

**DM-81**

Manufacturer's Suggested Retail Price (Non-Taxable) **¥76,420**

Caster x Rear Wheel [Inches]  
**7 × 24 (24 × 13/8)**

[Folded]

330



Weight  
**17.6kg**

Unit: mm

Product Number	Front Seat Height	Seat Width	Seat Depth	Rear Seat Height	Armrest Height	Backrest Height	Footrest Length	Total Height	Total Length	Total Width
<b>DM-81</b>	<b>470</b>	<b>420</b>	<b>400</b>	<b>440</b>	<b>235</b>	<b>390</b>	<b>365~</b>	<b>885</b>	<b>1,045</b>	<b>625</b>

\* Footrest length: distance between the footrests and seat

© Specifications are subject to change without prior notice for continual product improvement.

**Please note that alterations are unavailable for this model.**

Standard • Multi-Functional

Steel Standard Wheelchair



B-16

### Vinyl Leather Seat



The seat upholstery is made of vinyl leather. This is the part of the wheelchair that tends to get the dirtiest. It is easy to wipe the seat clean.

## Options

### Hybrid Tires (Puncture-Proof)



Equipped with special shock absorbent inner tubes, this option makes pumping air into the tires unnecessary.

\* Material: Polyurethane Material (PU Material)

For 1 Wheelchair

Suggested Retail Price (Non-Taxable)

**¥9,240 UP**

### Solid Tires



These puncture-proof tires are made of rubber.

They are suitable for use in hospitals and care facilities.

\* The added weight is 1.5kg per wheelchair.

For 1 Wheelchair

Suggested Retail Price (Non-Taxable)

**¥9,240 UP**

### Oxygen Tank Holder (Standard)



This metal fixture is for holding an oxygen tank on the rear side of a wheelchair. It is suitable for oxygen tanks with a radius of 110mm.

For 1 Wheelchair Suggested Retail Price (Non-Taxable) **¥14,260 UP**

### Anterior IV Pole Set



①Anterior IV Pole Set (1 Iron Pole)

For 1 Wheelchair

Suggested Retail Price (Non-Taxable)

**¥9,510 UP**

②Anterior IV Pole Set (Aluminum, Retractable)

For 1 Wheelchair

Suggested Retail Price (Non-Taxable)

**¥14,790 UP**

### Posterior IV Pole Set



①Posterior IV Pole Set (1 Iron Pole)

For 1 Wheelchair

Suggested Retail Price (Non-Taxable)

**¥11,880 UP**

②Posterior IV Pole Set (Aluminum, Retractable)

For 1 Wheelchair

Suggested Retail Price (Non-Taxable)

**¥17,160 UP**

\* Aluminum retractable IV pole in the photo.



## Anti-tip Bars (Fall Prevention)

### Anti-tip Bars (Fall Prevention) with Rubber Tips



This metal anti-tip bars (fall prevention) fixture is retrofit onto wheelchairs to prevent them from toppling over. It is suitable for users who tend to shift their center of gravity backwards when going uphill.

For 1 Wheelchair Suggested Retail Price (Non-Taxable) **¥7,400 UP**

### Anti-tip Bars (Fall Prevention) with Casters



This anti-tip bars (fall prevention) pipe is equipped with casters. It is easy to move forward even when it is touching the ground.

For 1 Wheelchair Suggested Retail Price (Non-Taxable) **¥9,240 UP**

### Anti-tip Bars (Fall Prevention) Clamp Model



This model of anti-tip bars (fall prevention) is suitable for use on wheelchairs installed with oxygen tank holders and rear IV poles.

For 1 Wheelchair Suggested Retail Price (Non-Taxable) **¥13,200 UP**

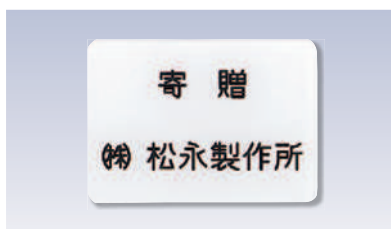
## Custom Printed Backrest • Personalized Name Plate



Names can be printed onto the back of the backrest. It is easy to determine the owner of the wheelchair, contributing to theft prevention.

\* The photo is just one example.

Custom Printed Backrest  
For 1 Wheelchair Suggested Retail Price (Non-Taxable)  
**From ¥3,300 UP**



A personalized name plate is attached to the sideguard. \* The photo is just one example.

Personalized Name Plate  
For 1 Wheelchair Suggested Retail Price (Non-Taxable)  
**From ¥3,300 UP**



You can have your business's logo or other designs transferred using transfer printing. Conditions vary depending on the model. Please contact us for the details.

\* Photo is NEXT-51B

Suggested Retail Price (Non-Taxable)  
**Discretionary Price**

# Steel Multi-Functional Wheelchair CM Series

## Flip-Up Armrests & Swing-Away Footrests

Self-Propelled



Front Seat Height **470 mm**

**CM-251HB**

Manufacturer's Suggested Retail Price (Non-Taxable) **¥113,380**

Caster x Rear Wheel [Inches] **7 × 24 (24 × 13/8)**

[Folded]



Weight **19.9kg**

Unit: mm

Product Number	Front Seat Height	Seat Width	Seat Depth	Rear Seat Height	Armrest Height	Backrest Height	Footrest Length	Total Height	Total Length	Total Width
CM-251HB	470	420	400	440	245	385	340~	880	1,025	625

\* Footrest length: distance between the footrests and seat

© Specifications are subject to change without prior notice for continual product improvement.

There is more weight in the back when installing a posterior IV pole or oxygen tank to the wheelchair. We recommend installing anti-tip bars (fall prevention).

Standard •

Steel Multi-Functional Wheelchair

B-36

## Flip-Up Armrests & Swing-Away Footrests

Attendant-Propelled



Front Seat Height **470 mm**

**CM-261HB**

Manufacturer's Suggested Retail Price (Non-Taxable) **¥113,380**

Caster x Rear Wheel [Inches] **7 × 16 (16 × 13/8)**

[Folded]



Weight **18kg**

Unit: mm

Product Number	Front Seat Height	Seat Width	Seat Depth	Rear Seat Height	Armrest Height	Backrest Height	Footrest Length	Total Height	Total Length	Total Width
CM-261HB	470	420	400	440	245	385	340~	880	980	575

\* Footrest length: distance between the footrests and seat

© Specifications are subject to change without prior notice for continual product improvement.

There is more weight in the back when installing a posterior IV pole or oxygen tank to the wheelchair. We recommend installing anti-tip bars (fall prevention).

B-36

## Flip-Up Armrests & Elevating Unit

Self-Propelled



Front Seat Height **470 mm**

**CM-251HB-SE**

Manufacturer's Suggested Retail Price (Non-Taxable) **¥132,740**

Caster x Rear Wheel [Inches] **7 × 24 (24 × 13/8)**

[Folded]



Weight **21.7kg**

Unit: mm

Product Number	Front Seat Height	Seat Width	Seat Depth	Rear Seat Height	Armrest Height	Backrest Height	Footrest Length	Total Height	Total Length	Total Width
CM-251HB-SE	470	420	400	440	245	385	360~	880	1,040	625

\* Footrest length: distance between the footrests and seat

© Specifications are subject to change without prior notice for continual product improvement.

There is more weight in the back when installing a posterior IV pole or oxygen tank to the wheelchair. We recommend installing anti-tip bars (fall prevention).

B-36



## Flip-Up Armrests & Elevating Unit

Attendant-Propelled



Front Seat Height **470 mm**

**CM-261HB-SE**

Manufacturer's Suggested Retail Price  
(Non-Taxable)

**¥132,740**

Caster x Rear Wheel [Inches]  
**7 × 16 (16 × 13/8)**

[Folded]



Weight  
**19.8kg**

Unit: mm

Product Number	Front Seat Height	Seat Width	Seat Depth	Rear Seat Height	Armrest Height	Backrest Height	Footrest Length	Total Height	Total Length	Total Width
<b>CM-261HB-SE</b>	<b>470</b>	<b>420</b>	<b>400</b>	<b>440</b>	<b>245</b>	<b>385</b>	<b>360~</b>	<b>880</b>	<b>995</b>	<b>575</b>

\* Footrest length: distance between the footrests and seat

© Specifications are subject to change without prior notice for continual product improvement.

**There is more weight in the back when installing a posterior IV pole or oxygen tank to the wheelchair. We recommend installing anti-tip bars (fall prevention).**



B-36

## Features of Models **CM-251HB** and **261HB**

### Flip-Up Armrest



It is easier to transfer from the wheelchair to beds or toilets by flipping up the armrest. It alleviates strain on the attendant.

### Hybrid Tires (Puncture-Proof)



Equipped with special shock absorbent inner tubes, this option makes pumping air into the tires unnecessary.

\* Material: Polyurethane Material (PU Material)

### Swing-Away & Elevating UnitA (Standard)



The option can be adjusted to meet the needs of users with limited mobility in knees.

**(CM-251HB-SE, CM-261HB -SE)**

## Options for **CM-251** and **261**

### Posterior IV Pole Set



①Posterior IV Pole Set (1 Iron Pole)

For 1 Wheelchair  
Suggested Retail Price  
(Non-Taxable)

**¥11,880 UP**

②Posterior IV Pole Set (Aluminum, Retractable)

For 1 Wheelchair  
Suggested Retail Price  
(Non-Taxable)

**¥17,160 UP**

\* Aluminum retractable IV pole in the photo.

### Flip-Up Oxygen Tank Holder



This metal fixture is for holding an oxygen tank on the rear side of a wheelchair. It is suitable for oxygen tanks with a radius of 110mm.

Suggested Retail Price  
(Non-Taxable)

For 1 Wheelchair **¥14,260 UP**

\* Standard oxygen tank holder in the photo.

### Fall Prevention

#### Anti-tip Bars (Fall Prevention) with Rubber Tips

This metal fall prevention fixture is retrofit onto wheelchairs to prevent them from toppling over. It is suitable for users who tend to shift their center of gravity backwards when going uphill.

For 1 Wheelchair  
Suggested Retail Price  
(Non-Taxable) **¥7,400 UP**



#### Anti-tip Bars (Fall Prevention) with Casters

This model of anti-tip bars is equipped with casters. It is easy to move forward even when touching the ground.

For 1 Wheelchair  
Suggested Retail Price  
(Non-Taxable) **¥9,240 UP**



#### Anti-tip Bars (Fall Prevention) Clamp Model

This model of anti-tip bars is suitable for use on wheelchairs installed with oxygen tank holders and rear IV poles.

For 1 Wheelchair  
Suggested Retail Price  
(Non-Taxable) **¥13,200 UP**



Standard •  
Multi-Functional

Steel Multi-Functional Wheelchair

# Aluminum Standard Wheelchair AR Series

## Aluminum Standard Model

Self-Propelled



\* May not be JIS compatible with optional parts installed.

Load Capacity  
100kg



AR-101

Seat Upholstery Color / S-1



S-1

S-2

Front Seat Height **430 mm**

**AR-101** Manufacturer's Suggested Retail Price (Non-Taxable) **¥72,600**

Caster x Rear Wheel [Inches]  
**6 × 22 (22 × 13/8)**

[Folded]



Weight  
13.8kg

Front Seat Height **380 mm**

**AR-101**  
Low-Seat Model

**AR-111** Manufacturer's Suggested Retail Price (Non-Taxable) **¥72,600**

Caster x Rear Wheel [Inches]  
**6 × 22 (22 × 13/8)**

[Folded]



Weight  
13.6kg

Unit: mm

Product Number	Front Seat Height	Seat Width	Seat Depth	Rear Seat Height	Armrest Height	Backrest Height	Footrest Length	Total Height	Total Length	Total Width
AR-101	430	400/420	400	400	250	430	360~	890	1,015	645
AR-111	380	400/420	380	360	250	430	280~	855	960	645

\* Footrest length: distance between the footrests and seat

\* The dimensions are based on the seat width set at 400mm.

© Specifications are subject to change without prior notice for continual product improvement.

Please note that alterations are unavailable for this model.

## Options

### Hybrid Tires (Puncture-Proof)



Equipped with special shock absorbent inner tubes, this option makes pumping air into the tires unnecessary.

\* Material: Polyurethane Material (PU Material)

For 1 Wheelchair  
Suggested Retail Price (Non-Taxable)  
**¥9,240 UP**

### Oxygen Tank Holder



This metal fixture is for holding an oxygen tank on the rear side of a wheelchair. It is suitable for oxygen tanks with a radius of 110mm.

\* Foldable oxygen tank holders are also available.

For 1 Wheelchair  
Suggested Retail Price (Non-Taxable) **¥14,260 UP**

### Anterior IV Pole Set



① Anterior IV Pole Set (1 Iron Pole)  
For 1 Wheelchair  
Suggested Retail Price (Non-Taxable)  
**¥9,510 UP**

② Anterior IV Pole Set (Aluminum, Retractable)  
For 1 Wheelchair  
Suggested Retail Price (Non-Taxable)  
**¥14,790 UP**

### Posterior IV Pole Set



① Posterior IV Pole Set (1 Iron Pole)  
For 1 Wheelchair  
Suggested Retail Price (Non-Taxable)  
**¥11,880 UP**

② Posterior IV Pole Set (Aluminum, Retractable)  
For 1 Wheelchair  
Suggested Retail Price (Non-Taxable)  
**¥17,160 UP**

\* Aluminum retractable IV pole in the photo.

## Fall Prevention

### Anti-tip Bars (Fall Prevention) with Rubber Tips



This metal fall prevention fixture is retrofit onto wheelchairs to prevent them from toppling over. It is suitable for users who tend to shift their center of gravity backwards when going uphill.

For 1 Wheelchair  
Suggested Retail Price (Non-Taxable) **¥7,400 UP**

### Anti-tip Bars (Fall Prevention) with Casters



This model of anti-tip bars is equipped with casters. It is easy to move forward even when touching the ground.

For 1 Wheelchair  
Suggested Retail Price (Non-Taxable) **¥9,240 UP**

### Anti-tip Bars (Fall Prevention) Clamp Model



This model of anti-tip bars is suitable for use on wheelchairs installed with oxygen tank holders and rear IV poles.

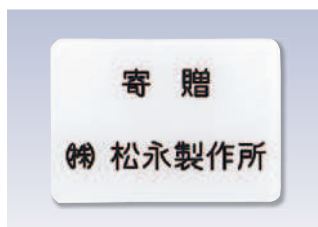
For 1 Wheelchair  
Suggested Retail Price (Non-Taxable) **¥13,200 UP**

## Custom Printed Backrest • Personalized Name Plate • Print



Names can be printed onto the back of the backrest. It is easy to determine the owner of the wheelchair, contributing to theft prevention.

\* The photo is just one example.



A personalized name plate is attached to the sideguard.

\* The photo is just one example.



You can have your business's logo or other designs transferred using transfer printing. Conditions vary depending on the model. Please contact us for the details.

\* Photo is NEXT-51B

Custom Printed Backrest  
For 1 Wheelchair  
Suggested Retail Price (Non-Taxable)  
From **¥3,300 UP**

Personalized Name Plate  
For 1 Wheelchair  
Suggested Retail Price (Non-Taxable)  
From **¥3,300 UP**

Suggested Retail Price (Non-Taxable)  
**Discretionary Price**



## Aluminum Standard Model

Self-Propelled



\* May not be JIS compatible with optional parts installed.

Load Capacity  
100kg



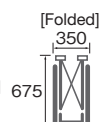
AR-201B

Front Seat Height **430 mm**

**AR-201B**

Manufacturer's Suggested Retail Price  
(Non-Taxable) **¥94,380**

Caster x Rear Wheel [Inches]  
**6 × 22 (22 × 13/8)**



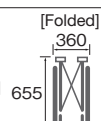
Weight  
**15.2kg**

Front Seat Height **380 mm**

**AR-211B**

Manufacturer's Suggested Retail Price  
(Non-Taxable) **¥94,380**

Caster x Rear Wheel [Inches]  
**6 × 22 (22 × 13/8)**



Weight  
**14.7kg**

Unit: mm

Product Number	Front Seat Height	Seat Width	Seat Depth	Rear Seat Height	Armrest Height	Backrest Height	Footrest Length	Total Height	Total Length	Total Width
AR-201B	430	380/400/420	400	400	250	420	360~	900	1,015	670
AR-211B	380	380/400/420	380	360	250	425	285~	860	955	670

\* Footrest length: distance between the footrests and seat

\* The dimensions are based on the seat width set at 400mm.

© Specifications are subject to change without prior notice for continual product improvement.

Please note that alterations are unavailable for this model.



S-1

S-2

## High-Seat Model

Self-Propelled



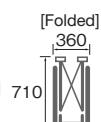
Seat Upholstery Color / S-2

Front Seat Height **470 mm**

**AR-271B**

Manufacturer's Suggested Retail Price  
(Non-Taxable) **¥94,380**

Caster x Rear Wheel [Inches]  
**7 × 24 (24 × 13/8)**



Weight  
**16.0kg**

Unit: mm

Product Number	Front Seat Height	Seat Width	Seat Depth	Rear Seat Height	Armrest Height	Backrest Height	Footrest Length	Total Height	Total Length	Total Width
AR-271B	470	400/420/440	420	440	240	460	350~	930	1,020	690

\* The dimensions are based on the seat width set at 420mm.

\* Footrest length: distance between the footrests and seat

\* The footrest length is at the shortest setting available.

© Specifications are subject to change without prior notice for continual product improvement.

Please note that alterations are unavailable for this model.



S-1

S-2

## Options

### Hybrid Tires (Puncture-Proof)



Equipped with special shock absorbent inner tubes, this option makes pumping air into the tires unnecessary.

\* Material: Polyurethane Material (PU Material)

For 1 Wheelchair  
Suggested Price  
(Non-Taxable)  
**¥9,240 UP**

### Walking Cane Holders



#### Walking Cane Holder (Large)

This is an excellent size for holding 2 crutches or 2 walking canes.



#### Walking Cane Holder (Small)

This is an excellent size for holding 1 walking cane.

Standard • Multi-Functional

Aluminum Standard Wheelchair

# Aluminum Standard Wheelchair AR Series

## Aluminum Standard Model

Attendant-Propelled



\* May not be JIS compatible with optional parts installed.

Load Capacity  
100kg



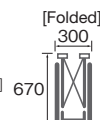
AR-301

Front Seat Height **430 mm**

**AR-301**

Manufacturer's Suggested Retail Price (Non-Taxable) **¥91,480**

Caster x Rear Wheel [Inches] **6×16 (16×13/8)**



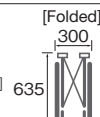
Weight  
**13.8kg**

Front Seat Height **380 mm**

**AR-311**

Manufacturer's Suggested Retail Price (Non-Taxable) **¥91,480**

Caster x Rear Wheel [Inches] **6×16 (16×13/8)**



Weight  
**13.5kg**

Unit: mm

Product Number	Front Seat Height	Seat Width	Seat Depth	Rear Seat Height	Armrest Height	Backrest Height	Footrest Length	Total Height	Total Length	Total Width
AR-301	430	380/400/420	400	400	250	420	360~	895	1,015	600
AR-311	380	380/400/420	380	360	250	425	285~	860	940	600

\* Footrest length: distance between the footrests and seat

\* The dimensions are based on the seat width set at 400mm.

© Specifications are subject to change without prior notice for continual product improvement.

Please note that alterations are unavailable for this model.



S-1

S-2

## High-Seat Model

Attendant-Propelled



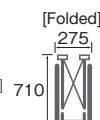
Seat Upholstery Color / S-1

Front Seat Height **470 mm**

**AR-371**

Manufacturer's Suggested Retail Price (Non-Taxable) **¥91,480**

Caster x Rear Wheel [Inches] **7×16 (16×13/8)**



Weight  
**14.3kg**

Unit: mm

Product Number	Front Seat Height	Seat Width	Seat Depth	Rear Seat Height	Armrest Height	Backrest Height	Footrest Length	Total Height	Total Length	Total Width
AR-371	470	400/420/440	420	440	240	460	350~	930	1,000	615

\* The dimensions are based on the seat width set at 420mm.

\* Footrest length: distance between the footrests and seat

\* The footrest length is at the shortest setting available.

© Specifications are subject to change without prior notice for continual product improvement.

Please note that alterations are unavailable for this model.



S-1

S-2

### Options

#### Hybrid Tires (Puncture-Proof)



Equipped with special shock absorbent inner tubes, this option makes pumping air into the tires unnecessary.

\* Material: Polyurethane Material (PU Material)

For 1 Wheelchair

Suggested Retail Price (Non-Taxable)

**¥9,240 UP**

### Standard Feature for AR Series (Except AR-101-111)

#### Drumbrakes



This standard feature is for riding safely on slopes and streets wet from the rain.



### Feature of AR-311

#### Shallow Seat Depth



The shallow seat depth is ideal for shorter users to sit as far back as possible in the seat and to maintain a more stable sitting posture.

(AR-311)



# Aluminum Wide Wheelchair **AR Series**

## Aluminum Wide Model

Self-Propelled



Load Capacity  
**130kg**



Seat Upholstery Color / S-2



S-1



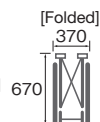
S-2

Front Seat Height **430 mm**

**AR-280**

Manufacturer's Suggested Retail Price (Non-Taxable) **¥137,940**

Caster x Rear Wheel [Inches] **6 × 22 (22 × 13/8)**



Weight  
**16.3kg**

Unit: mm

Product Number	Front Seat Height	Seat Width	Seat Depth	Rear Seat Height	Armrest Height	Backrest Height	Footrest Length	Total Height	Total Length	Total Width
<b>AR-280</b>	<b>430</b>	<b>440/460/480</b>	<b>400</b>	<b>400</b>	<b>250</b>	<b>420</b>	<b>350~</b>	<b>885</b>	<b>1,010</b>	<b>725</b>

\* Footrest length: distance between the footrests and seat

\* The dimensions are based on the seat width set at 460mm.

© Specifications are subject to change without prior notice for continual product improvement.

**Please note that alterations are unavailable for this model.**

## Aluminum Wide Model

Attendant-Propelled



Load Capacity  
**130kg**



Seat Upholstery Color / S-1



S-1



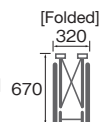
S-2

Front Seat Height **430 mm**

**AR-380**

Manufacturer's Suggested Retail Price (Non-Taxable) **¥135,040**

Caster x Rear Wheel [Inches] **6 × 16 (16 × 13/8)**



Weight  
**14.8kg**

Unit: mm

Product Number	Front Seat Height	Seat Width	Seat Depth	Rear Seat Height	Armrest Height	Backrest Height	Footrest Length	Total Height	Total Length	Total Width
<b>AR-380</b>	<b>430</b>	<b>440/460/480</b>	<b>400</b>	<b>400</b>	<b>250</b>	<b>420</b>	<b>350~</b>	<b>885</b>	<b>1,010</b>	<b>660</b>

\* Footrest length: distance between the footrests and seat

\* The dimensions are based on the seat width set at 460mm.

© Specifications are subject to change without prior notice for continual product improvement.

**Please note that alterations are unavailable for this model.**

## Features of Models **AR-501**, **511B** and **601**

### Flip-Up & Detachable Armrests



It is easier to transfer from the wheelchair to beds or toilets by flipping up the armrest towards the rear. It is also detachable to alleviate strain on the attendant.

**(AR-501, 601)**

### Swing-Away & Detachable Footrests



The footrests can be swung away to shift the wheelchair closer to beds and toilets for easier transfers. This feature is also useful for foot propelling.

### Shallow Seat Depth



The shallow seat depth is ideal for shorter users to sit as far back as possible in the seat and to maintain a more stable sitting posture.

**(AR-511B)**

Standard • Multi-Functional Aluminum Wide Wheelchair

# Aluminum Multi-Functional Wheelchair

AR Series

## Flip-Up Armrests & Swing-Away Footrests

Self-Propelled



\* May not be JIS compatible with optional parts installed.

Load Capacity  
100kg



Seat Upholstery Color / S-1



S-1



S-2

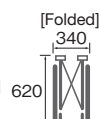
Front Seat Height **420 mm**

**AR-501**

Manufacturer's Suggested Retail Price  
(Non-Taxable)

**¥133,590**

Caster x Rear Wheel [Inches]  
**6×22 (22×13/8)**



Weight  
**16.6kg**

Unit: mm

Product Number	Front Seat Height	Seat Width	Seat Depth	Rear Seat Height	Armrest Height	Backrest Height	Footrest Length	Total Height	Total Length	Total Width
AR-501	420	380/400/420	400	390	250	375	325~	850	955	625

\* Footrest length: distance between the footrests and seat

\* The dimensions are based on the seat width set at 400mm.

© Specifications are subject to change without prior notice for continual product improvement.

**Please note that alterations are unavailable for this model.**

**When installing a rear IV pole or oxygen tank to the wheelchair, please use anti-tip bars (fall prevention).**

## Low-Seat Model

Self-Propelled



Seat Upholstery Color / S-1



S-1



S-2

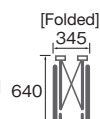
Front Seat Height **380 mm**

**AR-511B**

Manufacturer's Suggested Retail Price  
(Non-Taxable)

**¥111,810**

Caster x Rear Wheel [Inches]  
**6×22 (22×13/8)**



Weight  
**15.3kg**

Unit: mm

Product Number	Front Seat Height	Seat Width	Seat Depth	Rear Seat Height	Armrest Height	Backrest Height	Footrest Length	Total Height	Total Length	Total Width
AR-511B	380	380/400/420	380	360	235	430	260~	910	950	670

\* The dimensions are based on the seat width set at 400mm.

\* Footrest length: distance between the footrests and seat

\* The footrest length is at the shortest setting available.

© Specifications are subject to change without prior notice for continual product improvement.

**Please note that alterations are unavailable for this model.**

## Flip-Up Armrests & Swing-Away Footrests

Attendant-Propelled



\* May not be JIS compatible with optional parts installed.

Load Capacity  
100kg



Seat Upholstery Color / S-2



S-1



S-2

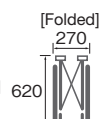
Front Seat Height **420 mm**

**AR-601**

Manufacturer's Suggested Retail Price  
(Non-Taxable)

**¥127,780**

Caster x Rear Wheel [Inches]  
**6×16 (16×13/8)**



Weight  
**15.2kg**

Unit: mm

Product Number	Front Seat Height	Seat Width	Seat Depth	Rear Seat Height	Armrest Height	Backrest Height	Footrest Length	Total Height	Total Length	Total Width
AR-601	420	380/400/420	400	390	250	375	325~	850	945	550

\* Footrest length: distance between the footrests and seat

\* The dimensions are based on the seat width set at 400mm.

© Specifications are subject to change without prior notice for continual product improvement.

**Please note that alterations are unavailable for this model.**

**When installing a rear IV pole or oxygen tank to the wheelchair, please use anti-tip bars (fall prevention).**



# Aluminum Semi-Modular Wheelchair AR Series

## Semi-Modular Model

Self-Propelled



\* May not be JIS compatible with optional parts installed.

Load Capacity  
75kg

[Folded]  
(Front Seat Height 420)

340

625

Weight  
18.0kg

Front Seat Height 420 mm

\* Seat cushion not included.

AR-901

Manufacturer's Suggested Retail Price  
(Non-Taxable)

¥142,300

<Standard Settings>

Caster x Rear Wheel [Inches]  
6 × 22 (22 × 13/8)

625

Unit: mm

Product Number	Front Seat Height	Seat Width	Seat Depth	Rear Seat Height	Armrest Height	Backrest Height	Footrest Length	Total Height	Total Length	Total Width
AR-901	420	380/400/420	400	390	270~350	400	325~	850	955	610

\* Footrest length: distance between the footrests and seat

\* The dimensions are based on the seat width set at 400mm.

\* The dimensions are subject to change depending on the adjustment of each part.

\* The armrest height is 5-level adjustable in 20mm increments.

© Specifications are subject to change without prior notice for continual product improvement.

Please note that alterations are unavailable for this model.

When installing a rear IV pole or oxygen tank to the wheelchair, please use anti-tip bars (fall prevention).  
(For AR-901 Only)

3D Cushion (Standard Feature)



Seat Upholstery Color / S-1



S-1



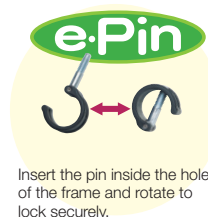
S-2

## Size Adjustment Functions

### Seat Width Adjustment

Adjustable by Switching to an X-Frame (Sold Separately)

The seat frame is fixed using e-Pins, so the seat width is adjustable (by switching to an X-frame) without using any tools. The tipping unit is specially designed into a form easy to step on.



Insert the pin inside the hole of the frame and rotate to lock securely.



Remove ①. Pull ② out in the direction of the arrow.

1

### Seat Height Adjustment

The adjustable caster fork is used to finely adjust the front seat height.



Adjustable Caster Fork

Set the caster installation spacer above or below the frame to roughly adjust the front seat height.



Installation Spacer

2

### Backrest • Seat Upholstery Adjustment

The backrest and seat upholstery can be adjusted to fit each user's posture with separate belt buckles.



3

### Height Adjustable Armrests

Armrests tend to be too low when using cushions with the wheelchair. This feature is useful for adjusting the armrests to a comfortable height. The armrests are made of high-strength resin for increased durability and precision.



4

## Main Features of AR-901

### Swing-Away & Detachable Footrests



The footrests can be conveniently swung away to shift the wheelchair closer to beds and toilets for much easier transfers. Remove the footrest on the healthy side of the user's body for a comfortable set-up for foot propelling.

### Flip-Up Armrest



This feature makes lateral transfers in and out of wheelchairs easier. The armrest is made of high-strength resin for increased durability and precision.

### Detachable Armrest



Lateral transfers in and out of wheelchairs are made even easier for attendants by flipping up and detaching the armrest. (Mostly for two-person assist)

### Drumbrakes



The drumbrakes are used by attendants to brake by controlling the wheel axle. This braking system is useful for riding safely on slopes and streets wet from the rain. Requiring little power input to brake, this feature is especially convenient for female and elderly attendants. (A standard feature on self- and attendant-propelled models)

Standard •  
Multi-Functional

Aluminum Semi-Modular Wheelchair

# Aluminum Semi-Modular Wheelchair AR Series

Semi-Modular Model

Attendant-Propelled

Load Capacity 75kg

Seat Upholstery Color / S-2

S-1 S-2

Front Seat Height 420 mm

\* Seat cushion not included.

AR-901

Manufacturer's Suggested Retail Price (Non-Taxable) ¥142,300

Caster x Rear Wheel [Inches] 6×16 (16×13/8)

Weight 16.4kg

Unit: mm

Product Number	Front Seat Height	Seat Width	Seat Depth	Rear Seat Height	Armrest Height	Backrest Height	Footrest Length	Total Height	Total Length	Total Width
AR-901	420	380/400/420	400	390	270~350	400	325~	850	945	550

\* Footrest length: distance between the footrests and seat

\* The dimensions are based on the seat width set at 400mm.

\* The dimensions are subject to change depending on the adjustment of each part.

\* The armrest height is 5-level adjustable in 20mm increments.

\* Switching to an X-frame is necessary to adjust seat width.

© Specifications are subject to change without prior notice for continual product improvement.

Please note that alterations are unavailable for this model.

When installing a rear IV pole or oxygen tank to the wheelchair, please use anti-tip bars (fall prevention). (For AR-901 Only)

3D Cushion (Standard Feature)

Main Features of AR-901

Installation Spacer Positions

Adjustable Fork

Self-Propelled

Attendant-Propelled

Axle Positions

Attendant-Propelled

Self-Propelled

Chart of Wheelchair Sizes (AR-901(Self-Propelled)(Attendant-Propelled))

	Front Seat Height	Rear Seat Height	Caster Size	Rear Wheel Size	Installation Spacer Position	Adjustable Fork Hole Position	Axle Position
Self-Propelled	390	365	5 Inches	20 Inches	A	a	1
	400	365	5 Inches	20 Inches	A	b	1
	410	385	6 Inches	20 Inches	A	b	2
	420	390	6 Inches	22 Inches	A	c	1
	430	410	6 Inches	22 Inches	A	d	2
	440	410	6 Inches	22 Inches	B	d	2
	450	420	6 Inches	24 Inches	B	e	1
Attendant-Propelled	460	430	6 Inches	24 Inches	C	e	2
	470	450	6 Inches	24 Inches	D	e	3
	390	360	5 Inches	16 Inches	A	a	3
	400	370	5 Inches	16 Inches	A	b	4
	410	380	6 Inches	16 Inches	A	b	4
	420	390	6 Inches	16 Inches	A	c	5
	430	400	6 Inches	16 Inches	A	d	5
Attendant-Propelled	440	410	6 Inches	16 Inches	B	d	6
	450	420	6 Inches	16 Inches	B	e	6
	460	430	6 Inches	16 Inches	C	e	7
	470	440	6 Inches	16 Inches	D	e	7

\* The front seat height indicated refers to the height above the seat frame.

Options

Swing-Away & Elevating Unit A (Standard)

Swing-Away & Elevating Unit A (Standard) (Suggested Price ¥22,880 UP). This option can be adjusted to meet the needs of users with limited mobility in knees. Exchanging to swing-away footrests may require fine-tuning.

Flip-Up Oxygen Tank Holder

\* Standard oxygen tank holder in the photo.

Posterior IV Pole Set

\* Option/ Equipped with aluminum retractable IV pole

Anti-Tip Bars (Fall Prevention) (For AR-901 Only)

\* Those in the photo are equipped with casters.



# Aluminum Compact Semi-Modular Wheelchair AR Series

## Compact Semi-Modular Model

Self-Propelled



Seat Upholstery Color / S-2



S-1

S-2

Front Seat Height **370 mm**

\* Seat cushion not included.

**AR-911S**

Manufacturer's Suggested Retail Price  
(Non-Taxable)

**¥142,300**

<Standard Settings>  
Caster x Rear Wheel [Inches]  
**5×18 (18×13/8)**

[Folded]  
(Front Seat Height 370)



Weight  
**16.5kg**

Unit: mm

Product Number	Front Seat Height	Seat Width	Seat Depth	Rear Seat Height	Armrest Height	Backrest Height	Footrest Length	Total Height	Total Length	Total Width
AR-911S	370	380/400	360	350	200~280	455	270~	900	930	620

\* Footrest length: distance between the footrests and seat \* The dimensions are based on the seat width set at 400mm.

\* The dimensions are subject to change depending the adjustment of each part.

\* The armrest height is 5-level adjustable in 20mm increments.

© Specifications are subject to change without prior notice for continual product improvement.

Please note that alterations are unavailable for this model.

When installing a rear IV pole or oxygen tank to the wheelchair, please use anti-tip bars (fall prevention). (For AR-911 Only)

Front Seat Height (mm)	Rear Seat Height (mm)	Caster Size	Installation Spacer Position	Adjustable Fork Position	Rear Wheel Size	Axle Position
330	310	5	A	*	18	①
350	330			C		②
370	350		C	③		
390	370			D		④

3D Cushion (Standard Feature)



\* Will be equipped with a fork exclusively used for this size. Please refer to the chart below for information about A~B, ③~⑤, ①~⑤.

## Compact Semi-Modular Model

Attendant-Propelled



Seat Upholstery Color / S-1



S-1

S-2

Front Seat Height **370 mm**

\* Seat cushion not included.

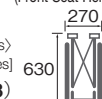
**AR-911S**

Manufacturer's Suggested Retail Price  
(Non-Taxable)

**¥142,300**

<Standard Settings>  
Caster x Rear Wheel [Inches]  
**5×16 (16×13/8)**

[Folded]  
(Front Seat Height 370)



Weight  
**15.5kg**

Unit: mm

Product Number	Front Seat Height	Seat Width	Seat Depth	Rear Seat Height	Armrest Height	Backrest Height	Footrest Length	Total Height	Total Length	Total Width
AR-911S	370	380/400	360	350	200~280	455	270~	900	930	555

\* Footrest length: distance between the footrests and seat \* The dimensions are based on the seat width set at 400mm.

\* The dimensions are subject to change depending the adjustment of each part.

\* The armrest height is 5-level adjustable in 20mm increments.

© Specifications are subject to change without prior notice for continual product improvement.

Please note that alterations are unavailable for this model.

When installing a rear IV pole or oxygen tank to the wheelchair, please use anti-tip bars (fall prevention). (For AR-911 Only)

Front Seat Height (mm)	Rear Seat Height (mm)	Caster Size	Installation Spacer Position	Adjustable Fork Position	Rear Wheel Size	Axle Position
330	310	5	A	*	16	②
350	330			C		③
370	350		④			
390	370		⑤			

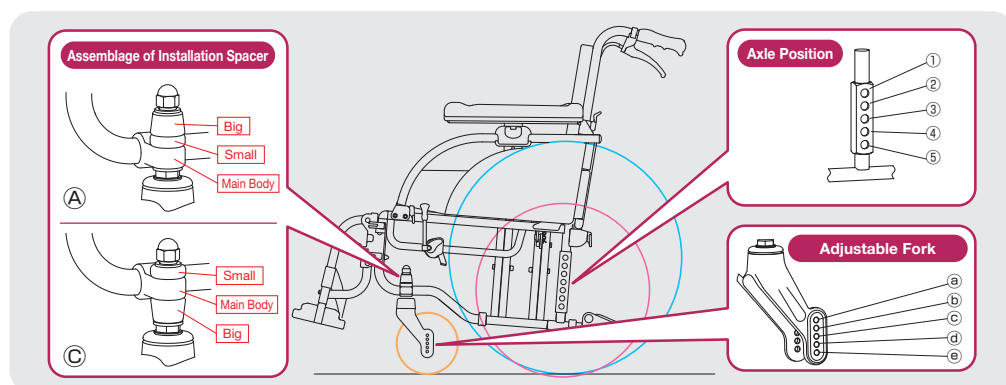
3D Cushion (Standard Feature)



\* Will be equipped with a fork exclusively used for this size. Please refer to the chart below for information about A~B, ③~⑤, ①~⑤.

## Seat Height Adjustment

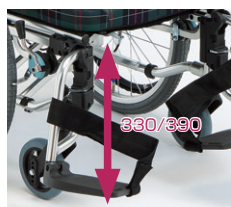
The seat height of the wheelchair is adjustable by changing the size of the casters and rear wheels, or changing the mounting position. A self-propelled wheelchair can also be converted into a attendant-propelled one, and vice versa.



## Features of AR-911S

### Extra-Low Seat

Shorter users can sit with their feet firmly planted in this extra-low seat wheelchair. It is safer and more comfortable to transfer in and out of.



### Shallow Seat Depth

Shorter users can sit far back into the seat and maintain a more stable sitting posture.



### Height Adjustable Armrests

The armrest height is adjustable to a low height (200mm) suitable for shorter users.



# Stylish Multi-Functional Wheelchair MY Series

## Stylish Multi-Functional Model

Self-Propelled



Seat Upholstery Color / M-2/M-3



M-1/M-3

M-2/M-3

Front Seat Height **425 mm (445) mm**

\* Seat cushion not included.

**MY-1**

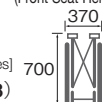
Manufacturer's Suggested Retail Price  
(Non-Taxable)

**¥170,370**

Caster x Rear Wheel [Inches]

**6 (Super) × 22 (22 × 13/8)**

[Folded]  
(Front Seat Height 425)



Cushion Included

**Weight  
18.0kg**

Unit: mm

Product Number	Front Seat Height	Seat Width	Seat Depth	Rear Seat Height	Armrest Height	Backrest Height	Footrest Length	Total Height	Total Length	Total Width
MY-1	425 (445)	400	400	395/410	240~300	415	330~	835	1,065	650

\* Footrest length: distance between the footrests and seat

\* The armrest height is 20mm increments.

\* The factory setting of the front seat height is 425mm.

\* Additional fees are required for adjustments to the front seat height before shipping.

◎ Specifications are subject to change without prior notice for continual product improvement.

**There is more weight in the back when installing a posterior IV pole or oxygen tank to the wheelchair. We recommend installing anti-tip bars (fall prevention).**

3D Cushion (Standard Feature)



## Stylish Multi-Functional Model

Attendant-Propelled



Seat Upholstery Color / M-1/M-3



M-1/M-3

M-2/M-3

Front Seat Height **425 mm (445) mm**

\* Seat cushion not included.

**MY-2**

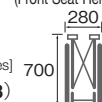
Manufacturer's Suggested Retail Price  
(Non-Taxable)

**¥170,370**

Caster x Rear Wheel [Inches]

**6 (Super) × 16 (16 × 13/8)**

[Folded]  
(Front Seat Height 425)



Cushion Included

**Weight  
16.3kg**

Unit: mm

Product Number	Front Seat Height	Seat Width	Seat Depth	Rear Seat Height	Armrest Height	Backrest Height	Footrest Length	Total Height	Total Length	Total Width
MY-2	425 (445)	400	400	395/410	240~300	415	330~	835	1,065	565

\* Footrest length: distance between the footrests and seat

\* The armrest height is 20mm increments.

\* The factory setting of the front seat height is 425mm.

\* Additional fees are required for adjustments to the front seat height before shipping.

◎ Specifications are subject to change without prior notice for continual product improvement.

**There is more weight in the back when installing a posterior IV pole or oxygen tank to the wheelchair. We recommend installing anti-tip bars (fall prevention).**

3D Cushion (Standard Feature)



## Features of MY Series

### Adjustable Seat Height



The front seat height can be adjusted to 425/445mm.

\* A standard issue wheelchair is set at 425mm.

### Flip-Up Armrest



It is easier to transfer onto beds and toilets by flipping up the armrest. It alleviates strain on the attendant.

### Swing-Away & Detachable Footrests



The footrests can be swung away to shift the wheelchair closer to beds and toilets for easier transfers. This feature is also useful for foot propelling.

### Height Adjustable Armrests



The armrest can be adjusted to a height suitable for the user.

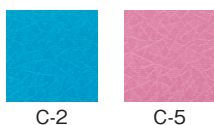


## Ultra Lightweight Standard Model

Self-Propelled



Seat Upholstery Color / C-2



C-2

C-5

Front Seat Height **430 mm**

**USL-1B-P**

Manufacturer's Suggested Retail Price  
(Non-Taxable)

**¥175,700**

Caster x Rear Wheel [Inches]  
**6 × 22 (22 × 1)**

[Folded]  
USL-1B-P  
380  
640

Weight  
**10.0kg**

Unit: mm

Product Number	Front Seat Height	Seat Width	Seat Depth	Rear Seat Height	Armrest Height	Backrest Height	Footrest Length	Total Height	Total Length	Total Width
USL-1B-P	430	400	400	400	220	400	315~	885	930	670

\* Foot length: distance between the footrests and seat

\* The foot length is 4-level adjustable in 20mm increments.

\* Options cannot be installed.

© Specifications are subject to change without prior notice for continual product improvement.

Standard •  
Multi-Functional

Ultra Lightweight Standard Wheelchair

## Ultra Lightweight Standard Model

Attendant-Propelled



Seat Upholstery Color / C-5



C-2

C-5

Front Seat Height **430 mm**

**USL-2B**

Manufacturer's Suggested Retail Price  
(Non-Taxable)

**¥175,700**

Caster x Rear Wheel [Inches]  
**6 × 12 (12 × 13/8)**

[Folded]  
320  
640

Weight  
**8.5kg**

Unit: mm

Product Number	Front Seat Height	Seat Width	Seat Depth	Rear Seat Height	Armrest Height	Backrest Height	Footrest Length	Total Height	Total Length	Total Width
USL-2B	430	400	400	400	220	400	315~	885	930	615

\* Foot length: distance between the footrests and seat

\* The foot length is 4-level adjustable in 20mm increments.

\* Options cannot be installed.

© Specifications are subject to change without prior notice for continual product improvement.



Covers can be attached to the seat screws for added safety.

\* No options available (cover and cushion only).

Function to prevent fingers and hands from getting caught in the wheels.

### Ultra lightweight wheelchair



It is easy for women and elderly people to carry.  
It is also easy to load into a car.

## NOTE

---



## Tilt & Reclining Wheelchair



## MY Tilt - Compact II



We created MY Tilt - Compact II to support relaxation and independence.



Cushion Thickness



Click here to watch a video clip of My Tilt - Compact II  
[NEW] My Tilt - Compact II

## Seat Upholstery Colors



M-12



M-14

※ Seat cushion is black(M-13).

## MY Tilt - Compact II

Front Seat Height **430 mm** \* Seat cushion not included.

**MH-CR2** Manufacturer's Suggested Retail Price (Non-Taxable) **¥261,360**

## MY Tilt - Compact II Lift-Up Design

Front Seat Height **430 mm** \* Seat cushion not included.

**MH-CR2L** Manufacturer's Suggested Retail Price (Non-Taxable) **¥287,760**

## MY Tilt - Compact II Swing-Away Design &amp; Elevating Unit

Front Seat Height **430 mm** \* Seat cushion not included.

**MH-CR2-SE** Manufacturer's Suggested Retail Price (Non-Taxable) **¥282,480**

## MY Tilt - Compact II Lift-Up Swing-Away &amp; Elevating Unit

Front Seat Height **430 mm** \* Seat cushion not included.

**MH-CR2L-SE** Manufacturer's Suggested Retail Price (Non-Taxable) **¥308,880**

Unit: mm

Product Number	Caster x Rear Wheel	Front Seat Height	Seat Width	Seat Depth	Armrest Height	※1 Backrest Height	Footrest Length	Total Length	Total Height	Total Width	Folded Width	Weight
<b>MH-CR2</b>	5×12	430	400	380	0・140~300	600(670)	330~	980	1,165	530	325	25.5kg
<b>MH-CR2-SE</b>	5×12	430	400	380	0・140~300	600(670)	300~	935	1,165	530	325	27.3kg
<b>MH-CR2L</b>	5×12	430	400	380	0・140~300	600(670)	330~	980	1,165	530	400	27.5kg
<b>MH-CR2L-SE</b>	5×12	430	400	380	0・140~300	600(670)	300~	935	1,165	530	400	29.3kg

\*1 The position of the pad can be adjusted to accommodate.

## Options



## Seat cushion (B-60)

Manufacturer's Suggested Retail Price (Non-Taxable)

**Discretionary Price**

## Only seat cushion cover (B-60)

Manufacturer's Suggested Retail Price (Non-Taxable)

**Discretionary Price**



■MH Reclining Oxygen Tank Holder[C]

Reference Price (Non-Taxable)

**Discretionary Price**



■Expole

Reference Price(Non-Taxable)

**¥14,400 UP**



■Table

\*Oasis exclusive table can be installed.

Reference Price (Non-Taxable)

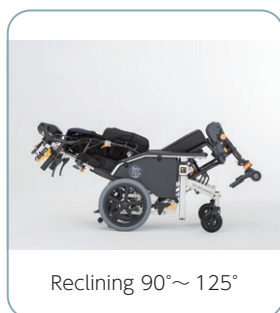
**¥26,500 UP**



## Relaxation (resting posture) And Support independence (active posture)

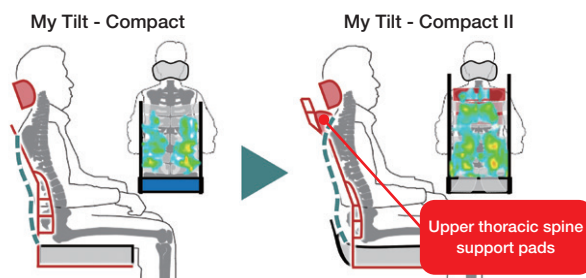
### ◆ Relaxation (resting posture) And Support independence (active posture)

Tilting the seat with the tilting mechanism shifts the center of gravity backward, and tilting the backrest with the reclining mechanism allows the user to assume a relaxed posture.



### ◆ Support independence (active posture)

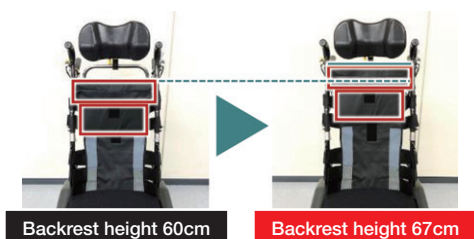
We have created the world's first upper thoracic spine support pad. The upper back is supported firmly up to the shoulder blades to make it easier for those with unstable posture to sit comfortably.



## Adjust the height of the backrest to support the tallest users

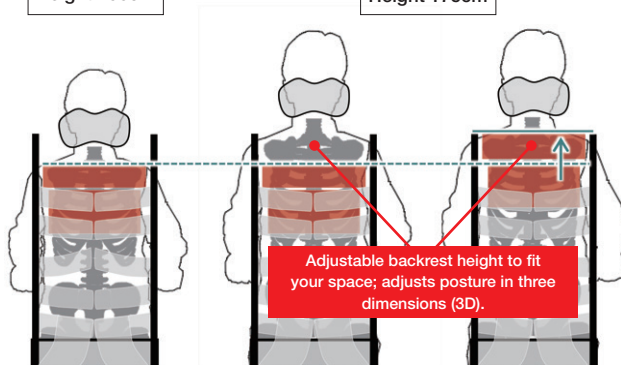
### ◆ Adjustable backrest height from 60 cm to 67 cm

The backrest can be set to a height of 67 cm by repositioning the upper thoracic support pad and the pad below it. The back of tall users can also be firmly supported.  
※Height 155cm~175cm can be accommodated.



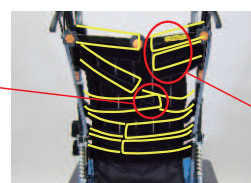
Height 155cm

Height 175cm



**Adjustable backrest height to fit your space; adjusts posture in three dimensions (3D).**

You can stretch the belt according to the position you want to support.



You can loosen the belt where you want to loosen it.

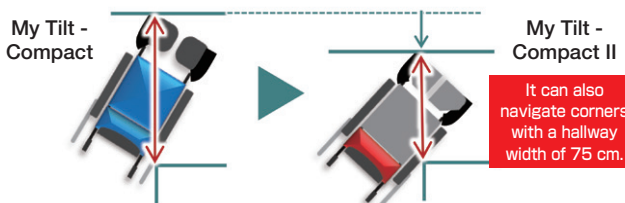
※3D Sling Seat is a registered trademark of Deai Kobo Ltd.

## New Functionalities of My Tilt - Compact II

### ◆ Lift-Up

When you step on the lift-up pedal, the rear wheels lift, allowing for sideways movement and on-the-spot turns. It can also navigate corners with a hallway width of 75 cm.

\*Only compatible with MH-CR2L/CR2L-SE.



### ◆ Snake Headrest

You can adjust their head position from the tallest to the smallest.



### ◆ Front & Back Interlocking Footbrakes

The brake can be locked and unlocked with your foot from the front, back.



### ◆ Hybrid Tire (Puncture-Proof Tires)

This tire is a puncture proof tire with a urethane foam cushioning instead of a tube.



## My Tilt - Mini 3D



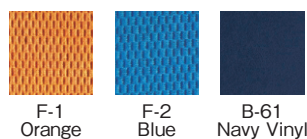
MH-SRL, MH-SRL-SE Only

### Equipped with Lift-Up Unit

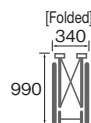
This feature enables lateral movements. The wheelchair can be placed right next to the bed and rotate in place.

Easy to Use Even for Shorter Users  
Suitable User Height **140cm~165cm**

\* Rough Estimate



3D Cushion  
(Standard Feature)



Reclining Angle	Tilt Angle
90°~110°	0°~25°

\* Seat cushion not included

\* Seat cushion not included

Front Seat Height <b>410 mm</b>	Swing-Away Design
Manufacturer's Suggested Retail Price (Non-Taxable)	Caster x Rear Wheel [Inches]
<b>MH-SR</b>	<b>¥261,360 5 × 12 (12 × 13/8)</b>

Front Seat Height <b>410 mm</b>	Swing-Away Design & Lift-Up Unit
Manufacturer's Suggested Retail Price (Non-Taxable)	Caster x Rear Wheel [Inches]
<b>MH-SRL</b>	<b>¥287,760 5 × 12 (12 × 13/8)</b>

\* Seat cushion not included

\* Seat cushion not included

Front Seat Height <b>410 mm</b>	Swing-Away Design & Elevating Unit
Manufacturer's Suggested Retail Price (Non-Taxable)	Caster x Rear Wheel [Inches]
<b>MH-SR-SE</b>	<b>¥282,480 5 × 12 (12 × 13/8)</b>

Front Seat Height <b>410 mm</b>	Swing-Away & Elevating Design • Lift-Up Unit
Manufacturer's Suggested Retail Price (Non-Taxable)	Caster x Rear Wheel [Inches]
<b>MH-SRL-SE</b>	<b>¥308,880 5 × 12 (12 × 13/8)</b>

Unit: mm

Product Number	Front Seat Height	Seat Width	Seat Depth	Rear Seat Height	Armrest Height	Backrest Height	Footrest Length	Total Height	Total Length	Total Width	Weight
<b>MH-SR</b>	410	400	350	410	0-140~300	480	260~	1,010	890	530	24.7kg
<b>MH-SR-SE</b>	410	400	350	410	0-140~300	480	300~	1,010	880~1,195	530	26.5kg
<b>MH-SRL</b>	410	400	350	410	0-140~300	480	260~	1,010	890	530	27.0kg
<b>MH-SRL-SE</b>	410	400	350	410	0-140~300	480	300~	1,010	880~1,195	530	29.0kg

\* The Swing-Away & Elevating Unit B (90 Degree) for exclusive use with My Tilt · Mini 3D is also sold individually.

\* Please note that alterations are unavailable for this model.

## Options



■ **MH Reclining Oxygen Tank Holder[C]**

Reference Price (Non-Taxable)

**Open Price**



■ **Expole**

Reference Price(Non-Taxable)

**¥14,400 UP**



■ **Table**

\*Oasis exclusive table can be installed.

Reference Price (Non-Taxable)

**¥26,500 UP**

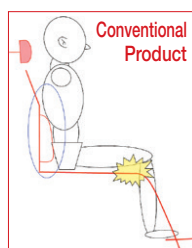


## Easy to Use Even for Shorter Users! Adjustable Features of My Tilt - Mini 3D!



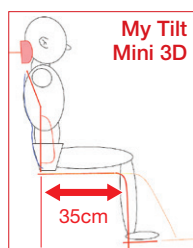
Point  
2

A Seat Shorter Users Can Sit Far Back in Shallow Seat Depth (35cm)



**[Deeper Seat]**

The back of the knees touch the seat. The user cannot sit far back.

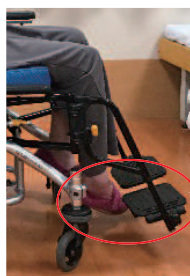


**[Shallower Seat]**

The user can sit far back to reduce the risk of sacral sitting (slumping).

Point  
4

Tucked in as Much as Possible 90 Degree Footrests (Position • Angle Adjustable)



Users unable to extend their knees or suffering from malformation of feet joints (equinus contracture) can properly position their feet on the footrests.

\* The footrests can be slid 5cm forward from the position closest to the user.

Point  
1

Freely Adjustable Back & Forth • Left & Right from a Low Position Snake Headrest



The headrest is adjustable to a low position optimal for shorter users. Thanks to this new structure, the position and angle headrest can be adjusted left & right • back & forth simultaneously.

Point  
3

Supports Stable Sitting Positions for Users with Rounded Back Forward-Folding Backrest Frame (Positive Feature)



The Forward-Folding Backrest frame is a popular mechanism in our OASIS - Positive Series. It is easier to reduce the gap between the backrest and the shoulder girdle which tend to form for users with rounded backs. This stabilizes the head to neck areas and makes it easier to find an optimal eating position.

Point  
5

Hybrid Tire Design

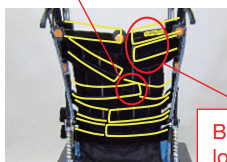
\* Puncture-Proof Tires (Standard Feature)

Point  
6

Adjustable Backrest Height to Fit Your Space [3D Sling Seat]

\* The 3D Sling Seat is a registered trademark of Deai Kobo Ltd.

Belts can be fastened only where the user needs support



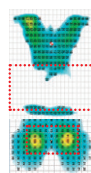
Belts can be loosened only where they need to be

**[Comparing the Pressure from Conventional Seats and 3D Sling Seats]**

Supporting the entire back reduces pressure on the buttocks.



Conventional Seat



3D Sling Seat



Tilt &  
Reclining

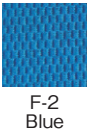
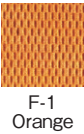
Ultra-Slim & Compact Tilt & Reclining Wheelchair

# My Tilt - Grand 3D

My Tilt - Grand 3D



A Tilt & Reclining Wheelchair Taller Users Can Sit Comfortably In  
Equipped with a lift-up unit for lateral movement and in-place rotation.



Front Seat Height **470 mm** **Swing-Away Design**

**MH-GR** Manufacturer's Suggested Retail Price (Non-Taxable) **¥262,680** Caster x Rear Wheel [Inches] **6 × 16 (16 × 13/8)**

Front Seat Height **470 mm** **Swing-Away Design & Elevating Unit**

**MH-GR-SE** Manufacturer's Suggested Retail Price (Non-Taxable) **¥283,800** Caster x Rear Wheel [Inches] **6 × 16 (16 × 13/8)**

Front Seat Height **470 mm** **Swing-Away Design & Lift-Up Unit**

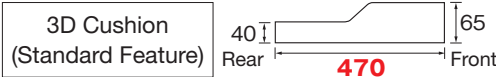
**MH-GRL** Manufacturer's Suggested Retail Price (Non-Taxable) **¥310,200** Caster x Rear Wheel [Inches] **6 × 16 (16 × 13/8)**

Front Seat Height **470 mm** **Swing-Away & Elevating Design • Lift-Up Unit**

**MH-GRL-SE** Manufacturer's Suggested Retail Price (Non-Taxable) **¥331,320** Caster x Rear Wheel [Inches] **6 × 16 (16 × 13/8)**

Product Number	Seat Height	Seat Width	Seat Depth	Armrest Height	Backrest Height	Footrest Length	Total Height	Total Length	Total Width	Tilt Angle	Reclining Angle	Weight
MH-GR	470	440	380*	0-140~300	630	380~	1115	1030	620	0°~30°	95°~130°	25.0kg
MH-GR-SE	470	440	380*	0-140~300	630	330~	1115	980	620	0°~30°	95°~130°	26.7kg
MH-GRL	470	440	380*	0-140~300	630	380~	1115	1030	620	0°~30°	95°~130°	29.5kg
MH-GRL-SE	470	440	380*	0-140~300	630	330~	1115	980	620	0°~30°	95°~130°	31.2kg

\* The seat cushion is 470mm deep.



## Super User-Friendly Features on My Tilt - Grand!

**Lift-Up Unit**  
\* MH-GRL, MH-GRL-SE Only



**Lift-Up Bar**

When the lift-up bar is lowered, the wheels float up.

This enables lateral movement and in-place rotation!

**Back & Forth, Left & Right Integrated Footbrake**



The brake can be activated · deactivated by stepping on any of the back · front · left · right brakes.

**One-Touch Height Adjustable BJ Headrest**



**Pinch**

One touch is all it takes to adjust the headrest height. It is very easy to adjust the headrest position after transferring onto the wheelchair.

**Slope Rollers**



Even when the underside of the footrests bump into the slope, the slope rollers rotate to help to keep moving up the slope. They lower the risk of damages.

## Options



**Snake Headrest**  
Suggested Price (Non-Taxable) **¥44,000 UP**



**Oxygen Tank Holder for MH-GR**  
\* Incompatible with MH-GRL, MH-GRL-SE Series  
Suggested Price **Discretionary Price**

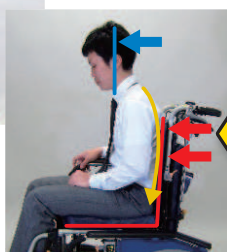


## 3D Model 3 Tips for Sitting Stability

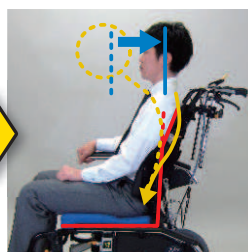
### 1 Backward Curving Backrest Frame



The backrest frame curves largely backwards to prevent the frame from coming into contact with the shoulders.



Conventional Backrest Frame



My Tilt - Compact 3D

The user can sit comfortably by reducing the pressure on the shoulder blades. This alleviates pressure to the abdomen.

### 2 Core Support Frame



This support wraps itself around the user's pelvis to hips from both sides. It stabilizes the sitting position of users who tend to incline to one side.



Image of Core Support Frame (For Illustrative Purposes Only)

### 3 3D Support for Proper Sitting Positions! 3D Sling Seat

\* The 3D Sling Seat is a registered trademark of Deai Kobo Ltd.

#### 【Comparing the Pressure from Conventional Seats and 3D Sling Seats】

The backrest properly supports the entire back to reduce pressure on the buttocks.

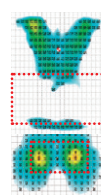
Belts can be fastened only where the user needs support



Belts can be loosened only where they need to be



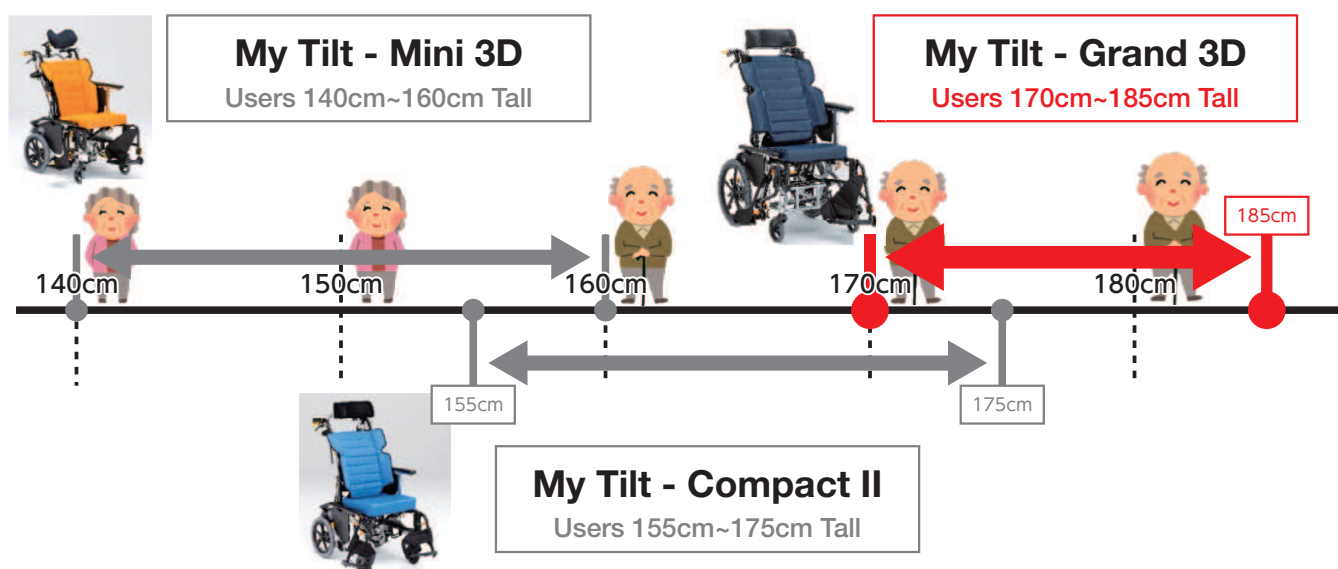
Conventional Seat



3D Sling Seat



## My Tilt Series: Sizing Guide

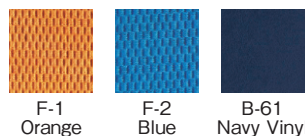


# My Tilt - Rigid 3D

## My Tilt - Rigid 3D



### Seat Upholstery Color



Front Seat Height **450 mm (430-470) mm**

\* Seat cushion not included

**MH-RD3D**

Manufacturer's Suggested Retail Price (Non-Taxable) **¥249,480**

Caster x Rear Wheel [Inches]  
**4 × 16 (16 × 13/8)**

Unit: mm

Product Number	Front Seat Height	Seat Width	Seat Depth	Armrest Height	Backrest Height	Foot Length	Total Height	Total Length	Total Width	Weight
<b>MH-RD3D</b>	450 (430-470)	420	380 (350)	0-140~300	560	280~	1,105 (Front Seat Height 450)	940	600	24.1kg

\* The factory setting of the front seat height is 450mm.

\* Additional fees are required for adjustments to the front seat height before shipping.

○ Specifications are subject to change without prior notice for continual product improvement.

○ Alterations or custom orders are unavailable for this model.

■ Tilt Angle 0°~30°

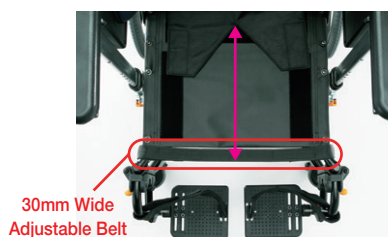
■ Reclining Angle 90°~130°

## ①~④ Features of My Tilt - Rigid!

### Adjustable Seat Height (Factory Setting at 450mm)

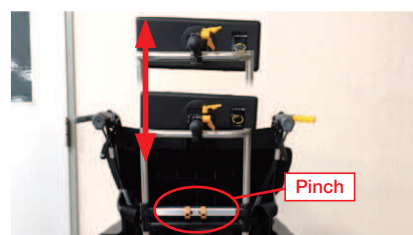


### Adjustable Seat Depth (Factory Setting at 380mm)



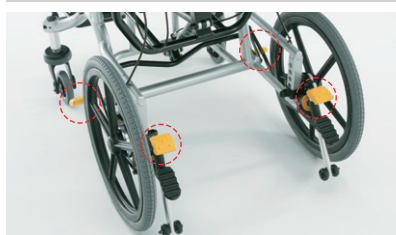
The seat depth can be easily adjusted with a 30mm wide belt.

### One-Touch Height Adjustable BJ Headrest



One touch is all it takes to adjust the headrest height. It is very easy to adjust the position of the headrest after transferring onto the wheelchair.

### Back & Forth, Left & Right Interlocking Footbrakes



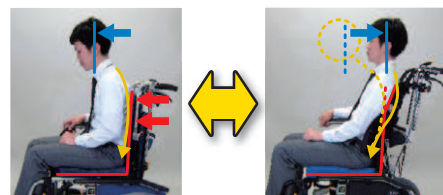
The brake can be activated · deactivated by stepping on any of the back · front · left · right brakes.

### 90 Degree Footrests



\* Swing-Away Design Only  
Even users unable to extend their legs can position their feet on these footrests.

### 3D Model



Conventional Backrest Frame

My Tilt - Compact 3D

- 1 Left & Right Sides of the Backrest Independently Adjustable
- 2 Pelvis & Core Support Frame
- 3 Backward Curving Backrest Frame

## Plenty of User-Friendly Options



■ Snake Headrest  
Suggested Retail Price (Non-Taxable)  
**¥44,000 up**



■ Oxygen Tank Holder For MH-RD3D  
Suggested Retail Price (Non-Taxable)  
**Discretionary Price**



■ Swing-Away & Elevating Unit A (Standard)  
Suggested Retail Price (Non-Taxable)  
**¥22,880 up**



■ EXPOLE  
Suggested Retail Price (Non-Taxable)  
**¥14,400 up**



■ Seat Belts for 3D Sling Seats  
Suggested Retail Price (Non-Taxable)  
**Discretionary Price**  
\* Please avoid using the seat belt for restraining purposes.

\* Please contact us to learn more about other options.



# Tilt & Reclining Wheelchair My Tilt - Value

## My Tilt - Value



### Seat Upholstery Color



Front Seat Height **430 mm**

\* Seat cushion not included

**Swing-Away Design**

**MH-VR**

Manufacturer's Suggested Retail Price  
(Non-Taxable) **¥234,960**

Caster x Rear Wheel [Inches]  
**6 × 16 (16 × 13/8)**

Front Seat Height **430 mm**

\* Seat cushion not included

**Swing-Away Design & Elevating Unit**

**MH-VR-SE**

Manufacturer's Suggested Retail Price  
(Non-Taxable) **¥256,080**

Caster x Rear Wheel [Inches]  
**6 × 16 (16 × 13/8)**

Unit: mm

Product Number	Front Seat Height	Seat Width	Seat Depth	Rear Seat Height	Armrest Height	Backrest Height	Footrest Length	Total Height	Total Length	Total Width	Weight
<b>MH-VR</b>	430	420	400	425	0-180~240	475	370~	1,150	1,140	605	23.6kg
<b>MH-VR-SE</b>	430	420	400	425	0-180~240	475	330~	1,150	1,135	605	25.0kg

■ Tilt Angle 0°~30° ■ Reclining Angle 90°~125° ■ Seat Cushion Thickness 30mm

© Please note that alterations are unavailable for this model.



The angle is adjusted based on the user's physical condition.

Sliding forward can be prevented.

\* 30° tilt, 125° recline in the photo.



\* The footrests are detachable once swung out.

The elevating feature allows the footrests to be adjusted for users with limited movement in their knees.

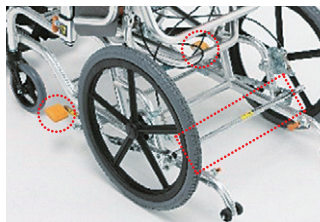
\* A standard feature of MH-VR-SE.

## Valuable Features on a Budget. Our Original My Tilt Wheelchair with Highly-Demanded Standard Features.



### ● Hybrid Tire (Puncture-Proof)

Pumping air into these puncture-proof tires is unnecessary. They are always safe to ride on.



### ● Back & Forth Interlocking Footbrakes

The brake can be easily activated · deactivated just by stepping on any of the back · front · left · right brakes without crouching down.



### ● BJ Headrests

Freely adjust the angle and its left & right · back & forth · up & down position of the headrest according to the position of the user's head.

\* Pillow Shape: BJ- B Type (Small Concave) Standard



### ■ Oxygen tank holder for MH-VR

Suggested Price

**Discretionary Price**

### ● Drumbrakes

This brake is for stable control even in sloped areas.

### ● Adjustable Backrest Upholstery

The backrest upholstery can be adjusted by fastening belts according to the shape of the user's back.

\* We recommend users with curved and uneven backs our wheelchairs with 3D sling seats for independently adjustable left and right sides.

## 1 Interlocking Tilt & Reclining System

Reclining only engages the pelvic area to tilt to prevent the user from sliding forward. Minimal friction occurs between the backrest and back when reclining. The user will more likely maintain good posture even after repeated reclining with this mechanism.



## 2 BJ Headrest

The angle and back & forth position of the headrest can be adjusted. Position the headrest for a sitting position with the user's chin tucked in to reduce the risk of aspiration.



## 3 Swing-Away & Detachable Footrests

The footrests can be swung away to shift the wheelchair closer to beds and toilets for easier transfers. This feature is also useful for foot propelling.



## 4 Adjustable Backrest Upholstery

The backrest upholstery can be adjusted to fit the user's posture for more comfortable seating.



## 5 Angle & Width Adjustable Footrests

Slide the footrests left and right to ensure no gaps from between each footrest. This is especially useful for people needing nursing care.



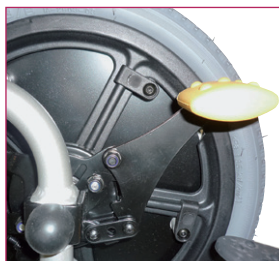
## 6 Forward-Folding Joint on the Upper Section of the Backrest (OS-11TRSP・12TRSP)

Equipped with our newly designed forward-folding joint, the upper section of the backrest is curved forward to enable the entire backrest to support an active forward-leaning posture. Combining this with OASIS double reclining has remarkably improved its body pressure distribution performance.



## 7 Equipped with Footbrakes (Duralock) [Attendant-Propelled Model Only]

The drumbrake is coupled with the footbrake for more stable braking control.



## 8 Ultra-Compact

The total width of the Attendant-Propelled model is 530mm. That of the self-propelled model is 570mm. Thanks to the compact design, both models are excellent for home use.





# Compact Wheelchair with Interlocking Tilt & Reclining System

OASIS Series



## Forward-Folding Joint Model

Self-Propelled



Seat Upholstery Color/B-61  
Headrest/BJ-B  
Height Adjustable Pipe/  
Straight

The push ring shown  
in this photo is  
a previous model.

\* Please choose between two types of headrests (BJ-A or BJ-B) and two types of height adjustable pipes (straight and curved back).



Front Seat Height **390 mm (370) mm**

\* Seat cushion not included

**OS-11TRSP HB**

Manufacturer's Suggested Retail Price  
(Non-Taxable) **¥309,680**

Caster x Rear Wheel [Inches] **5 × 18 (18 × 13/8)**

[Folded]  
(Front Seat Height 390)



Weight  
**25.1kg**

Unit: mm

Product Number	Front Seat Height	Seat Width	Seat Depth	Rear Seat Height	Armrest Height	Backrest Height	Footrest Length	Total Height	Total Length	Total Width
<b>OS-11TRSP HB</b>	<b>390mm (370)</b>	<b>400/420</b>	<b>350</b>	<b>390</b>	<b>180~240</b>	<b>550</b>	<b>285~</b>	<b>1,025</b>	<b>930</b>	<b>617</b>

- \* Footrest length: distance between the footrests and seat
- \* The dimensions are based on the seat width set at 400mm.
- \* The armrest height is 4-level adjustable at 20mm increments.
- \* The headrest is not included in the total height of the wheelchair.
- \* The seat cushion height is 50mm.
- \* The factory setting of the front seat height is 390mm.
- \* Additional fees are required for adjustments to the front seat height before shipping.
- © Specifications are subject to change without prior notice for continual product improvement.

Interlocking	
Reclining Angle	Tilt Angle
90°~115°	0°~25°



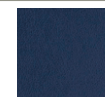
- Waveform Plastic Push Ring

### Seat Upholstery Color

Option +¥3,300



N-2 (Navy)  
Knit



B-61 (Navy)  
Vinyl

## Forward-Folding Joint

Attendant-Propelled



Seat Upholstery Color/B-61  
Headrest/BJ-B  
Height Adjustable Pipe/  
Straight

\* Please choose between two types of headrests (BJ-A or BJ-B) and two types of height adjustable pipes (straight or curved back).



Front Seat Height **430 mm**

\* Seat cushion not included

**OS-12TRSP HB**

Manufacturer's Suggested Retail Price  
(Non-Taxable) **¥280,640**

Caster x Rear Wheel [Inches] **6 × 12 (12 × 13/8)**



Weight  
**23.5kg**

Unit: mm

Product Number	Front Seat Height	Seat Width	Seat Depth	Rear Seat Height	Armrest Height	Backrest Height	Footrest Length	Total Height	Total Length	Total Width
<b>OS-12TRSP HB</b>	<b>430</b>	<b>400/420</b>	<b>350</b>	<b>430</b>	<b>0-140~260</b>	<b>550</b>	<b>300~</b>	<b>1,065</b>	<b>905</b>	<b>530</b>

- \* Footrest length: distance between the footrests and seat
- \* The dimensions are based on the seat width set at 400mm.
- \* The armrest height is 7-level adjustable at 20mm increments.
- \* The headrest is not included in the total height of the wheelchair.
- \* The seat cushion height is 50mm.
- © Specifications are subject to change without prior notice for continual product improvement.

Interlocking	
Reclining Angle	Tilt Angle
90°~115°	0°~25°



### Shallow Seat Depth

Shorter users can sit far back into the seat for a more stable sitting position.

### Seat Upholstery Color

Option +¥3,300



N-2 (Navy)  
Knit



B-61 (Navy)  
Vinyl

Tilt &  
Reclining

Compact Wheelchair with Interlocking Tilt & Reclining System

# Compact Wheelchair with Interlocking Tilt & Reclining System

OASIS Series



Compact Model with Interlocking Tilt & Reclining System

Attendant-Propelled



Seat Upholstery Color/N-2 Headrest/BJ-A Height Adjustable Pipe/Straight

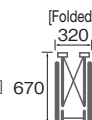
Front Seat Height **430 mm**

\* Seat cushion not included

**OS-12TR HB**

Manufacturer's Suggested Retail Price (Non-Taxable) **¥241,040**

Caster x Rear Wheel [Inches] **6 × 12 (12 × 13/8)**



Weight **23.4kg**

Unit: mm

Product Number	Front Seat Height	Seat Width	Seat Depth	Rear Seat Height	Armrest Height	Backrest Height	Footrest Length	Total Height	Total Length	Total Width
<b>OS-12TR HB</b>	<b>430</b>	<b>400/420</b>	<b>400</b>	<b>430</b>	<b>0-140~</b>	<b>450</b>	<b>330~</b>	<b>965</b>	<b>995</b>	<b>530</b>

- \* Footrest length: distance between the footrests and seat
- \* The dimensions are based on the seat width set at 400mm.
- \* The armrest height is 6-level adjustable at 20mm increments.
- \* The headrest is not included in the total height of the wheelchair.
- \* The seat cushion height is 50mm.
- © Specifications are subject to change without prior notice for continual product improvement.

Interlocking	
Reclining Angle	Tilt Angle
<b>90°~115°</b>	<b>0°~25°</b>

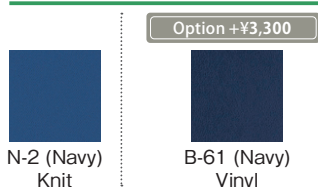
\* Please choose between two types of headrests (BJ-A or BJ-B) and two types of height adjustable pipes (straight or curved back).

## Compact Size of Total Width 530mm



This ultra-slim reclining wheelchair has a total width of 530mm. It is easy to operate in narrow spaces. Remove the seat cushion and headrest when folding the wheelchair up for storage.

## Seat Upholstery Color



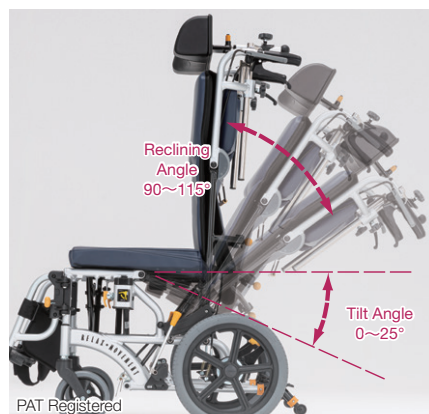
Option +¥3,300

N-2 (Navy) Knit

B-61 (Navy) Vinyl

## Standard Features of the OASIS Series

### New Mechanism to Prevent Forward Sliding & Relieve Adominal Pressure



Reclining only engages the pelvic area to tilt to prevent the user from sliding forward. Minimal friction occurs between the backrest and back when reclining. The user will more likely maintain good posture even after repeated reclining with this mechanism.

### Adjust the Headrest Angle & Position for Better Eating Posture



The angle and back & forth position of the headrest can be adjusted. Position the headrest for a sitting position with the user's chin tucked in to reduce the risk of aspiration.



## OASIS Reclining Options (Same for All Models in Series)

### Option: Seat Upholstery



●B-61 Vinyl    Suggested Retail Price  
(Non-Taxable) **¥3,300 UP**

### Snake Headrest



Suggested Retail Price  
(Non-Taxable) **¥44,000 UP**

### Swing-Away & Elevating Unit



Suggested Retail Price  
(Non-Taxable) **¥22,880 UP**

\* The added weight is about 2.0kg.

\* If this option is selected at the time of purchase,  
the standard swing-away feature is not included.

### Table Set for OASIS Series



Suggested Retail Price  
(Non-Taxable) **¥26,500 UP**

### Oxygen Tank Holder for OASIS Series [Attendant-Propelled Wheelchairs Only]



Suggested Retail Price  
(Non-Taxable) **¥21,120 UP**

### EXPOLE



Suggested Retail Price  
(Non-Taxable) **¥14,400 UP**

\* Please make an inquiry to the distributor for more information about other options.

\* The prices shown refer to the additional fees when purchasing a new wheelchair.

# Steel Reclining Wheelchair **CM Series**

## Reclining Model

Self-Propelled



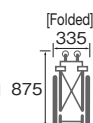
Front Seat Height **470 mm**

Backrest · Footrests Move Separately

**CM-501HB**

Manufacturer's Suggested Retail Price (Non-Taxable) **¥167,910**

Caster x Rear Wheel [Inches] **7 × 24 (24 × 13/8)**



Weight **26.4kg**

Unit: mm

Product Number	Front Seat Height	Seat Width	Seat Depth	Rear Seat Height	Armrest Height	Backrest Height	Footrest Length	Total Height	Total Length	Total Width
<b>CM-501HB</b>	<b>470</b>	<b>400</b>	<b>400</b>	450	230	840	415~	1,270	1,155	655

\* Footrest length: distance between the footrests and seat

© Specifications are subject to change without prior notice for continual product improvement.

Reclining Angle

95°~160°

B-36

## Reclining Model

Attendant-Propelled



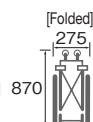
Front Seat Height **470 mm**

Backrest · Footrests Move Separately

**CM-541HB**

Manufacturer's Suggested Retail Price (Non-Taxable) **¥167,910**

Caster x Rear Wheel [Inches] **7 × 16 (16 × 13/8)**



Weight **24.5kg**

Unit: mm

Product Number	Front Seat Height	Seat Width	Seat Depth	Rear Seat Height	Armrest Height	Backrest Height	Footrest Length	Total Height	Total Length	Total Width
<b>CM-541HB</b>	<b>470</b>	<b>400</b>	<b>400</b>	450	230	835	415~	1,270	1,090	585

\* Footrest length: distance between the footrests and seat

© Specifications are subject to change without prior notice for continual product improvement.

Reclining Angle

95°~160°

B-36

## Options (For All Models of the **CM** · **MW** Series)

### Oxygen Tank Holder for Reclining Models

This oxygen tank holder can be retrofit onto reclining wheelchairs. Install onto the piping of the backrest frame using seat fixture screws.

\* We recommend using anti-tip bars (fall prevention) when installing a oxygen tank holder.



Suggested Retail Price (Non-Taxable)

**¥20,600 UP**  
(Anti-Tip Bars (Fall Prevention))

Suggested Retail Price (Non-Taxable)

**¥23,500 UP**  
(Anti-Tip Bars (Fall Prevention) with Casters)

### IV Pole Set for Elevating Models

This IV pole set (IV pole + bracket) can be retrofit onto elevating wheelchairs.

\* Only anterior IV poles are available.

\* Other devices can be installed for fall prevention.

Please make an inquiry if interested.



Anterior IV Pole Bracket for Elevating Models

Suggested Retail Price (Non-Taxable) **¥11,880 UP**

### Anti-Tip Bars (Fall Prevention)



Anti-Tip Bars (Fall Prevention) with Rubber Tips

Suggested Retail Price (Non-Taxable)

**¥7,400 UP**



Anti-Tip Bars (Fall Prevention) with Casters

Suggested Retail Price (Non-Taxable)

**¥9,240 UP**





Aluminum Reclining Wheelchair

MW Series



Reclining Model

Attendant-Propelled





Seat Upholstery Color  
J-1




J-1J-3


Front Seat Height **460 mm**

**MW-14HB** Manufacturer's Suggested Retail Price (Non-Taxable) **¥172,660**

Caster x Rear Wheel (Inches) **7×16 (16×13/8)**



[Folded]  
250



Weight  
18.5kg

Unit: mm

Product Number	Front Seat Height	Seat Width	Seat Depth	Rear Seat Height	Armrest Height	Backrest Height	Footrest Length	Total Height	Total Length	Total Width
MW-14HB	460	400	400	435	240	850	405~	1,270	1,065	560


\* Footrest length: distance between the footrests and seat  
© Specifications are subject to change without prior notice for continual product improvement.

Reclining Angle

90°~160°

For All Models of the CM • MW Series

Hybrid Tires (Puncture-Proof Tires)



This option makes pumping air into the tires unnecessary. These puncture-proof airless tires are practically as shock absorbent as air tires. (Exchanges due to tire wear are not taken into account.)

## Full Reclining Model

Attendant-Propelled



Seat Upholstery Color/B-36



B-36  
Vinyl Leather

Front Seat Height **475 mm**

**FR-11R**

\* Seat cushion not included

Manufacturer's Suggested Retail Price (Non-Taxable) **¥213,840**

Caster x Rear Wheel [Inches] **6 × 12** (Puncture-Proof Tires)

Weight **29.0kg**

Unit: mm

Product Number	Front Seat Height	Seat Width	Seat Depth	Rear Seat Height	Armrest Height	Backrest Height	Footrest Length	Total Height	Total Length	Total Width
FR-11R	475	400	420	455	0-180~240	825	335~	1,245	1,205	535

- \* Footrest length: distance between the footrests and seat
- \* The dimensions are based on the reclining angle at 100° on a cushion.
- \* The armrest height is 5-level adjustable at 20mm increments.
- \* The footrest length is 3-level adjustable at 20mm increments.
- © Specifications are subject to change without prior notice for continual product improvement.



Reclining Angle  
100°~170°

\* The total length is 1,800mm when the reclining angle is at 170°.

## Features of Escort

### Reclining Backrest Interlocked with Elevating Legrests



The backrest can be reclined smoothly without levels. The reclining angle can be adjusted to an almost fully flat mode. This model is recommended for heavily handicapped users on bedrest.

### Hybrid Tires (Puncture-Proof Tires)



These puncture-proof tires are a standard feature. This option makes air pumping unnecessary.

### 5-Level Height Adjustable Armrests



The armrests can be lowered to the same height as the seat. Thanks to this feature, transferring in and out of the wheelchair is much easier. This alleviates strain on the attendants.  
(The armrest height is 5-level adjustable: 0mm, 180mm, 200mm, 220mm, and 240mm.)

# Tilt & Reclining Wheelchair Capable of Lateral Movement

Elise



## Tilt & Full Reclining Model

Attendant-Propelled



Front Seat Height **475 mm**

\* Seat cushion not included

**FR-31TR HB**

Manufacturer's Suggested Retail Price (Non-Taxable) **¥313,640**

Caster x Rear Wheel [Inches]  
**6 × 12 (12 × 13/8)**

Weight  
**39.7kg**

Unit: mm

Product Number	Front Seat Height	Seat Width	Seat Depth	Rear Seat Height	Armrest Height	Backrest Height	Footrest Length	Total Height	Total Length	Total Width
FR-31TR HB	475	400	400~420	465	0-40~240	850	335~	1,240	1,180	650

\* Footrest length: distance between the footrests and seat

\* The dimensions are based on the reclining angle at 100°, the tilt angle at 0°, on a cushion.

\* The armrest height is 10-level adjustable at 25mm increments.

\* The footrest length is 3-level adjustable at 20mm increments.

\* The factory setting of the seat depth is 410mm.

\* The total length when fully flat is 1,800mm.

© Specifications are subject to change without prior notice for continual product improvement.

Seat Upholstery Color/Elise Skin



Elise Skin Vinyl Leather (B-16)

Reclining Angle	Tilt Angle
100°~175°	0°~30°



Seat Upholstery Color/  
Vinyl Leather

## Features of Elise

Tight turns are possible even in narrow spaces with this lift-up feature.

Normal



● Lower the lift-up bar.

Lift-Up



● The safety wheels lower to lift the rear wheels up.

This feature enables lateral movements. The wheelchair can be easily placed right next to the bed.



There is no need to repeatedly reposition the wheelchair when transferring onto the bed.

## Tilt & Reclining Mechanism to Maintain a Relaxing Posture

● 45° Recline · 15° Tilt



● Full Recline



## Footrests

The footrests can be folded backwards to free up space for assistance, such as when loading/unloading the wheelchair.



## Armrests

The armrests can be lowered to the same height as the seat. Assistance is made easier. The armrest is 10-level adjustable to a height appropriate for the user's body type and posture. (0 · 40~240/25mm increments)



\* Range of reclining angle 100°~175°, range of tilt angle 0°~30°

Tilt & Reclining

Tilt & Reclining Wheelchair Capable of Lateral Movement



## NOTE

---



## Child Series



LUUK-01 (Self-Propelled) • LUUK-02 (Attendant-Propelled)

## Matsunaga's Kids Series Modular Wheelchairs for Children

**LUUK.**  
is a great  
first  
wheelchair!

**A modular  
frame**  
that adjusts to  
growing bodies!

**Just  
one frame**  
to meet the  
needs of users  
90cm-130cm  
tall!



**Wide Frame  
with Wide Footrests  
&  
Front & Back Adjustable  
Footrests**



**Support the Entire Back**

Self-Propelled

**LUUK-01** Manufacturer's Suggested Retail Price (Non-Taxable) **¥222,640~**

Attendant-Propelled

**LUUK-02** Manufacturer's Suggested Retail Price (Non-Taxable) **¥222,640~**

### Specification Chart

Unit: mm

Self-Propelled/ Attendant-Propelled	Wheel Size	Front Seat Height	Armrest Height	Seat Width	Seat Depth	Backrest Height
Self-Propelled Model	4x20Inches	375	210	240	240	350
		395		260	260	
	4x22Inches	415	220	280	280	415
		435		300	300	
	5x20Inches	455	230	320	320	480
		475		340	340	
Attendant-Propelled	4x16Inches	400				

\* Custom purchase orders are available.

### Be Unique with Seat Upholstery Colors

● Standard Colors



1. Black/Gray



2. Light Blue/Gray



3. Pink/Gray



4. Blue/Gray



5. Lime Green/Gray



6. Red/Gray

● Optional Colors ¥11,000up

### Be Unique with Frame Colors

● Standard Colors ● Optional Colors 1 ¥27,500up



1. Ivory



2. Shadow Black



3. Aqua Milk



4. Lime Green



5. Pearl Yellow



6. Peach Pink



7. Lavender

● Optional Colors 2 ¥33,000up



8. MP White



9. MP Gun Metallic



10. Sparkle Sky Blue



11. Sparkle Lime



12. Sparkle Orange



13. Candy Red

\* We have an assortment of soft pastel colors and vivid metallic colors.

## Plenty of Options for New Wheelchairs ~List of Additional Fees~



Drumbrake for Attendants

Suggested Retail Price **¥23,300up**


Footbrakes

Suggested Retail Price **¥13,500up**

\*Attendant-propelled models come with duralock footbrakes.  
Note 1) Walking cane holders \* type A anti-tip bars (fall prevention) cannot be installed


Cushion Caster

Suggested Retail Price **¥16,500up**

Mudguards  
(Attendant-Propelled Model Only)

Suggested Retail Price **¥29,000up**


Type A Fall Prevention

Suggested Retail Price **¥19,250up**  
Note) Walking cane holders and footbrakes cannot be installed


Metal Fittings Set for Table

Suggested Retail Price **¥15,400up**

\* Table top not included



Chest Belt

Suggested Retail Price **¥6,600up**


Pelvic Belt

Suggested Retail Price **¥6,600up**


Foot Extension Prevention Belt

Suggested Retail Price **¥7,700up**

Seat Depth Lengthening Belt  
(40mm)

Suggested Retail Price **¥12,000up**

Walking Cane Holder (Self-Propelled Only) ¥4,620 UP

Push Ring Coating ¥21,000 UP

High-Mount Footrests ¥13,200 UP

\* Custom purchase orders of Luuk are available. Please inquire for more information.



## 1.2.3 Ways LUUK is User-Friendly!



### Feature

## 1 Wide Frame Structure with Wide Footrests

Thanks to the wide frame structure with wide footrests, there is enough space for users to place both feet even with braces or knee separators. It is easier and safer to transfer into the wheelchair.

### Feature

## 2 Safe & Secure Design with Less Risk of Falling.

The footrests are positioned closer to the user than the casters. Even when the user steps onto the footrests, the wheelchair does not easily topple over with this highly safe design.



### Feature

## 3 3D Sling Seats and 90 Degree Footrests for Good Posture.



### ● 3D Sling Seat

The shape of the frame and seat easily fit the curvature of the user's back to properly support the entire back.

### ● 90 Degree Footrests

The footrests are positioned to allow users to sit comfortably with their feet tucked closer in.

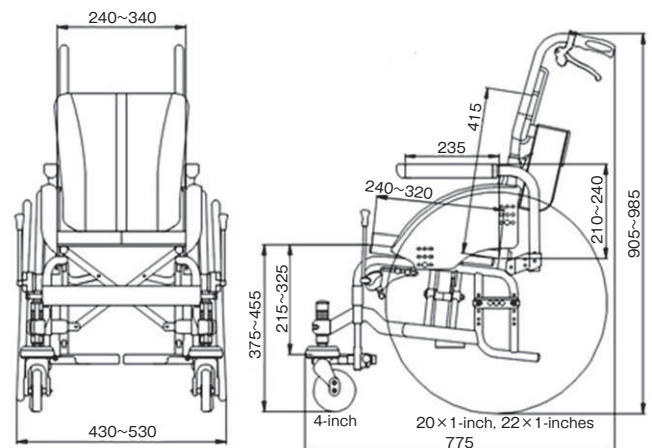
\* 3D Sling Seat is a registered trademark of Deai Kobo Ltd.

## Modular Features for Long-Term Use!

Height Adjustable Front Caster Wheels



Height • Front & Back Adjustable Rear Wheels



\* The above figure is a self-propelled wheelchair with 4-inch casters.

Smile is  
Power!!!



It makes  
you smile and  
want to go out  
when you ride in a  
wheelchair.

That's **Peace**

Peace

Manufacturer's Suggested Retail Price  
(Non-Taxable)

¥197,600~





## Feature

### 1 Easy to wheel a wheelchair. Grip Height and Angle Adjustment



The height and angle can be adjusted by one-touch to the height and angle that is comfortable for the person wheeling a wheelchair. Turning the wheelchair inward makes it easy to wheel even with one hand.



## Feature

### 2 Easy to wheel by themselves. Back Support design



The grip is located behind the backrest, expanding the range of motion for the arms.



Child

Peace

## Feature

### 3 Easy to adjust. Frame design



#### ●Seat depth extension function

Seat depth can be extended by shifting the position of the backrest backward.

#### ●Foot length adjustment function

A wide range of adjustment is available.

## Feature

### 4 Comfortable underfoot. Footrests



The footrest support extends outward, and the plate is large enough to provide comfort even when wearing a brace.

Please refer to  
"The Peace Brochure" for details.





# Standard Wheelchair for Children Indoor 6-Wheel Drive Wheelchair for Children

**Leveret**  
Tight Turn Jr.

## Standard Model for Children

Self-Propelled



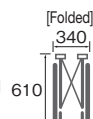
Seat Upholstery Color/AP-3  
Frame Color/Pastel Blue

Front Seat Height **400 mm**

**MKD-M**

Manufacturer's Suggested Retail Price  
(Non-Taxable) **¥184,410**

Caster x Rear Wheel [Inches] **5×20 (20×13/8)**



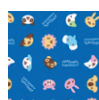
Weight  
**12.8kg**

Unit: mm

Product Number	Front Seat Height	Seat Width	Seat Depth	Rear Seat Height	Armrest Height	Backrest Height	Footrest Length	Total Height	Total Length	Total Width
<b>MKD-M</b>	<b>400</b>	<b>300</b>	<b>305</b>	<b>380</b>	<b>200</b>	<b>350</b>	<b>200~250</b>	<b>900</b>	<b>815</b>	<b>515</b>

\* Footrest length: distance between the footrests and seat

© Specifications are subject to change without prior notice for continual product improvement.

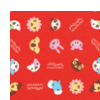


AP-3



Pastel Blue  
(MATS-073)

As soon as the stock runs out, the seat color will change.

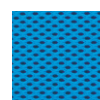


AP-4

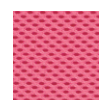


Pastel Pink  
(MATS-074)

As soon as the stock runs out, the seat color will change.



M-7



M-6

## Standard Model for Children

Self-Propelled



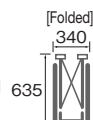
Seat Upholstery Color/AP-4  
Frame Color/Pastel Pink

Front Seat Height **425 mm**

**MKD-L**

Manufacturer's Suggested Retail Price  
(Non-Taxable) **¥184,410**

Caster x Rear Wheel [Inches] **6×22 (22×13/8)**



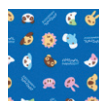
Weight  
**13.4kg**

Unit: mm

Product Number	Front Seat Height	Seat Width	Seat Depth	Rear Seat Height	Armrest Height	Backrest Height	Footrest Length	Total Height	Total Length	Total Width
<b>MKD-L</b>	<b>425</b>	<b>320</b>	<b>330</b>	<b>405</b>	<b>200</b>	<b>350</b>	<b>250~300</b>	<b>925</b>	<b>835</b>	<b>535</b>

\* Footrest length: distance between the footrests and seat

© Specifications are subject to change without prior notice for continual product improvement.

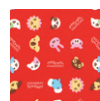


AP-3



Pastel Blue  
(MATS-073)

As soon as the stock runs out, the seat color will change.

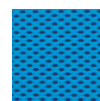


AP-4

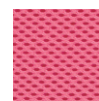


Pastel Pink  
(MATS-074)

As soon as the stock runs out, the seat color will change.



M-7



M-6

## Tight Turn Jr.



6-Wheel Drive for Tight Turns Indoors!



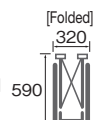
Seat Upholstery Color/AP-4  
Frame Color/Pastel Pink

Front Seat Height **380 mm**

**TT-Jr**

Manufacturer's Suggested Retail Price  
(Non-Taxable) **¥170,370**

Caster x Rear Wheel [Inches] **4×20 (20×1)**



Weight  
**12.0kg**

Unit: mm

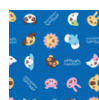
Product Number	Front Seat Height	Seat Width	Seat Depth	Rear Seat Height	Armrest Height	Backrest Height	Footrest Length	Total Height	Total Length	Total Width
<b>TT-Jr</b>	<b>380</b>	<b>260/280/300</b>	<b>260/280/300</b>	<b>360</b>	<b>195</b>	<b>400</b>	<b>200~250</b>	<b>930</b>	<b>785</b>	<b>430</b>

\* Footrest length: distance between the footrests and seat

\* The dimensions are based on the seat width at 260mm and the gap between the wheel and the push rings at 15mm.

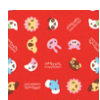
\* The seat width and seat depth are interlinked. (E.g.: The seat depth is 260mm when the seat width is 260mm.)

© Specifications are subject to change without prior notice for continual product improvement.



AP-3

As soon as the stock runs out, the seat color will change.



AP-4

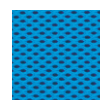
As soon as the stock runs out, the seat color will change.



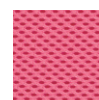
Pastel Blue  
(MATS-073)



Pastel Pink  
(MATS-074)



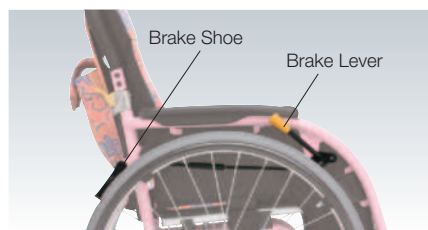
M-7



M-6

## Main Features of Tight Turn Jr.

### J Tackle Brake (For TT-Jr Only)



The brake shoes are placed further towards the back to prevent brake-shoe-related injuries while self propelling.

### The wheelchair can be compactly folded.



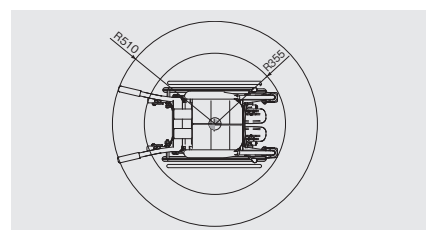
Side View



Front View

\* The spoke cover is an option.

### Minimum Turn Radius 510mm



# Lightweight Stroller for Children Stroller for Children with Posture Support Features

MB Series

MB Series PAT Registered



## Lightweight Stroller



**6.4kg**  
Ultralight!!

Super Light! Folds with One Touch!  
A Very Convenient Stroller for Outings!

Front Seat Height **500 mm**

**MB-PONY** Manufacturer's Suggested Retail Price (Non-Taxable) **¥127,780**

Caster x Rear Wheel [Inches]

**5×5**



Weight  
**6.4kg**

Unit: mm

Product Number	Front Seat Height	Seat Width	Seat Depth	Rear Seat Height	Backrest Height	Footrest Length	Total Height	Total Length	Total Width	Backrest Angle
<b>MB-PONY</b>	<b>500</b>	<b>300</b>	<b>230/260/290</b>	<b>400</b>	<b>560</b>	<b>190~300</b>	<b>900</b>	<b>950</b>	<b>420</b>	<b>90/95/100°</b>

\* Footrest length: distance between the footrests and seat

\* The factory setting of the seat depth is 230mm, and the backrest angle is 95°.

\* The dimensions shown are measured from above the seat frame (pipe) and not from above the cushion.

\* The thickness of the seat cushion is 10mm.

© Specifications are subject to change without prior notice for continual product improvement.

Seat Upholstery Color/N-2  
Frame Color/Pearl White

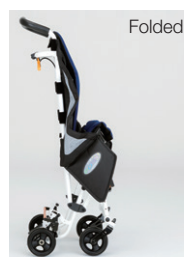


N-1  
(Orange Knit)



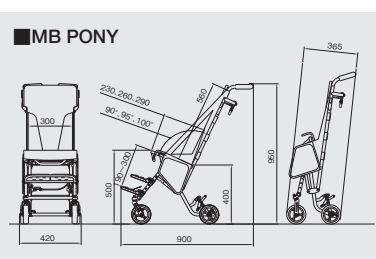
N-2  
(Navy Knit)

Pearl White  
(MATS-022)



Folded

■ MB PONY



### Standard Features

- 3-Point Belt Included
- Adjustable Backrest Angle  
(90° · 95° · 100°)

## Options

### Sunshade



Suggested Retail Price  
(Non-Taxable)

**¥19,800UP**

### Bag



Suggested Retail Price  
(Non-Taxable)

**¥7,920UP**

### Pillow



Suggested Retail Price  
(Non-Taxable)

**¥9,900UP**

## Stroller for Children with Posture Support Features



Front Seat Height **450 mm**

**NEW MB-1** Manufacturer's Suggested Retail Price (Non-Taxable) **¥119,070**

Caster x Rear Wheel [Inches]

**5×5**



Weight  
**7.5kg**

Unit: mm

Product Number	Front Seat Height	Seat Width	Seat Depth	Rear Seat Height	Backrest Height	Footrest Length	Total Height	Total Length	Total Width	Seat Angle
<b>NEW MB-1</b>	<b>450</b>	<b>300</b>	<b>290/310/330</b>	<b>350</b>	<b>615</b>	<b>90~240</b>	<b>995</b>	<b>920</b>	<b>470</b>	<b>90/95/100°</b>

\* Footrest length: distance between the footrests and seat

\* The factory setting of the seat depth is 290mm, and the backrest angle is 95°.

\* The dimensions shown are measured from above the seat frame (pipe) and not from above the cushion.

\* The thickness of the seat cushion is 30mm.

© Specifications are subject to change without prior notice for continual product improvement.

Seat Upholstery Color/M-6



M-2

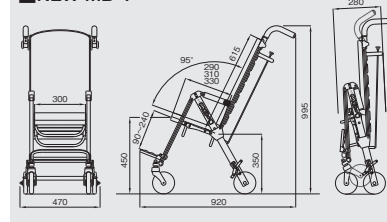


M-3



M-6

■ NEW MB-1



Child

Lightweight Stroller for Children / Stroller for Children with Posture Support Features

# Multi-Position Tilting Stroller PRIO

## Multi-Position Tilting Stroller PRIO

PRIO means "cheerful"



PRIO-1L

Seat Upholstery Color / (M-12)

### Seat Upholstery Color



M-12  
(Navy)



M-13  
(Black)



M-14  
(Wine Red)

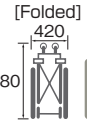
### Frame color



Black metallic  
(MMTS-019)

**PRIO-1S** Manufacturer's Suggested Retail Price (Non-Taxable) **¥168,300**

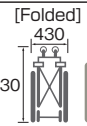
Caster x Rear Wheel [Inches] **4 × 6**



Weight  
**11.0kg**

**PRIO-1L** Manufacturer's Suggested Retail Price (Non-Taxable) **¥168,300**

Caster x Rear Wheel [Inches] **4 × 6**



Weight  
**11.5kg**

### Options

#### Sunshade



Navy



Wine Red

※Black is also available.

Discretionary Price (Non-Taxable) **¥12,000UP**

#### Four-Point Seat Belts



Discretionary Price (Non-Taxable) **¥12,600UP**

### Main Features

Optimal positioning for a variety of physical situations.

Seat depth and foot support length can be adjusted according to growth.

#### Diaper Changing Position



※ The fall prevention bar must be set when changing diapers, in the flat position, and when getting in and out of the car.

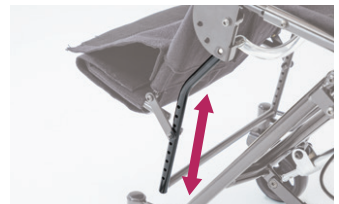
#### Elevating position



#### Seat depth adjustment (5-level)



#### Foot support length adjustment (9-level)



#### Reclining position



#### Tilting position



#### Backrest • Seat Upholstery Adjustment



Backrest and seat upholstery adjustment can be adjusted for better trunk support.

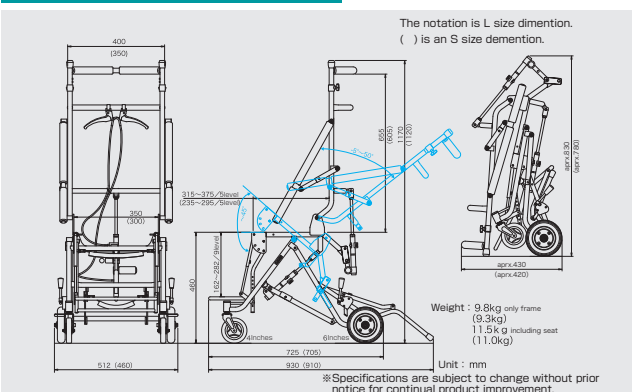
#### Foot Support Angle Adjustment (3-level)



The foot support pipe and foot support work in tandem to reduce leg length mismatch. The seat can also be slackened for use in the flexed position.

### Detailed Diagram of PRIO

Load capacity 40kg



### Dimensions

Size	Seat width	Seat depth	Height
S	300mm	235mm~295mm	85cm~110cm
L	350mm	315mm~375mm	110cm~140cm



## Tilting Stroller Mignon

Lightweight · Compact · Stylish Tilting Stroller with Great Posture Support Features.



Mignon  
Seat Upholstery Color/Rose  
Optional Accessories

Frame Color

Black only

### Mignon S

Manufacturer's Suggested  
Retail Price (Non-Taxable) **¥163,900**

Caster x Rear  
Wheel [Inches] **5×6**

[Folded]  
286  
750

Weight  
**9.4kg**

### Mignon M

Manufacturer's Suggested  
Retail Price (Non-Taxable) **¥163,900**

Caster x Rear  
Wheel [Inches] **5×6**

[Folded]  
288  
778

Weight  
**10.0kg**

### Mignon L

Manufacturer's Suggested  
Retail Price (Non-Taxable) **¥163,900**

Caster x Rear  
Wheel [Inches] **5×6**

[Folded]  
288  
816

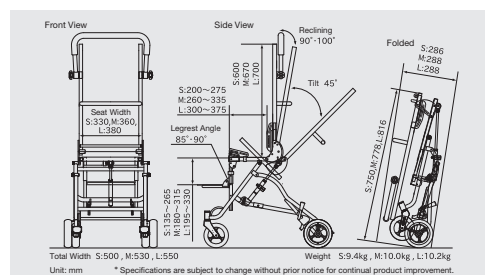
Weight  
**10.2kg**

### Main Features

- 1 The body support unit fits the user seamlessly.
- 2 The new seat structure gently wraps around the user to provide comfortable seating.
- 3 The wheelchair can be compactly folded for convenient transport and storage.

### Detailed Diagram of Mignon

Load Capacity 40kg



### New Comfortable Seat Structure

The seat structure consists of 3 layers: sweat-absorbing and fast-drying material, highly breathable cushion, and 3D mesh. Enjoy comfortable seating at all time with its high breathability and cushioning properties.



### Standard Features



Chest · Pelvic Belt



Core · Pelvic Pad



Lumbar Parts



Anchor Parts

### Options



Sunshade



Headrest



Shoulder Belt



Aspirator Mounting Stand (Foldable)  
Dimension:320×220×50mm, Load Capacity:30kg

### Color Lineup



### Size Chart

Size	Total Width	Total Length	Total Height	Seat Width	Seat Depth	Backrest Height	Footrest Height	Weight	Suitable User Height	Load Capacity
S	500mm	725mm	1,080mm	330mm	200mm~275mm	600mm	135mm~265mm	9.4kg	85cm~110cm	40kg
M	530mm	765mm	1,150mm	360mm	260mm~335mm	670mm	180mm~315mm	10.0kg	95cm~120cm	40kg
L	550mm	765mm	1,180mm	380mm	300mm~375mm	700mm	195mm~330mm	10.2kg	110cm~140cm	40kg

【Adjustable Parts】Adjustable backrest upholstery, position of core · pelvic pad, seat depth, footrest height, reclining angle (0°, 10°), tilt angle (~45° backward incline), legrest angle (85°, 90°), lumbar · anchor adjustment  
 【Folded Dimensions】S:500×286×750mm M:530×288×778mm L:550×288×816mm

## NOTE

---



## Special Features Series





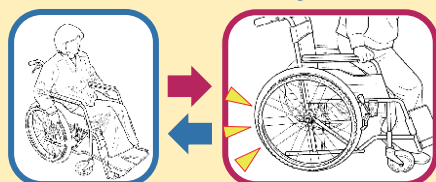
# Wheelchair with Automatic Braking Device

## Auto Break Series

The Auto Break Series are an assistive device which prevents falls by automatically locking the rear wheels of the wheelchair even when the user abruptly stands up without engaging the brake lock. Please make sure to use the parking brake on the wheelchair when transferring on and out of the wheelchair.

### Feature 1

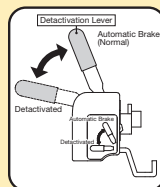
The lock deactivates when sitting down!



The brake activates when standing up!

### Feature 2

The wheelchair can be moved around without a user sitting on it. The automatic braking device can be deactivated using a lever.



### Feature 3

Users can select the plate size.



\* S size will be installed if no preferences are indicated.

## Aluminum Standard Model

Self-Propelled



S-1



S-2



Seat Upholstery Color/S-1

The cushion cover is changed to a vinyl fabric.

Example

Front Seat Height **430 mm**

**AR-201BT**

Manufacturer's Suggested Retail Price (Non-Taxable)

**¥137,940**

Caster x Rear Wheel [Inches] 675 **6×22 (22×13/8)**

[Folded] 410

Weight **18.7kg**

(The cushion is not included in the dimensions.) \* Cushion Thickness with Sensor 50mm

Unit: mm

Product Number	Front Seat Height	Seat Width	Seat Depth	Rear Seat Height	Armrest Height	Backrest Height	Footrest Length	Total Height	Total Length	Total Width
AR-201BT	430	380/400/420	400	400	250	420	360~	900	1,015	670

\* Footrest length: distance between the footrests and seat

\* The dimensions are based on the seat width set at 400mm.

© Specifications are subject to change without prior notice for continual product improvement.

## Aluminum Low-Seat Swing-Away Wheelchair

Self-Propelled



S-1



S-2



Seat Upholstery Color/S-1

The cushion cover is changed to a vinyl fabric.

Example

Front Seat Height **380 mm**

**AR-511BT**

Manufacturer's Suggested Retail Price (Non-Taxable)

**¥155,370**

Caster x Rear Wheel [Inches] 640 **6×22 (22×13/8)**

[Folded] 355

Weight **18.8kg**

(The cushion is not included in the dimensions.) \* Cushion Thickness with Sensor 50mm

Unit: mm

Product Number	Front Seat Height	Seat Width	Seat Depth	Rear Seat Height	Armrest Height	Backrest Height	Footrest Length	Total Height	Total Length	Total Width
AR-511BT	380	380/400/420	380	360	210	430	260~	910	950	680

\* The dimensions are based on the seat width set at 400mm.

\* Footrest length: distance between the footrests and seat

\* The footrest length is set at the shortest possible setting.

\* The weight is that of a wheelchair fitted with plate size S.

© Specifications are subject to change without prior notice for continual product improvement.

## Highly Durable & Safe Aluminum Wheelchair



S-1



S-2

Example

Front Seat Height **430 mm**

**AR-101BT**

Manufacturer's Suggested Retail Price (Non-Taxable)

**¥128,260**

Caster x Rear Wheel [Inches] 675 **6×22 (22×13/8)**

[Folded] 330

Weight **18.6kg**

(The cushion is not included in the dimensions.) \* Cushion Thickness with Sensor 50mm

Example

Front Seat Height **380 mm**

**AR-111BT**

Manufacturer's Suggested Retail Price (Non-Taxable)

**¥128,260**

Caster x Rear Wheel [Inches] 675 **6×22 (22×13/8)**

[Folded] 330

Weight **18.4kg**

(The cushion is not included in the dimensions.) \* Cushion Thickness with Sensor 50mm

Unit: mm

Product Number	Front Seat Height	Seat Width	Seat Depth	Rear Seat Height	Armrest Height	Backrest Height	Footrest Length	Total Height	Total Length	Total Width
AR-101BT	430	400/420	400	400	250	430	360~	890	1,015	675
AR-111BT	380	400/420	380	360	255	430	280~	855	960	675

\* Footrest length: distance between the footrests and seat

\* The dimensions are based on the seat width set at 400mm.

© Specifications are subject to change without prior notice for continual product improvement.

## Extra Low-Seat Wheelchair for Shorter Users to Keep Feet Firmly Planted



E-2

Example

Front Seat Height **370 mm (350) mm**

**MW-SL5BT**

Manufacturer's Suggested Retail Price (Non-Taxable)

**¥255,560**

Caster x Rear Wheel [Inches] 675 **5×20 (20×1)**

[Folded] 410

Weight **16.1kg**

(The cushion is not included in the dimensions.) \* Cushion Thickness with Sensor 50mm

Unit: mm

Product Number	Front Seat Height	Seat Width	Seat Depth	Rear Seat Height	Armrest Height	Backrest Height	Footrest Length	Total Height	Total Length	Total Width
MW-SL5BT	370 (350)	400	380	345/325	235~	450	295~	840	930	625

\* Footrest length: distance between the footrests and seat

© Specifications are subject to change without prior notice for continual product improvement.



\* The above wheelchair is only one example. This device can be fitted onto other wheelchair models. Please don't hesitate to inquire for more information.

3T (Tesla) MRI-Compatible Wheelchair


MRI Series

3T (Tesla) MRI-Compatible Wheelchair

Aluminum



This wheelchair is compatible with 3T (Tesla) MRI.



Front Seat Height **430 mm**

**MR-3T** Manufacturer's Suggested Retail Price (Non-Taxable) **¥159,500**

Caster x Rear Wheel [Inches]  
**6×22 (22×11/4)**

[Folded]  
320

Weight  
13.4kg

Seat Upholstery Color/B-6

Features of the 3T (Tesla) MRI Series

- Non-magnetic aluminum material is used in the main frame. It is safe to use in 3T (Tesla) MRI rooms.



Unit: mm

Product Number	Front Seat Height	Seat Width	Seat Depth	Rear Seat Height	Armrest Height	Backrest Height	Footrest Length	Total Height	Total Length	Total Width
MR-3T	430	400	400	400	235	430	360~	890	1,015	650


\* Footrest length: distance between the footrests and seat  
\* The footrest length is set at the shortest possible setting.  
© Specifications are subject to change without prior notice for continual product improvement.  
**Please note that alterations are unavailable for this model.**

3T (Tesla) MRI-Compatible Ultra High-Spec Wheelchair

Aluminum



This is an ultra high-spec model of 3T (Tesla) MRI wheelchairs.



Front Seat Height **430 mm**

**MR-3TMG** Manufacturer's Suggested Retail Price (Non-Taxable) **¥434,500**

Caster x Rear Wheel [Inches]  
**6×22 (22×1.75)**

[Folded]  
340

Weight  
13.9kg

Seat Upholstery Color/B-38

Features of the Ultra High-Spec 3T (Tesla) MRI Series

- The frame, bolt, nuts and other small parts are made of non-magnetic material. This minimizes the risk of MRI magnetic accidents even in 3T (Tesla) MRI rooms.

Unit: mm

Product Number	Front Seat Height	Seat Width	Seat Depth	Rear Seat Height	Armrest Height	Backrest Height	Footrest Length	Total Height	Total Length	Total Width
MR-3TMG	430	420	400	400	235	435	350	890	1,010	655

\* Footrest length: distance between the footrests and seat  
© Specifications are subject to change without prior notice for continual product improvement.  
**Please note that alterations are unavailable for this model.**

IV Pole for Ultra High-Spec 3T (Tesla) MRI Wheelchair

**MR-IG-3TMG**

(Tax Included) **¥181,500**

Weight  
5.1kg

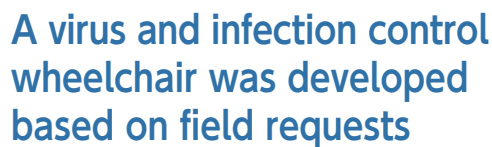
- Frame Material/Aluminum
- Total Width 430 x Total Length 430 x Total Height 1,430~2,370mm
- Percentage of Non-Magnetic Material/100%

\* Stretchers are also available.

Special Features

3T (Tesla) MRI-Compatible Wheelchair

77



~First in the wheelchair industry~  
Equipped with a seat that can be cleaned with alcohol and sodium hypochlorite.

( It is recommended to wipe with water and then dry after cleaning with alcohol or sodium hypochlorite. )

**AR-201B HB-AB** Manufacturer's Suggested Retail Price  
(Non-Taxable) **¥125,840**



**AR-501HB-AB** Manufacturer's Suggested Retail Price  
(Non-Taxable) **¥165,050**

Manufacturer's Suggested Retail Price  
(Non-Taxable) **¥165,050**



**AR-901HB-AB (Self-Propelled)** Manufacturer's Suggested Retail Price  
(Non-Taxable) **¥183,440**

Manufacturer's Suggested Retail Price  
(Non-Taxable) **¥183,440**

**AR-901HB-AB (Attendant-Propelled)** Manufacturer's Suggested Retail Price  
(Non-Taxable) **¥183,440**

Manufacturer's Suggested Retail Price  
(Non-Taxable) **¥183,440**

Product Number	Front Seat Height	Seat Width	Seat Depth	Rear Seat Height	Armrest Height	Backrest Height	Footrest Length	Total Height	Total Length	Total Width	Weight
AR-201B HB-AB	430	400	400	400	250	420	360~	900	1,015	670	15.8kg
AR-501 HB-AB	420	400	400	390	250	375	325~	850	955	625	17.2kg
AR-601 HB-AB	420	400	400	390	250	375	325~	850	945	550	15.8kg
AR-901 HB-AB(Self-Propelled)	420	400	400	390	270~350	400	325~	850	955	610	18.8kg
AR-901 HB-AB(Attendant-Propelled)	420	400	400	390	270~350	400	325~	850	945	560	17.0kg

Unit: mm

**AL-UP-2-AB** Manufacturer's Suggested Retail Price  
(Non-Taxable) **¥435,600**

Manufacturer's Suggested Retail Price  
(Non-Taxable) **¥435,600**

**AL-TUD-2-AB** Manufacturer's Suggested Retail Price  
(Non-Taxable) **¥536.756**

Manufacturer's Suggested Retail Price  
(Non-Taxable) **¥536.756**

Product Number	Mattress Width	Mattress Length	Mattress Height	Total Height	Total Length	Total Width	Weight
<b>AL-UD-2-AB</b>	500	1,790	50	565~945	1,900	590	41.2kg
<b>AL-TUD-2-AB</b>	500	1,760	50	565~945	1,900	590	43.8kg

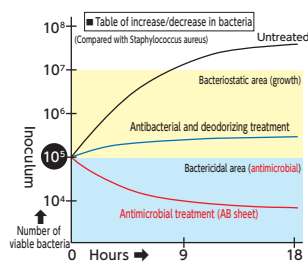
Unit: mm

The sheet fabric is manufactured by the Japan Textile Evaluation and Technology Institute, Inc. The seat fabric conforms to the SEK Mark certification standards of the Japan Textile Evaluation Technology Council and is a material that has acquired a certification number for antimicrobial processing (orange label).



\* The antimicrobial agent used is "COKINMASTERTM" by IDEFATEX, JAPAN Co.

### Difference between antimicrobial treatment and antibacterial/odor control treatment



Number of effective bacteria	More than 300 species Effective against a wide range of bacteria, mold, and algae
Water solubility	Insoluble to sparingly soluble
Heat resistance	220°C

\*Effective bacteria were researched by IDEATEX JAPAN.  
\*Excluding products for infants under 24 months of age.

antimicrobial treatment

vs Antibacterial and deodorizing treatment

\*Antimicrobial" means to inhibit the growth of bacteria on fibers

Antimicrobial\* means inhibiting the growth of microorganisms

Staphylococcus aureus, Klebsiella pneumoniae causing pneumonia, Pseudomonas aeruginosa causing bedsores, Escherichia coli causing cystitis, and MRSA causing nosocomial infections are the bacteria to be tested.

Staphylococcus aureus, which causes acne, is the tested organism.

Different target  
germs

The inhibition effect of bacteria growth differs

■ Refer to the table of increase/decrease of bacteria

Bacteria should not increase. However, depending on the application, the same may be approved.

Bacteria may increase but must exceed the standard for odor control.

### Durability of antimicrobial performance

Certain applications require durability to withstand 5 cycles of industrial laundering at 80°C (140°F).

Fabrics need to withstand 5 cycles of home laundering at 40°C (104°F).

## Safety

Uses antimicrobial agents with excellent safety  
Non-formalin and suitable for people.

The basis is non-formalin.



## Morph MR Morph

GOOD DESIGN AWARD 2016  
**GOLD AWARD**



**MOR-01** Self-Propelled

**MOR-01** Attendant-Propelled



**MR-MOR**

### Seat Upholstery Colors



White Black The rising sun

\* Orange is only available color for MR Morph.

### Morph

Front Seat Height **475 mm**

**MOR-01**

Manufacturer's Suggested Retail Price  
(Non-Taxable) **¥520,300**

### MR Morph

Front Seat Height **470 mm**

**MR-MOR**

Manufacturer's Suggested Retail Price  
(Non-Taxable) **¥363,000**

Product Number		Caster (inches)	Large wheel(inches)	Front Seat Height(mm)	Rear Seat Height(mm)	Seat Width(mm)	Armrest Height(mm)	Backrest Height(mm)	Footrest Length(mm)	Total Length(mm)	Total Height(mm)	Total Width(mm)	Weight(kg)	Load Capacity(kg)
MOR-01	Self-Propelled	4	22	475	410	400	220	450	350	910	910	650	28.5	100
	Attendant-Propelled	4	4	470	400	400		450	350	930	890	424	16.0	100
MR-MOR		4	4	470	400	400	220	450	350	930	890	530	17.9	100

~From the airport counter to on board the plane~  
Walk-through gate does not respond "Morph"



### ◆No metal is used

No metal is used in our wheelchair "Morph", in the frame, the seat, or even the wheels. A user of a conventional wheelchair made of metal would have to undergo a pat-down at the walk-through gate even when they do not have any metal objects. "Morph", in contrast, allows the wheelchair user to go through the walk-through gate as other passengers do without metal detection.

## Further Development of Non-Metallic Technology Safety Measures in MRI Rooms MR Morph

### [CONCEPT]

The wheelchair itself does not react to metal detectors or magnetic detectors, making it easy to check wheelchair users' personal belongings for metals or magnetic substances before they enter the MRI room. Preventing the introduction of magnetic objects also reduces the time and risk of re-inspection due to image distortion.

### [POINT]

The large wheel unit of the conventional Morph has been removed and an armrest has been added. This is a simplified model of Morph that ensures safety while reducing costs. The bearing is made of ceramics. The bearings are made of ceramics for smooth running in hospitals.

\* Not for normal use in hospital wards.

### ◆Detachable large wheels

When using a wheelchair without detachable large wheels, the wheelchair user needs to change to a special small wheelchair for use on board. "Morph" however, has large wheels which are detachable while the wheelchair user sits on the seat, eliminating the need to change wheelchairs.

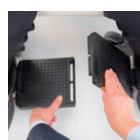
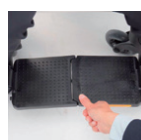


Airport counter → Security check → Walk-through gate → Boarding gate → On board  
No need to change wheelchairs



### ◆Parking brake

Two types of parking brakes are provided, one for use by the wheelchair user when he/she operates the wheelchair, and the other for use by a helper when the large wheel unit is detached on board the plane. The brake for the wheelchair user can be operated with less force than conventional wheelchairs due to a gear with a new type of structure.



### ◆The folding function of the foot support

Foot supports allows the wheelchair user to safely transfer into/out of the wheelchair. Coupling the right and left parts greatly increases rigidity of the foot supports.

# One-Arm Drive Wheelchair Front large wheel wheelchair

## SCULL type1

Aluminum



Seat Upholstery Color / M-4  
Frame Color / Pastel Orange



M-4

Front Seat Height **470 mm**

**OH-1**

Manufacturer's Suggested Retail Price  
(Non-Taxable)

**¥239,580**

Caster x Rear Wheel [Inches]  
**6 × 22 (22 × 1)**

[Folded]



Weight  
**16.3kg**

### Features of One-Arm Drive Scull

- Shift the lever in the direction the user wishes to advance to move back & forth or left & right.
- The wheelchair can be operated for short periods of training.
- To engage the brake while operating the wheelchair, shift the level in the direction opposite of the direction the user is advancing. The parking brake on both rear wheels can also be engaged using one hand.

Unit: mm

Product Number	Front Seat Height	Seat Width	Seat Depth	Rear Seat Height	Armrest Height	Backrest Height	Footrest Length	Total Height	Total Length	Total Width
<b>OH-1</b>	<b>470</b>	<b>380/400/420</b>	<b>400</b>	450	240	435	325~	965	1,030	620

\* Footrest length: distance between the footrests and seat

\* The dimensions are based on the seat width set at 400mm.

\* The seat cushion thickness is not included in the dimensions. The seat cushion is 40mm thick.

© Specifications are subject to change without prior notice for continual product improvement.

## Double Handrim Wheelchair Features

Aluminum



Seat Upholstery Color / S-2



S-1

S-2

Front Seat Height **430 mm**

**AR-201W**

Manufacturer's Suggested Retail Price  
(Non-Taxable)

**¥137,500**

Caster x Rear Wheel [Inches]  
**6 × 22 (22 × 13/8)**

[Folded]



Weight  
**17.3kg**

### Features of Double Handrim Wheelchair

- Designed for users with paralysis who need to operate a wheelchair with only one hand, it allows wheelchair operation using two hand rims attached to one side of the wheelchair. A brake extension bar is standard on the non-operated side, facilitating easier braking on the opposite side.

Unit: mm

Product Number	Front Seat Height	Seat Width	Seat Depth	Rear Seat Height	Armrest Height	Backrest Height	Footrest Length	Total Height	Total Length	Total Width
<b>AR-201W</b>	<b>430</b>	<b>380/400/420</b>	<b>400</b>	400	250	420	300~	900	1,015	685

※ 685mm is the total width when the seat width is 400mm.

## Front Large Wheel Wheelchair

Steel



Seat Upholstery Color / B-37



B-37

B-14

B-15

Front Seat Height **470 mm**

**ST-2**

Manufacturer's Suggested Retail Price  
(Non-Taxable)

**¥106,000**

Caster x Rear Wheel [Inches]  
**7 × 24 (24 × 13/8)**

[Folded]



Weight  
**18.5kg**

### Features of ST-2

- This is a forward large-wheel wheelchair with large wheels in the front and casters in the rear.
- Because the handrims are in front, it may be easier to maneuver for people with limited shoulder range of motion or with a round back.

Unit: mm

Product Number	Front Seat Height	Seat Width	Seat Depth	Rear Seat Height	Armrest Height	Backrest Height	Footrest Length	Total Height	Total Length	Total Width
<b>ST-2</b>	<b>470</b>	<b>380/400/420</b>	<b>400</b>	440	245	400	310	890	1,060	600

\* Footrest length: distance between the footrests and seat

\* The footrest length is set at the shortest possible setting.

\* The dimensions are based on the seat width set at 400mm.

© Specifications are subject to change without prior notice for continual product improvement.