

Wheeled Stretcher & Stretcher



Aluminum Lightweight Wheeled Stretcher

Lightweight Wheeled Stretcher (High-Low Model)



Crank
Handle
Height
Adjustable

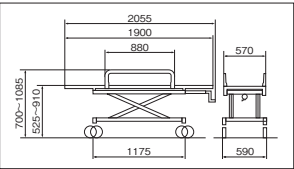
Fixed
Stretcher

Easy to operate for all users.

AL-UD-1 (4-Wheel Double Lock Model)

(Tax Included) ¥300,080

- Material/Aluminum
- Dimension/Total Width 590 x Total Length 1,900 x Total Height 525~910mm
- Casters/φ150mm Double Lock
- Weight/40.2kg
- Method of Height Adjustment/Crank Handle
- Standard Features/Mattress, Irrigator Stand
- Mattress Dimensions/Total Width 500 x Total Length 1,690 x Total Height 50mm



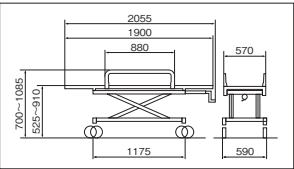
Crank
Handle
Height
Adjustable

Fixed
Stretcher

AL-TUD-1 (Total Lock Model)

(Tax Included) ¥392,040

- Material/Aluminum
- Dimension/Total Width 590 x Total Length 1,900 x Total Height 525~910mm
- Casters/φ150mm Total Lock U-Shaped Model
- Weight/42.8kg
- Method of Height Adjustment/Crank Handle
- Standard Features/Mattress, Irrigator Stand
- Mattress Dimensions/Total Width 500 x Total Length 1,690 x Total Height 50mm



Crank
Handle
Height
Adjustable

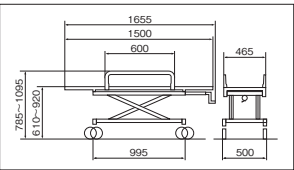
Fixed
Stretcher

* Pediatric Model of AL-UD-1

AL-UD-1S (4-Wheel Double Lock Model - Pediatric)

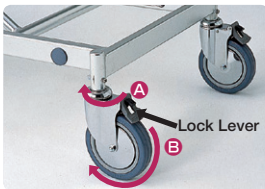
(Tax Included) ¥371,470

- Material/Aluminum
- Dimension/Total Width 500 x Total Length 1,500 x Total Height 610~920mm
- Casters/φ150mm Double Lock
- Weight/34.0kg
- Method of Height Adjustment/Crank Handle
- Standard Features/Mattress, Irrigator Stand
- Mattress Dimensions/Total Width 390 x Total Length 1,300 x Total Height 50mm



What are double lock casters • total lock casters?

Double Lock Casters



Standard
φ150mm

Lowering the lock lever simultaneously locks swivel movement **A** and rotational movement **B** of the casters.

Total Lock U-Shaped Model



Standard
φ150mm

The following 2 locking patterns are engaged by raising and lowering the lock lever.

- ① Simultaneously locks movements **A** and **B** for all 4 wheels.
 - ② Locks movement **A** of only 1 caster.
- This stretcher is useful for transporting patients in straight lines over long distances, e.g. in hospital hallways.

Standard Feature
Irrigator Stand Set



Lightweight Wheeled Stretcher (High-Low Model - Raising Backrest)



Crank
Handle
Height
Adjustable

Fixed
Stretcher

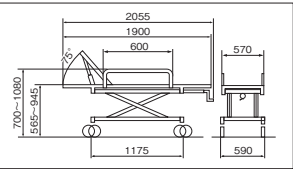
8-Level
Backrest
Adjustable
Mechanism
Included

A Lightweight and Reliable
Wheeled Stretcher.

AL-UD-2 (4-Wheel Double Lock Model)

(Tax Included) ¥338,800

- Material/Aluminum
- Dimension/Total Width 590 x Total Length 1,900 x Total Height 565~945mm
- Casters/φ150mm Double Lock
- Weight/41.2kg
- Method of Height Adjustment/Crank Handle, Raising Backrest with Pin Style Jack
- Standard Features/Mattress, Irrigator Stand
- Mattress Dimensions/Total Width 500 x Total Length 1,760 x Total Height 50mm



Crank
Handle
Height
Adjustable

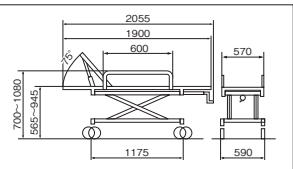
Fixed
Stretcher

8-Level
Backrest
Adjustable
Mechanism
Included

AL-TUD-2 (Total Lock Model)

(Tax Included) ¥430,760

- Material/Aluminum
- Dimension/Total Width 590 x Total Length 1,900 x Total Height 565~945mm
- Casters/φ150mm Total Lock U-Shaped Model
- Weight/43.8kg
- Method of Height Adjustment/Crank Handle, Raising Backrest with Pin Style Jack
- Standard Features/Mattress, Irrigator Stand
- Mattress Dimensions/Total Width 500 x Total Length 1,760 x Total Height 50mm



Lightweight Wheeled Stretcher (High-Low Model - Removable Stretcher)



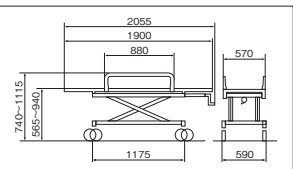
Crank
Handle
Height
Adjustable

Removable
Stretcher

AL-UD-3 (4-Wheel Double Lock Model)

(Tax Included) ¥319,440

- Material/Aluminum
- Dimension/Total Width 590 x Total Length 1,900 x Total Height 565~940mm
- Casters/φ150mm Double Lock
- Weight/43.6kg
- Method of Height Adjustment/Crank Handle, Stretcher Lever Lock
- Standard Features/Mattress, Irrigator Stand
- Mattress Dimensions/Total Width 500 x Total Length 1,690 x Total Height 50mm



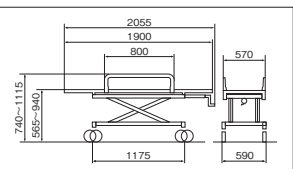
Crank
Handle
Height
Adjustable

Removable
Stretcher

AL-TUD-3 (Total Lock Model)

(Tax Included) ¥411,400

- Material/Aluminum
- Dimension/Total Width 590 x Total Length 1,900 x Total Height 565~940mm
- Casters/φ150mm Total Lock U-Shaped Model
- Weight/46.2kg
- Method of Height Adjustment/Crank Handle, Stretcher Lever Lock
- Standard Features/Mattress, Irrigator Stand
- Mattress Dimensions/Total Width 500 x Total Length 1,690 x Total Height 50mm



Aluminum Lightweight Wheeled Stretcher

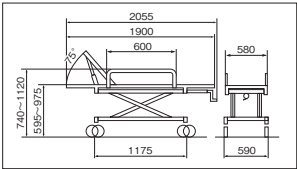
Lightweight Wheeled Stretchers (High-Low Model - Raising Backrest - Removable Stretcher)



- Crank Handle Height Adjustable
- Removable Stretcher
- 8-Level Backrest Adjustable Mechanism Included

AL-UD-4 (4-Wheel Double Lock Model) (Tax Included) ¥358,160

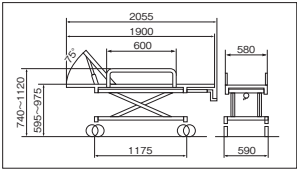
- Material/Aluminum
- Dimension/Total Width 590 x Total Length 1,900 x Total Height 595~975mm
- Casters/φ150mm Double Lock
- Weight/44.6kg
- Method of Height Adjustment/Crank Handle, Stretcher Lever Lock
- Standard Features/Mattress, Irrigator Stand
- Mattress Dimensions/Total Width 500 x Total Length 1,760 x Total Height 50mm



- Crank Handle Height Adjustable
- Removable Stretcher
- 8-Level Backrest Adjustable Mechanism Included

AL-TUD-4 (Total Lock Model) (Tax Included) ¥450,120

- Material/Aluminum
- Dimension/Total Width 590 x Total Length 1,900 x Total Height 595~975mm
- Casters/φ150mm Total Lock U-Shaped Model
- Weight/47.2kg
- Method of Height Adjustment/Crank Handle, Stretcher Lever Lock
- Standard Features/Mattress, Irrigator Stand
- Mattress Dimensions/Total Width 500 x Total Length 1,760 x Total Height 50mm



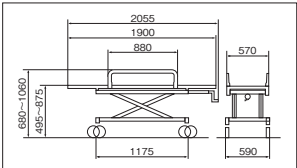
Lightweight Wheeled Stretcher (for Showers)



- Crank Handle Height Adjustable
- Fixed Stretcher

AL-SUD (4-Wheel Double Lock Model - for Showers) (Tax Included) ¥338,800

- Material/Aluminum
- Dimension/Total Width 590 x Total Length 1,900 x Total Height 495~875mm
- Casters/φ125mm Double Lock
- Weight/37.6kg
- Method of Height Adjustment/Crank Handle
- Standard Features/Polyethylene Foam, Irrigator Stand
- Mattress Dimensions/Total Width 490 x Total Length 1,700 x Total Height 30mm



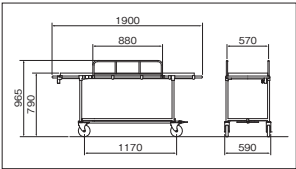
Other Aluminum General-Purpose Models



- Fixed Stretcher

AL-D (4-Wheel Double Lock Model) (Tax Included) ¥139,150

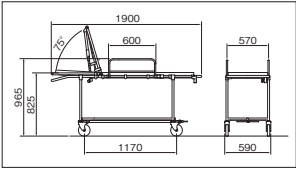
- Material/Aluminum
- Dimension/Total Width 590 x Total Length 1,900 x Total Height 790mm
- Casters/φ150mm Double Lock
- Weight/26.9kg
- Standard Features/Mattress, Irrigator Stand
- Mattress Dimensions/Total Width 500 x Total Length 1,690 x Total Height 50mm



- Fixed Stretcher
- 8-Level Backrest Adjustable Mechanism Included

AL-B (4-Wheel Double Lock Model - Backrest Adjustable Mechanism Included) (Tax Included) ¥179,080

- Material/Aluminum
- Dimension/Total Width 590 x Total Length 1,900 x Total Height 825mm
- Casters/φ150mm Double Lock
- Weight/27.9kg
- Method of Backrest Adjustment/Raising Backrest with Pin Style Jack
- Standard Features/Mattress, Irrigator Stand
- Mattress Dimensions/Total Width 500 x Total Length 1,760 x Total Height 50mm



Compact Wheeled Stretcher

- Fixed Stretcher
- A Compact Wheeled Stretcher Taking Up Minimal Storage Space



Foldable Stretcher (Tax Included) ¥206,910

- Material/Aluminum
- Dimension/Total Width 585 x Total Length 1,900 x Total Height 785mm
- Folded Dimension/Total Width 585 x Total Length 420 x Total Height 1,195mm
- Casters/φ150mm Double Lock
- Weight/25.9kg
- Standard Features/Mattress, Irrigator Stand

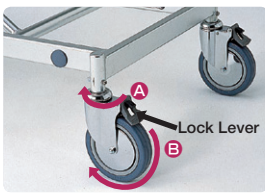


* Folded

* The lock uses a safety lock mechanism to prioritize safety. It can be easily folded.

What are double lock casters • total lock casters?

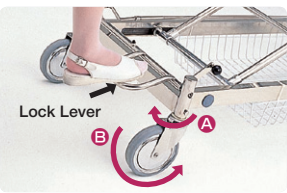
Double Lock Casters



Standard φ150mm

Lowering the lock lever simultaneously locks swivel movement (A) and rotational movement (B) of the casters.

Total Lock U-Shaped Model



Standard φ150mm

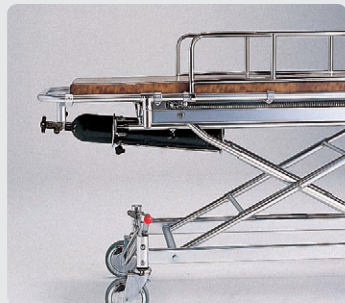
The following 2 locking patterns are engaged by raising and lowering the lock lever.
① Simultaneously locks movements (A) and (B) for all 4 wheels.
② Locks movement (A) of only 1 caster. This stretcher is useful for transporting patients in straight lines over long distances, e.g. in hospital hallways.

Standard Feature Irrigator Stand Set



Common Options for Wheeled Stretchers * Unavailable for SUD • MRI Series (Except Fixation Strap for Stretchers)

Oxygen Tank Holder



For 500cc Oxygen Tanks
* The photo is a model for AL-UD • TUD. Oxygen tank holders for attachment onto other types of wheeled stretchers require alterations to the main body.

Basket



Total Width 450 x Total Length 700 x Total Height 100 mm
Surface coated

Fixation Strap for Wheeled Stretchers



L 1,900 x W 70 mm

MRI-Compatible Wheeled Stretcher

3 Tesla MRI-Compatible Wheeled Stretcher



Seat Color/B-6

Crank
Handle
Height
Adjustable

Fixed
Stretcher

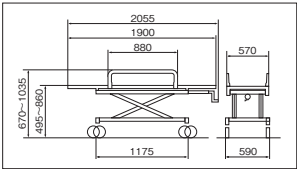
Non-magnetic aluminum material is used in the main frame.
It is safe to use in 3 Tesla MRI rooms.

MR-UD-3T (4-Wheel Double Lock Model)

(Tax Included) ¥453,200

- Material/Aluminum
- Dimension/Total Width 590 x Total Length 1,900 x Total Height 495~860mm
- Casters/φ125mm Double Lock, Stainless
- Weight/41.3kg
- Method of Height Adjustment/Crank Handle
- Standard Features/Mattress, Irrigator Stand
- Mattress Dimensions/Total Width 500 x Total Length 1,690 x Total Height 50mm

Please note that alterations are unavailable for this model.



Ultra-High Spec 3 Tesla MRI-Compatible Wheeled Stretcher



Seat Color/B-38

Crank
Handle
Height
Adjustable

Fixed
Stretcher

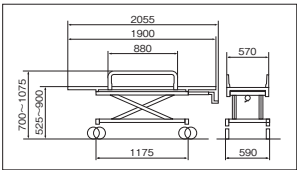
The frame, bolt, nuts and other detailed parts are made of non-magnetic material. This minimizes the risk of disturbances to MRI images even within 3 Tesla MRI rooms.

MR-UD-3TMG (4-Wheel Double Lock Model)

(Tax Included) ¥968,000

- Material/Aluminum
- Dimension/Total Width 590 x Total Length 1,900 x Total Height 525~900mm
- Casters/φ150mm Double Lock, Made of Resin
- Weight/39.1kg
- Method of Height Adjustment/Crank Handle
- Standard Features/Mattress, Irrigator Stand
- Mattress Dimensions/Total Width 500 x Total Length 1,690 x Total Height 50mm

Please note that alterations are unavailable for this model.



MR-3T

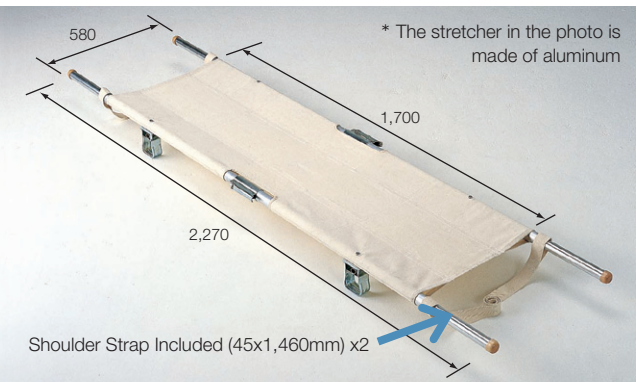
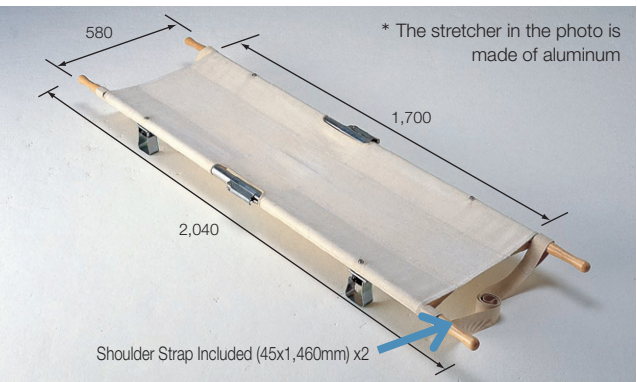
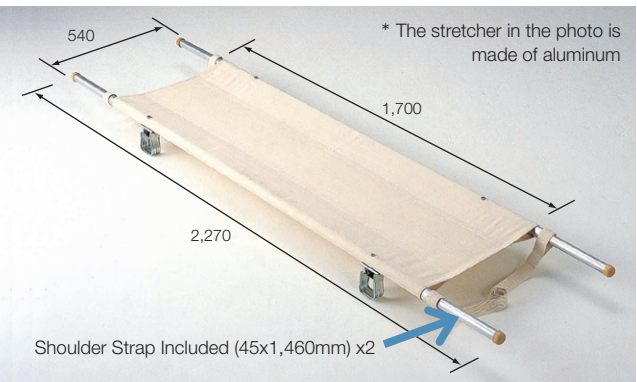
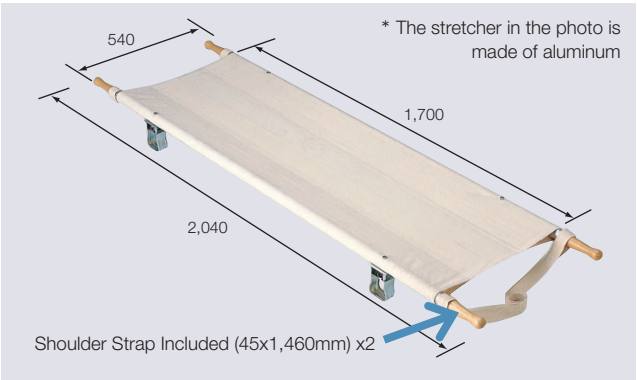


MR-3TMG

* Wheelchairs are also available.

Stretcher

Pole Stretcher





Color/#C-3

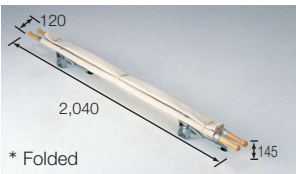
Storage Bag for 2-Fold Stretchers	
Discretionary Price	200
Storage Bag for 4-Fold Stretchers	
Discretionary Price	370

* The stretcher in the photo is the 4-fold model.

2-Fold Stretcher with Legs (Fixed Handles) Made of Steel (Tax Included) ¥15,125

Made of Aluminium (Tax Included) ¥26,620

Specifications	Steel	Aluminum
Dimensions	Total Width 540 x Total Length 2,040mm	
Weight	7.0kg	5.4kg

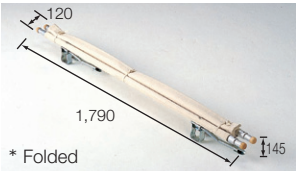


The most economical option out of our selection of standard stretchers.

2-Fold Stretcher with Legs (Retractable Handles) Made of Steel (Tax Included) ¥22,385

Made of Aluminium (Tax Included) ¥29,040

Specifications	Steel	Aluminum
Dimensions	Total Width 540 x Total Length 2,270mm Rolled Up Total Length 1,790mm	
Weight	8.5kg	6.4kg

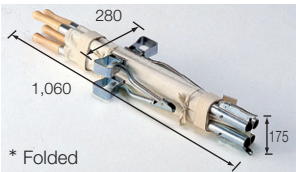


The handles are retractable for use in narrow spaces and inside elevators.

4-Fold Stretcher with Legs (Fixed Handles) Made of Steel (Tax Included) ¥25,410

Made of Aluminium (Tax Included) ¥30,250

Specifications	Steel	Aluminum
Dimensions	Total Width 580 x Total Length 2,040mm 4-Fold Total Length 1,060mm	
Weight	8.1kg	6.5kg

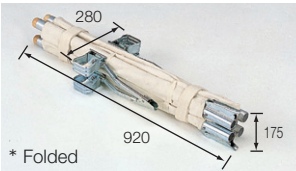


The stretcher can be compactly folded into 4.

4-Fold Stretcher with Legs (Retractable Handles) Made of Steel (Tax Included) ¥27,830

Made of Aluminium (Tax Included) ¥32,670

Specifications	Steel	Aluminum
Dimensions	Total Width 580 x Total Length 2,270mm Rolled Up Total Length 1,790mm 4-Fold Total Length 920mm	
Weight	9.6kg	7.5kg



The handles are retractable and easy to grab.

Options

● **Stretchers**

- 2-Fold Stretcher with Legs & Fixed Handles
- 2-Fold Stretcher with Legs & Retractable Handles
- 4-Fold Stretcher with Legs & Fixed Handles
- 4-Fold Stretcher with Legs & Retractable Handles

● **Seat**

Tarpaulin

+¥4,400 (Tax Included)

● **Seat**

Made of Vinyl Coating

+¥2,200 (Tax Included)

● **Casters**

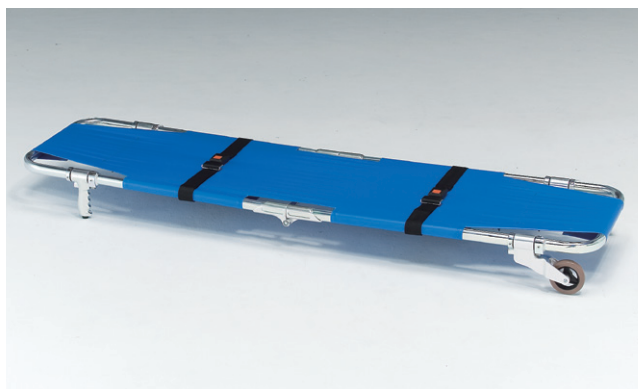
They can be attached to one side of the stretcher for smooth operation.

+¥6,600 (Tax Included)

● **Seat**

Dark Green Waterproof Canvas

+¥2,200 (Tax Included)



A Model Stretcher 1

Aluminum (Tax Included) **¥94,380**

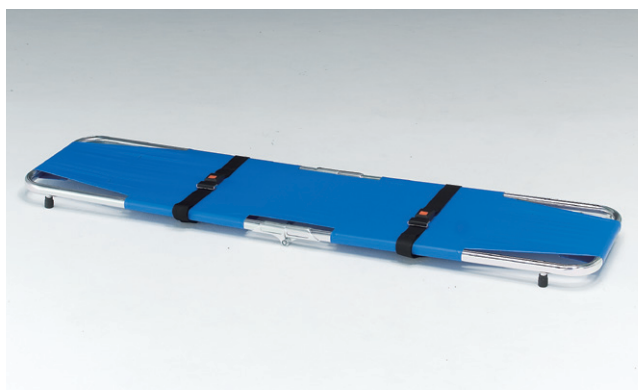
Specification	Aluminum
Dimension	Total Width 515 x Total Length 1,900 x Total Height 215mm Folded Total Length 960mm
Weight	8.0kg



* Folded

Casters are attached on one side of the stretcher to be carried by 1 person.

It can be transported by one person. The post crutch and casters are retractable with one-touch. The stretcher can be compactly folded for storage.



A Model Stretcher 2

Aluminum (Tax Included) **¥78,650**

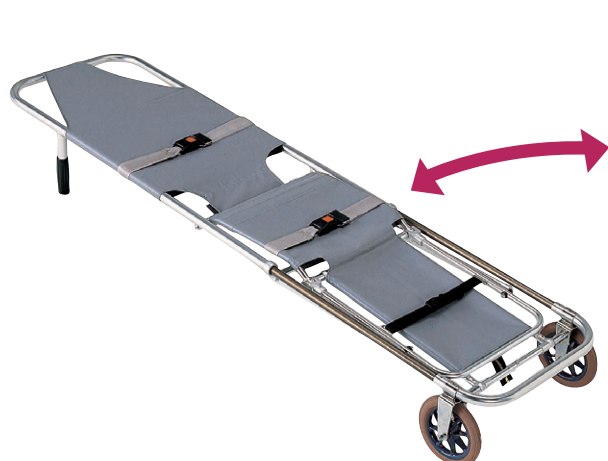
Specification	Aluminum
Dimension	Total Width 490 x Total Length 1,900 x Total Height 60mm Folded Total Length 960mm
Weight	5.0kg



* Folded

It can be folded in half for storage.

It is lightweight and can be compactly stored. It can be taken on outdoor activities.



* Chair Mode

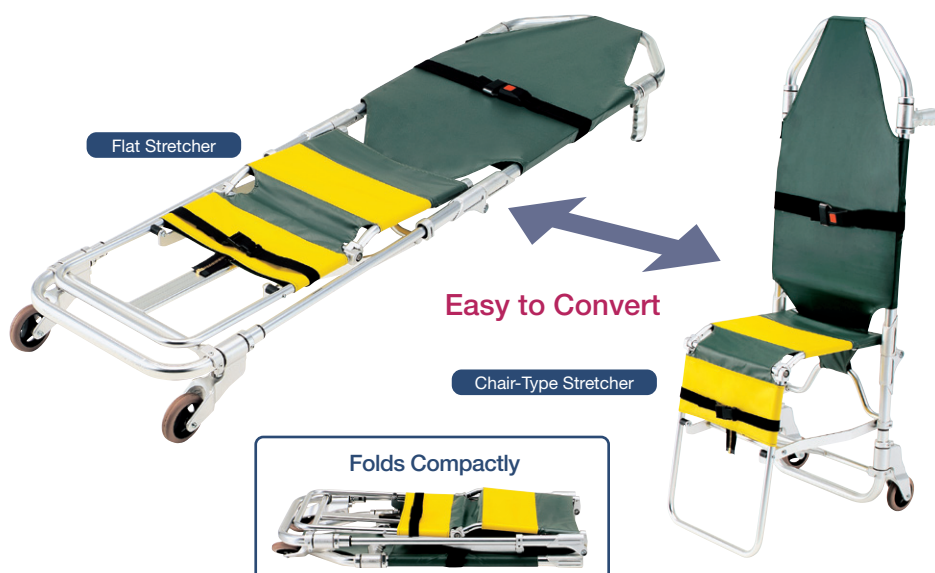
Chair-Type Stretcher

Aluminum (Tax Included) **¥118,580**

Specification	Aluminum
Dimension	Total Width 550 x Total Length 1,925 x Total Height 255mm Chair Mode : Total Width 550 x Total Length 650 x Total Height 1,395mm
Weight	About 8.5kg

A cart/stretcher which can be transported by one person.

One person can easily carry this stretcher.



Flat Stretcher

Easy to Convert

Chair-Type Stretcher

Folds Compactly

Assist Stretcher

Aluminum (Tax Included) **¥166,980**

Specification	Aluminum		
	Flat Stretcher Mode	Chair Mode	Folded
Total Length	1,865mm	660mm	985mm
Total Width	520mm		505mm
Total Height	195mm	1,360mm	140mm
Seat to Floor Height	—	520mm	—
Backrest Height	850mm		—
Weight	9.5kg		
Maximum Load Capacity	120kg		—

The Ultimate Multi-Purpose Stretcher!!