



SIMPLE for optimal use in your life

Matsunaga's design is a simple one but very effective for optimal use, this allows you to live life the best way possible. Simple design allows YOU to grow

Si:D

"Matsunaga" brand (SEED: seed), which is new to UK and Europe with fans of "Matsunaga" The plant "seeds" sown by using water and fertilizer to sprout, Bloom flowers and create new "seed". I want to create like this good cycle in this market with YOU.



Option : Spinerly L x L Black

COLOUR SPROUT GREEN



Powder Coating

“美” FRAME

Both sides from footrest area to top of frame are built without welding which makes the frame lighter and durable. Matsunaga call it “美” (Bi) FRAME. “美” means beauty

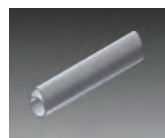
30mm main frame



Stability

MP original pipe, Minamo, is both rigid and light. Si:D has adopted it on the important parts for driving due to enhance strength and rigidity, which wheeling can be comfortable.

Option : 5" Soft roll · Spinerly LxL Black



MINAMO
© Gifu Prefecture

Global HP



SPECIFICATION



Seat Width
300mm ~ 420mm
10mm increments



Front Seat Height
400mm ~ 550mm
10mm increments



Back Rest Height
240mm ~ 380mm
10mm increments



Seat Depth
340mm ~ 420mm
10mm increments



Rear Seat Height
380mm ~ 500mm
10mm increments



Frame Length
520mm / 560mm / 600mm



Camber
0° / 2°



Maximum weight allowed
100kg



Axle Position
30mm ~ 120mm
10mm increments

Individual purchase order form available for detailed specification and options, please make sure the individual purchase order form.

Specifications may change due to product improvement or quality improvement



MATSUNAGA

FRAME COLOUR

※ It differs from the actual colour due to printing on paper.
* Standard colour



MP Blue *



MP White *



MP Black *



Fine Texture Black

Rough texture



Matt Blue



Matt White



Matt Black



Matt Silver



Anodized Blue



Anodized Black



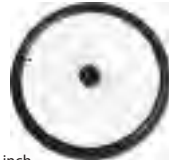
Anodized Grey



Anodized Silver

WHEEL OPTION

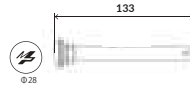
Standard wheel



inch

24/25 Lenco Standard Wheel

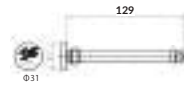
Matsunaga adopts wire spoke wheel as standard, not needed extra fee.
Spoke colour: Silver
colour : Black



inch

24/25 Spinergy LXL

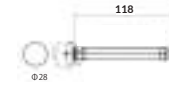
PBO fiber makes chair lightest performance. It delivers 3 times strength of stainless steel. It has excellent quality of vibration absorption.



inch

24 Carbon FIN

Matsunaga original carbon wheel dynamically optimized design arrangement of the carbon fiber structure with wall sickness to accommodate sporty and lightness.



25inch Spinergy LxL Black / Sprout green / 5 inch Soft roll

TYRE OPTIONS

EXERCER



Standard tyre



EXCERACER is a product brand of Inoue Rubber Co., Ltd.. Made in Japan.
Black and Grey colour is both 25-540 (24inch) and 25-559 (25 inch)
Blue, Yellow, Red is only 24 inch.

<https://ircbike.jp/product-list-cat/wc/>



si:d



CASTER OPTION

4 caster rolls

- | | * Standard inch |
|---------------|-----------------|
| 1. Soft Roll | 4/5 |
| 2. PUW * | 4/5 |
| 3. GRC Roll * | 5 |
| 4. Lightning | 4 |



CASTER FORK COLOUR

C-fork is assembled 3 pieces of parts.

- Anodized Gold
- Anodized Silver
- Anodized Brown
- Anodized Purple
- Anodized Blue
- Anodized Grey
- Anodized Black *
- Anodized Red



* Standard colour

FOLLOW US

matsunaga.wheelchair.europe

Instagram



3D Colouring Simulator

Click Here



Visualising
your preference
Before choosing
body colour

Si:D



■ Zoom in/out

■ Rotate



You can click
different colour

